

# World's Most Advanced Wire EDM Programming CAMWorks

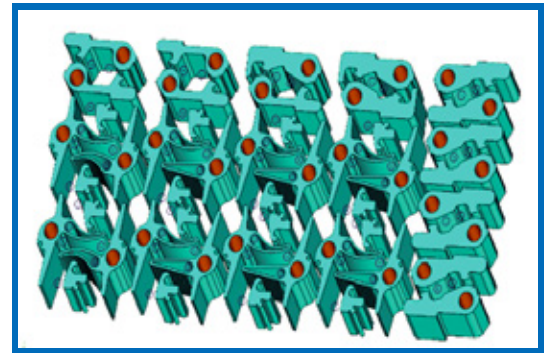


## Solid to G-Code in ONE Click

Take your Wire EDM programming to the next level with CAMWorks Wire EDM Pro - increasing efficiency and reducing delivery times.

With CAMWorks Wire EDM Pro you can go from solid model to G-Code in ONE Click! Once the solid model is opened, the user clicks on the Solid to G-Code button and the system automatically...

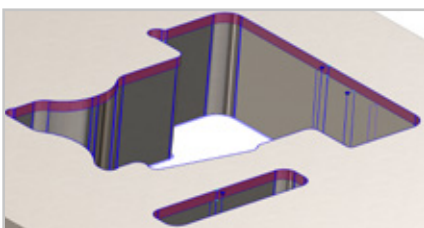
- Searches the part for machine-able features
- Identifies the features
- Generates all the operations
- Includes users' preferences and settings
  - tool offsets
  - cutting conditions
  - start holes
- Creates the toolpaths
- Posts the G-code



CAMWorks Wire EDM Pro includes automatic programming for complex 2-axis, 2-axis with taper and full 4-axis wire EDM machining.

*"In my role as CAD/CAM Manager at GF Machining Solutions, I am responsible to support CAM brands for developing post processors for our machine types. CAMWorks Wire EDM Pro has post processors that are working perfectly for all of our existing wire cutting EDM machines (Agie Vision, HMI for the machine series CUT P, CUT E, CUT C and UNIQUA for the machine series CUT P Pro)."*

Simon Heinz, EDM CAD/CAM Manager,  
GF Machining Solutions



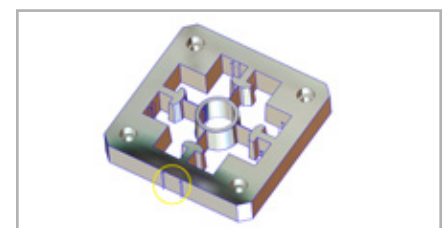
### Automatic Land and Taper Detection & Programming

Feature recognition detects land & taper on 3D models or computes land & taper on 2 axis features and automatically generates toolpaths for machining.



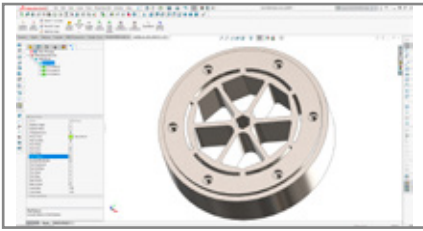
### Improved Cutting Conditions for EDM Machining

OEM cutting conditions and offsets are auto-selected, user-adjustable if required, and are output directly to the G-code program.



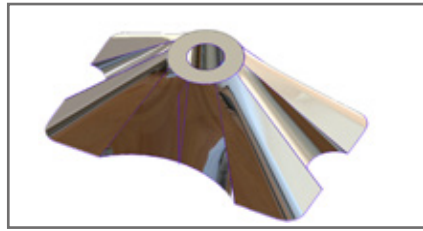
### Automatic Calculation of Glue Stop Size and Location

Automatic size and placement based on user inputs and slug size. Users can also interactively adjust and configure to create custom glue stops, as required.



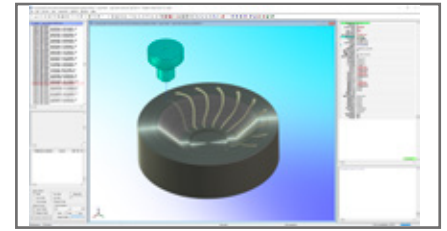
### Support of Sub-Programs and SOLIDWORKS Patterns

Automatically identifies SOLIDWORKS patterns, applies machining strategies, and leverages sub-programs to efficiently machine the patterned features.



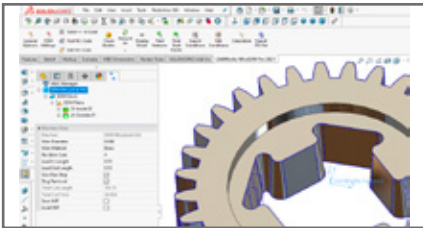
### Automatic Programming of Complex 4-Axis Parts

Feature recognition and automatic programming of even the most complex 4-axis parts at the push of a button, with user-defined machining strategies!



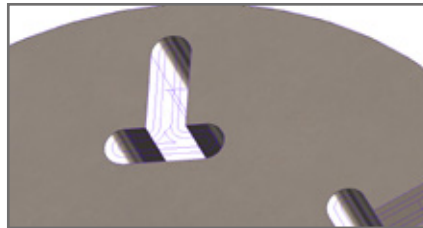
### True G-code Virtual Wire EDM Simulation

Integrated true G-code virtual simulation with user configurable wire guides, and animation -time & quality settings. Deep zoom allows closer look at small features in high resolution, for precise control.



### Detailed Machine Settings Based on Machine Selection

Applies the correct power settings, cutting conditions, and machine parameters automatically based on the machine selected by the user.



### 2 Axis Coreless Pocketing

2 Axis no-core roughing can remove material in virtually any shape to eliminate slugs, large remnants, and glue stops when machining pockets.



### Automatic Start Hole Selection

Automatically recognizes start holes for individual or multiple profiles and auto-generates lead-ins based on start hole locations at the push of a button.



**CAMWORKS SALES**  
marketing@goengineer.com  
800.688.3234

**TECHNICAL SUPPORT**  
support@goengineer.com  
888.559.6167



HCL Technologies (HCL) empowers global enterprises with technology for the next decade today. HCL's Mode 1-2-3 strategy, through its deep-domain industry expertise, customer-centricity and entrepreneurial culture of ideapreneurship™ enables businesses to transform into next-gen enterprises.

HCL offers its services and products through three lines of business - IT and Business Services (ITBS), Engineering and R&D Services (ERS), and Products & Platforms (P&P). ITBS enables global enterprises to transform their businesses through offerings in areas of Applications, Infrastructure, Digital Process Operations, and next generation digital transformation solutions. ERS offers engineering services and solutions in all aspects of product development and platform engineering while under P&P. HCL provides modernized software products to global clients for their technology and industry specific requirements. Through its cutting-edge co-innovation labs, global delivery capabilities, and broad global network, HCL delivers holistic services in various industry verticals, categorized under Financial Services, Manufacturing, Technology & Services, Telecom & Media, Retail & CPG, Life Sciences, and Healthcare and Public Services.



www.hcltech.com

As a leading global technology company, HCL takes pride in its diversity, social responsibility, sustainability, and education initiatives. As of 12 months ending on March 31, 2020, HCL has a consolidated revenue of US\$ 9.95 billion and its 153,000+ ideapreneurs operate out of 50 countries. For more information, visit www.hcltech.com