

Metal Additive Manufacturing Machine

BLT-S400



ISO9001:2015 / ISO14001:2015 / ISO45001:2018

Batch Production, "Smart" Manufacturing Upgraded

Aerospace Quality Assurance | Stable Full-substrate Printing | High-quality Batch Production | A Variety of Build Dimension Options | Automatic Circulation of Powder



Batch Application Verification
Maturity and stability of machine operation



Multiple Lasers are Optional Two-way Intelligent Powder Feeding
Efficiency increases dramatically



Long-life Filtration System
Safety & Longevity double guarantee



Self-adapting Powder Spreading Correction
Deep learning technology makes printing smarter



Automatic Circulation of Powder
Powder closed-circulation processing system
Automatic recycling sieving and supply



3D Reconstruction
Building visualization is easy for quality traceability

Supporting Materials	Titanium Alloy, Aluminum Alloy, Superalloy, Stainless Steel, High-strength Steel, Tool Steel
Build Dimension ⁽¹⁾	400mm×300mm×400mm (W×D×H)
Laser Power	500W×2; 500W×3; 500W×5; 500W×6
Wave Length	1060nm-1080nm
Layer Thickness	20μm~100μm
Maximum Scanning Speed	7m/s
Building Speed ⁽²⁾	50cm ³ /h; 75cm ³ /h; 125cm ³ /h; 150cm ³ /h
Preheating Temperature	RT +20°C~200°C
Beam Quality	M ² <1.1
Optics System	F-theta Lens
Recoating	Single/Double-direction
Minimum Oxygen Content	≤100ppm
Gas Requirement	Ar/N ₂
Power Requirement	≤19kW; ≤20kW; ≤25kW; ≤26kW
Supply Voltage	AC380V 3Ph/N/PE
Machine Dimension ⁽³⁾	3900mm×1200mm×2200mm (W×D×H) Height of Tri-color Indicator: Approx.410mm
Machine Weight	Approx. 3200kg
Software	Magics; BLT-BP; BLT-MCS



*The figure of the machine is only for illustration, and the product is subject to actual sales.

Citations: (1)Excluding substrate thickness. (2)Dependent on part geometry, material and parameter set used.

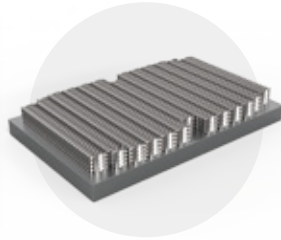
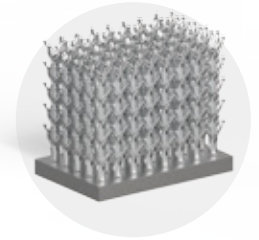
(3)The dimension does not include the height of tri-color indicator and the height is remarked separately. The dimension is only theoretical, the actual data is affected by the configuration, subject to the installation.

*The data is under the condition of BLT, and the data is subject to actual sales.

> BLT-S400 APPLICATION CASES



Full Substrate Swirler

Full Substrate
Steel SheetFull Chamber
Support FrameFull Chamber
Support

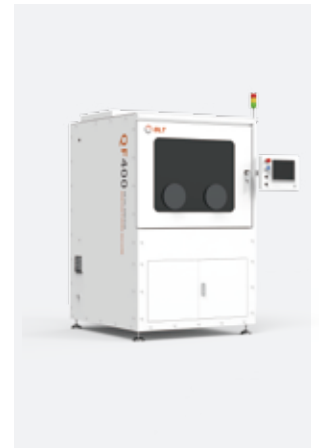
> BLT-S400 INTELLIGENT MODULES

Standard Functions

Diagnosis Fault-grading/Real-time Status Monitoring/Process Data Traceability

Optional FunctionsBLT-MCS Connect/BLT-MES System/Automatic Grafting
/Recoating Detection/3D Reconstruction

> BLT-S400 AUTOMATION SOLUTIONS

Powder Sieving Machine
BLT-SF400Powder Collection Machine
BLT-WL200Powder Adding Machine
BLT-GF500Depowdering Machine
BLT-QF400

> BLT-S400 CONSUMABLES AND POWDERS

Consumable

Scraper/Substrate

PowderTitanium Alloy/Aluminum Alloy/Superalloy/Stainless Steel
/High-strength Steel/Tool Steel