



# License Management Guide for Floating Network Server License

This document provides details on CAMWorks License Management (activation, reactivation, and deactivation for a [multi-user \(Floating Network\) installation](#) using Activation IDs (i.e., the [Online License Activation Method](#))

## Disclaimer

Geometric Americas, Inc. (a subsidiary of HCL Technologies Ltd.) makes no warranties, either express or implied with respect to this manual. Geometric Americas, Inc. reserves the right to revise and improve products as it sees fit, and to revise the specifications and information contained herein without prior notice. Due to continuing product development, specifications and capabilities described in this manual are subject to change without notice.

## Trademarks

The following and other product names and corporate references herein are registered or proprietary trademarks of their respective owners.

CAMWorks® is a registered trademark of Geometric Americas, Inc.

SOLIDWORKS® is a registered trademark of Dassault Systèmes SOLIDWORKS Corp.

FeatureManager™ is a trademark owned jointly by DS SOLIDWORKS and Bentley Systems, Inc.

All other brands and names are property of their respective owners.



Copyright © 2022 Geometric Americas, Inc. All Rights Reserved.



**Product Version: CAMWorks 2022 SP2**



## **TABLE OF CONTENTS**

|  |           |
|--|-----------|
| <b>1. CAMWorks License Management Overview .....</b>   | <b>5</b>  |
| Procuring the CAMWorks License .....   | 5         |
| Information Covered in this Manual.....  | 5         |
| CAMWorks Licensing Information .....   | 5         |
| Components of a Floating Network Installation Setup .....  | 5         |
| 1. License Server .....  | 5         |
| 2. Clients .....   | 6         |
| CAMWorks Modules.....  | 6         |
| CAMWorks License Manager (Software Tool) .....   | 7         |
| Launching the CAMWorks License Manager Tool with Admin Rights .....                                      | 7         |
| Installing/Upgrading the CAMWorks License Manager Tool.....  | 8         |
| User Subscription Plan.....  | 8         |
| License Version Date .....   | 8         |
| Online License Activation for a Floating Network Setup .....   | 8         |
| Options for Online License Activation of CAMWorks (Floating Network License) ..                          | 9         |
| Online License Reactivation.....   | 10        |
| Options for Online Reactivation of CAMWorks License .....  | 10        |
| Online License Deactivation (For Transferring a Floating Network Server License to Another System) ..... | 11        |
| <b>2. Supported Platforms &amp; Pre-Requisites.....</b>  | <b>12</b> |
| Supported Platforms for Floating Network Setup.....  | 12        |
| Pre-requisites for Activating License for a Floating Network Setup .....                                 | 12        |
| <b>3. Activating a Floating Network License Setup Using Automatic Method .....</b>                       | <b>13</b> |
| Steps to Activate the Floating Network License Setup .....   | 13        |
| Step 1: Supported Platforms, Pre-requisites and Activations IDs .....                                    | 13        |
| Step 2: Installing CAMWorks License Manager Tool on License Server.....                                  | 13        |
| Step 3: Activating License on the CAMWorks License Server.....   | 13        |
| Step 4: Activating the License on Clients of the Floating Network.....                                   | 19        |
| <b>4. Renewing/Upgrading a Floating Network License Setup Using Automatic Method .....</b>               | <b>22</b> |
| Steps to Reactivate Floating Network License on License Server.....                                      | 22        |
| <b>5. Transferring Floating Network Server License Using Automatic Method .....</b>                      | <b>25</b> |
| Steps to Transfer Floating Network Server License using Automatic Method .....                           | 25        |
| <b>6. Activating a Floating Network License Setup Using Manual Method.....</b>                           | <b>30</b> |
| Steps to Activate the Floating Network License Setup .....   | 30        |



|  |           |
|--|-----------|
| <b>7. Renewing/Upgrading a Floating Network Setup Using Manual Method .....</b>    | <b>35</b> |
| Steps to Reactivate a Floating Network License using Manual Method .....           | 35        |
| <b>8. Transferring Floating Network Server License Using Manual Method</b>         | <b>38</b> |
| Manual Method of License Deactivation and Activation.....                          | 38        |
| <b>Appendix A: CAMWorks Licensing Information .....</b>                            | <b>44</b> |
| Types of CAMWorks License .....  | 44        |
| 1. The Nodelocked (Standalone) License .....                                       | 44        |
| 2. The Floating Network Server License .....                                       | 44        |
| License Duration of the CAMWorks License.....                                      | 44        |
| CAMWorks License of Perpetual Nature .....   | 45        |
| CAMWorks License of Time-bound nature .....  | 45        |
| CAMWorks License Modes .....   | 45        |
| Commercial Mode.....   | 45        |
| Educational Mode .....   | 45        |
| Instructor Mode .....  | 46        |
| Demonstration Mode .....   | 46        |
| Installing/Upgrading CAMWorks License Manager Tool.....                            | 47        |
| Automatically Installing/Upgrading CAMWorks License Manager Tool .....             | 47        |
| Manually Installing/Upgrading the CAMWorks License Manager Tool .....              | 47        |
| Significance of Upgrading CAMWorks License Manager Tool on License Server          | 47        |
| <b>Appendix B: CAMWorks Modules .....</b>  | <b>48</b> |
| Viewing the CAMWorks Modules you are licensed to run .....                         | 48        |
| Viewing CAMWorks Modules in the CAMWorks License Info dialog box .....             | 48        |
| Viewing Info in Authorized Modules tab of CAMWorks License Manager Dialog box..... | 50        |
| Selectively Activating CAMWorks Modules.....                                       | 51        |
| The need to selectively activate CAMWorks Modules .....                            | 51        |
| Selectively activating CAMWorks Modules on a Floating Network .....                | 52        |
| <b>Appendix C: User Subscription Plan .....</b>                                    | <b>53</b> |
| Enrolling for a User Subscription Plan.....  | 53        |
| Benefits of User Subscription Plan.....  | 53        |
| Viewing the Expiry Date of your User Subscription Plan .....                       | 53        |
| Significance of the Expiry Date of your User Subscription Plan.....                | 54        |
| Correlation Between USP Expiry Date and License Expiry Date.....                   | 55        |
| <b>Appendix D: Checking the License Version Date.....</b>                          | <b>56</b> |
| License Version Date of CAMWorks Version and its Significance.....                 | 56        |
| Viewing the License Version Date associated with a CAMWorks Version.....           | 56        |



# **1. CAMWORKS LICENSE MANAGEMENT OVERVIEW**

## **Procuring the CAMWorks License**

Geometric Americas, Inc. sells products and modules under the CAMWorks suite either directly or through a worldwide network of **Value-Added Resellers (VARs)**. Users may choose between single user licenses (also alternatively referred to as *Standalone* or *Nodelocked* licenses) or multi-user licenses (henceforth referred to as [Floating Network Server](#) licenses in this text).

## **Information Covered in this Manual**

After downloading and installing the CAMWorks application, the next step is to activate your license.

This document provides information on activating a CAMWorks [Floating Network Server license](#) (multi-user) using the [Online License Activation Method](#).

For information on managing a [Nodelocked \(Standalone\) license](#), refer the document named **Nodelocked\_Online\_License\_Management\_Guide.pdf**.

## **CAMWorks Licensing Information**

Before you activate your [Floating Network Server license](#), you must possess a basic understanding of the licensing related information such as the license type, license duration, license mode, etc. For details, we recommend that you refer to [Appendix A: CAMWorks Licensing Information](#) of this document.

## **Components of a Floating Network Installation Setup**

A Floating Network installation setup consists of the following two installation components:

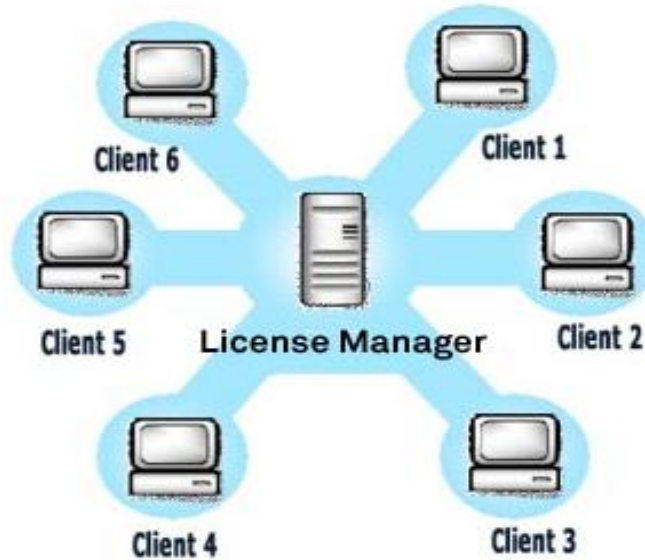
### **1. License Server**

One computer on the network must be designated as the **License Server**. This computer will be used to submit the license request, install, and run the CAMWorks License Service and activate the floating network license. (All these activities are done via the [CAMWorks License Manager](#) tool.) Once the license is activated, it will function as the centralized system that provides licenses to client computers for running the various modules of the CAMWorks application.

---

**If required, a virtual machine can be designated as the CAMWorks License Server for a floating network.**

---



Representative Image of Client- License Server Setup for Floating Network License

## 2. Clients

The client computers are set up to run the *CAMWorks* application by accessing the floating network license setup on the *CAMWorks License Server*. Unlimited computers can be set up as clients on a network. However, the maximum permissible number of concurrent users is equal to the number of floating licenses that you purchase.

---

**Client Machines can be connected to the CAMWorks License Server either via Microsoft Networks or VPN (Virtual Private Networks).**

---

### Note:

The [License Server](#) computer can also be set up as a Client. Such a setup on the **License Server** allows you to verify the license as well as optionally to run the *CAMWorks* application on it.

## CAMWorks Modules

The *CAMWorks* application is modular in nature i.e., depending on varied CNC machining requirements, it has separate modules for *2½ Axis Milling*, *3 Axis Milling*, *Rotary Milling*, *3 Axis with Undercut*, *Turning*, *Mill Assembly Machining*, *Machine Simulation*, etc.

When you purchase the *CAMWorks* application, you will be advised on the combination of *CAMWorks* modules best suited to fulfil your machining requirements. The *CAMWorks* license you receive and activate will be configured to run only the specific modules that you have purchased. When you run the *CAMWorks* application, only the user interfaces associated with the specific modules you purchased will be activated. For Floating Network





## License Activation Using Online Activation Method

Licenses that are multi-user in nature, the licenses for *CAMWorks* modules can be selectively activated or released back to the floating network on the client computers to make them available for other clients.

Refer [Appendix B: CAMWorks License Modules](#) for the following information related to *CAMWorks* modules:

- [Viewing the CAMWorks Modules you are licensed to run](#)
- [Selectively activating CAMWorks modules on a floating network](#)

## CAMWorks License Manager (Software Tool)

The *CAMWorks License Manager* software tool is used to activate the license as well as to manage its the licensing mechanism. When you run the *CAMWorks* Installer, this tool automatically installed/upgraded along with the *CAMWorks* application.

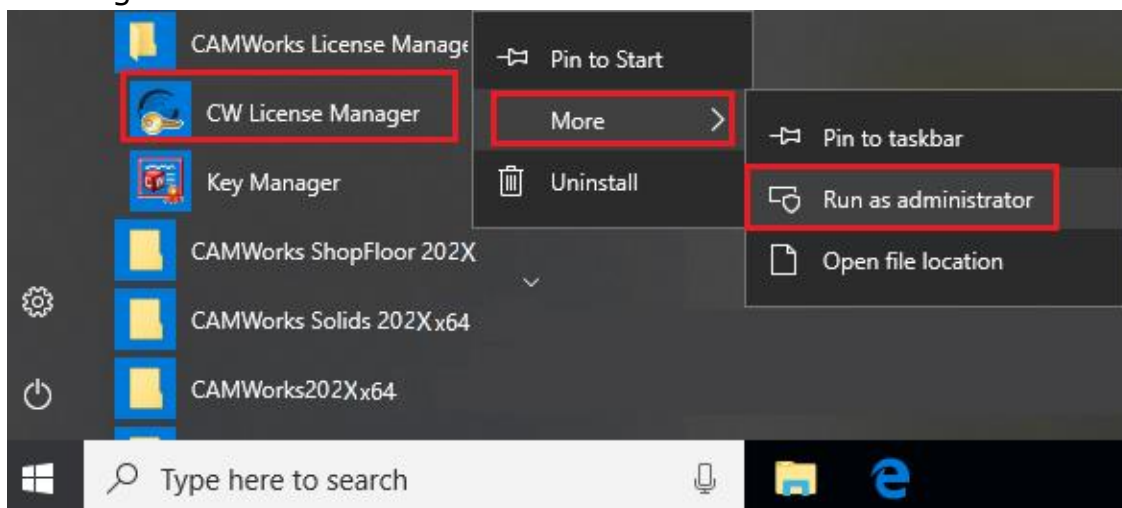
### Launching the CAMWorks License Manager Tool with Admin Rights

You need to launch the *CAMWorks License Manager* tool with administrator privileges in order to activate, change and apply the license configuration settings within it. Without administrator-level rights, any changes done to the license configuration settings will be applicable only to the current user.

#### Launching CAMWorks License Manager on Windows Systems with Admin Rights

1. Click on the *Windows 10 Start* menu and select ***CAMWorks License Manager***.
2. The ***CW License Manager*** item will be displayed under it. Right-click on ***CW License Manager*** and select ***More>>Run as administrator*** from the cascading context menu.

The *CAMWorks License Manager* dialog box will be displayed with full Admin rights.



Launching CAMWorks License Manager Tool with Admin Level Rights



### Launching CAMWorks License Manager from within SOLIDWORKS Application

The *CAMWorks License Manager* tool can be launched from the *SOLIDWORKS* or *CAMWorks Solids* environment if the *CAMWorks* application is loaded as an *Add-in*. To launch the *CAMWorks License Manager* tool, click on the **Help** menu and select **CAMWorks 2022>>License Manager**.

The *CAMWorks License Manager* dialog box will be displayed with full Admin rights.

### Installing/Upgrading the CAMWorks License Manager Tool

Refer the topic: [Installing/Upgrading the CAMWorks License Manager Tool](#) in [Appendix A: CAMWorks Licensing Information](#) of this document.

## User Subscription Plan

When you purchase a CAMWorks license, you will also be enrolled for a CAMWorks **User Subscription Plan (USP)** of a specific duration after paying the applicable fee. You will be briefed about USP when you purchase the desired products/[modules](#) from the CAMWorks suite of applications.

Being enrolled in the *CAMWorks User Subscription Plan* makes you eligible to receive CAMWorks Technical support and training. It also allows you to keep your CAMWorks applications up to date with new features and performance enhancements in *CAMWorks* released in the form of *CAMWorks Releases* and *Service Packs*.

If your USP expires while your CAMWorks license is still active, it may impact your eligibility to install the latest CAMWorks Service Packs. For details, please refer, [Appendix C: User Subscription Plan](#).

## License Version Date

*Geometric Americas, Inc.* periodically releases new *CAMWorks* versions in the form of *Service Packs*. Every *CAMWorks* version released has a *License Version Date* associated with it. This *License Version Date* indicates whether you are eligible to use the newly released *CAMWorks* version or not.

For details on how to check the License Version Date of the CAMWorks version that you intend to install and you whether you are eligible to run it, refer [Appendix D: Checking the License Version Date](#).

## Online License Activation for a Floating Network Setup

The *Online License Activation* method (introduced from **CAMWorks 2022 SP0** version onwards) employs *Activation IDs* that function as software keys for





activating the *CAMWorks* application and its various licensed modules and products.

The *Activation IDs* for the *CAMWorks* application are alphanumeric and consist of 32 characters. One or more Activation IDs, depending on the products ordered, will be emailed to end users upon processing of a *CAMWorks* related purchase order.

Once received, these Activation ID(s) must be validated on the machine designated as the [License Server](#) for license activation purposes. To do so, input the Activation ID(s) in the relevant user interface of the [CAMWorks License Manager tool](#) installed on [License Server](#). These Activation ID(s) will then be validated online for successful license activation.

Post successful activation of the license on the [License Server](#), the client machines on the Floating Network must be configured to access the *CAMWorks* license on the [License Server](#).

This document provides detailed information on how to activate, deactivate, and reactivate (for renewing or upgrading) the *CAMWorks* license for a [Floating Network Setup](#) using the **Online License Activation Method**.

For details on how to activate/deactivate/reactivate the *CAMWorks* license for a [Nodelocked \(Standalone\) installation](#) using the **Online License Activation Method**, refer the following document that is present in the same folder as this document: ***Nodelocked\_Online\_License\_Management\_Guide.pdf***.

### Options for Online License Activation of CAMWorks (Floating Network License)

Based on whether or not you have an Internet connection on the [License Server](#) machine on which the [Floating Network Server license](#) will be activated, following two options are available for Online license activation method:

#### 1. Automatic Option for Online Activation of License:

In the *Automatic* method of Online license activation, a live Internet connection is required for activating the license. You need to input the *Activation IDs/ Entitlement IDs* provided to you and then validate them.

For details on how to activate a newly acquired [Floating Network Server license](#) using this method, refer the following topic within this document:

**[Chapter 3: Activating a Floating Network License Setup using Automatic Method](#)**

#### 2. Manual Option for Online Activation of License

Use this method only if you do not have a live internet connection. In this method of online license activation, you need to create a license request file using the Activation IDs (Entitlement IDs) provided to you and then



email to your reseller or [Register@camworks.com](mailto:Register@camworks.com). As a response, you will receive a license file via email. You need to load and activate this received file to activate your CAMWorks products.

For details on how to activate a newly acquired [Floating Network Server license](#) using this *Manual* method, refer the following topic within this document:

[Chapter 6: Activating a Floating Network License Setup using Manual Method](#)

## Online License Reactivation

Your current license will need to be reactivated in the following scenarios:

- When you want to replace your current license with an upgraded license (that confers permission for additional number of products and/or [modules](#))
- When you want to reactivate your existing license after its license duration expires
- When you want to renew your [User Subscription Plan \(USP\)](#) after it expires

### Options for Online Reactivation of CAMWorks License

CAMWorks provides the following two options to reactivate your license using the *Online License Reactivation* method:

#### 1. Automatic Option for Online Reactivation of License:

In the *Automatic* method of Online license reactivation, a live Internet connection is required for reactivating the license. When this method is selected and you execute the **Reactivate My Products...** command, the license manager mechanism will contact the license servers of *HCL Technologies*, validate the *Activation IDs* and then reactivate all the products that were selected for reactivation on the machine.

For details on how to reactivate your existing [Floating Network Server license](#) using the *Automatic* method, refer the following topic within this document:

[Chapter 4: Renewing/Upgrading a Floating Network License Setup using Automatic Method](#)

#### 2. Manual Option for Online Reactivation of License

The *Manual* method of license reactivation is recommended only in case you do not have a live Internet connection.

For details on how to reactivate your existing [Floating Network Server license](#) using the *Manual* method, refer the following topic within this document:

[Chapter 7: Reactivating a Floating Network License Setup using Manual Method](#)



### Online License Deactivation (For Transferring a Floating Network Server License to Another System)

The need to transfer your active *CAMWorks* license from one computer to another may occur if a new computer is purchased to replace a failed/ outdated computer or simply to upgrade to a better performance machine.

The *Online Deactivation/Activation* options provided within the [CAMWorks License Manager](#) tool allow you to deactivate your active *CAMWorks Floating Network Server License* on your current [License Server](#) and then activate that license on another Windows system designated as the new License Server.

- For details on all the steps involved in transferring your *CAMWorks Floating Network Server license* from one [License Server](#) to another using the *Automatic Method* of *Online Deactivation/Activation*, refer the following topic within this document:

[Chapter 5: Transferring Floating Network Server License Using Automatic Method](#)

- For details on all the steps involved in transferring your *CAMWorks Floating Network Server license* from one [License Server](#) to another using *Manual Method* of *Online Deactivation/Activation*, refer the following topic within this document: [Chapter 8: Transferring Floating Network Server License Using Manual Method](#)



## 2. SUPPORTED PLATFORMS & PRE-REQUISITES

### Supported Platforms for Floating Network Setup

#### Supported OS Platforms for CAMWorks License Server

- Windows 10
- Windows 7 SP1 or higher
- Window Server 2019
- Windows Server 2016 including R2
- Windows Server 2012 including R2

#### Supported OS Platforms for Client Machines

- Windows 10
- Windows 8.1 (Home editions are not supported)
- Windows 7 SP1 or higher (Home editions are not supported)

### Pre-requisites for Activating License for a Floating Network Setup

1. **CAMWorks License Manager:** The presence of the [CAMWorks License Manager](#) tool on the [Client](#) and [License Server](#) machine is a pre-requisite for activating the CAMWorks license. For details, refer the topic [CAMWorks License Manager for a Floating Network](#) in this chapter.
2. **Administrator Privileges:** You must be logged in as Administrator with full privileges when setting up or making changes in the **CAMWorks License Manager**.
3. **Microsoft Networks:** The *Floating Network* license is supported on Microsoft Windows networks only.
4. **Read Permissions:** The folder in which the [CAMWorks License Manager tool](#) is installed on a [client computer](#) must be on a local drive of the current computer and must have read permissions in order to access the floating license residing on the [License Server](#).
5. **MAC Addresses:** MAC (*Media Access Control*) addresses are identifiers assigned to most network adapters or network interface cards by the manufacturer for identification. To ensure that the CAMWorks license on the server remains active, it is recommended that:
  - The [License Server](#) computer should contain only one MAC address and it must remain static.
  - This License Server computer should not be moved or reconnected to the network using a different method. For example, from wireless to hardwired after the license has been issued and is running..



### **3. ACTIVATING A FLOATING NETWORK LICENSE SETUP USING AUTOMATIC METHOD**

Given in this chapter are the steps to activate a [Floating Network License Setup](#) using the [Automatic](#) option of [Online Activation](#) licensing method.

## **Steps to Activate the Floating Network License Setup**

### **Step 1: Supported Platforms, Pre-requisites, and Activations IDs**

1. Ensure that the [License Server](#) and [Clients](#) on the Floating Network have a [supported OS platforms](#) (refer [Chapter 2 of this document](#)).
2. Ensure that all the pre-requisites for activating the license on a Floating Network setup are met (refer [Chapter 2 of this document](#)).
3. Ensure that you are in possession of the Activation ID(s) provided to you for activation for the CAMWorks license. (You will receive these IDs once you pay the licensing fees.)

### **Step 2: Installing CAMWorks License Manager Tool on License Server**

The CAMWorks licensing activation and management mechanism is controlled using the *CAMWorks License Manager* tool. This tool needs to be installed on the *License Server* and *Clients* in order to activate the license.

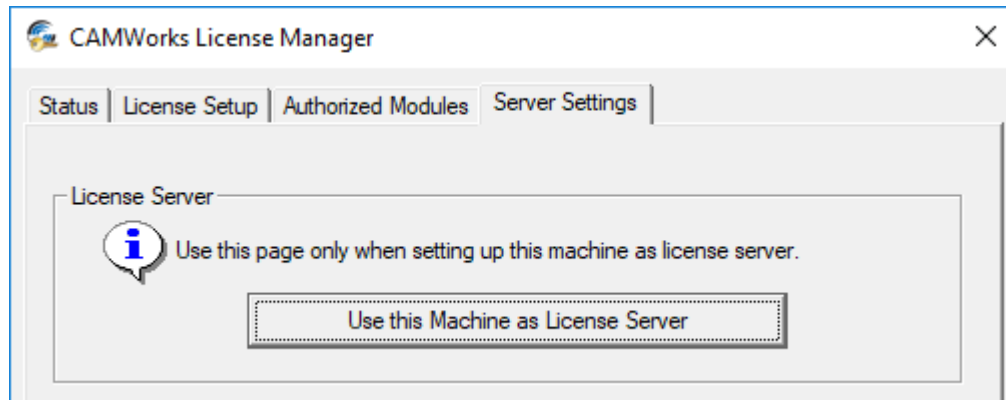
- In case you intend to also use the Windows system designated as the License Server as a Client system on which the CAMWorks application will be run, then download and install the CAMWorks application on the License Server. The *CAMWorks License Manager* tool will be automatically installed along with the CAMWorks application when you run the CAMWorks Installer.
- In case you intend to use the License Server only for license management with respect to CAMWorks, then you don't need to install the CAMWorks application on the License Server. Only install the *CAMWorks License Manager* tool from the *CAMWorks Installer Package*. For details on how to install this tool from the *CAMWorks Installer Package*, refer the topic: [Manually Installing/Upgrading the CAMWorks License Manager Tool](#) provided in [Chapter 1](#) of this document.

### **Step 3: Activating License on the CAMWorks License Server**

- i. On the CAMWorks License Server, [launch the CAMWorks License Manager tool](#).
- ii. The *CAMWorks License Manager* dialog box will be displayed. Switch to its *Server Settings* tab.

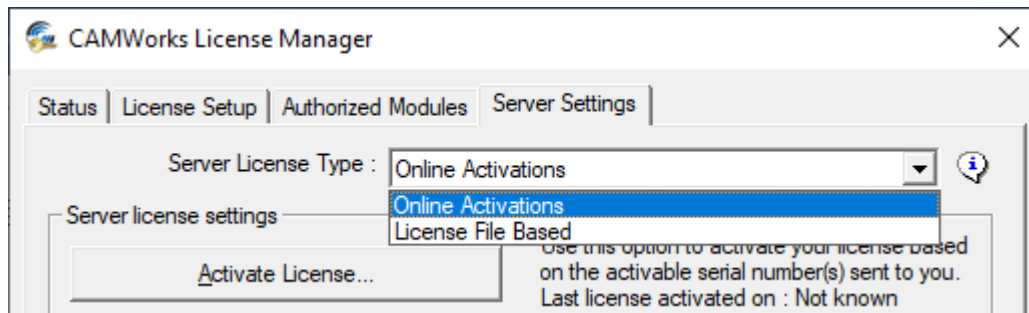


- iii. Within the *License Server* group box, click on the ***Use this machine as License Server*** button.



**'Use this Machine as License Server' button in Server Settings Tab**

- iv. In the ***Server License Type*** dropdown list, select the ***Online Activations*** option.



**Select the 'Online Activations' Option for Server License Type**

- v. Parameters associated with online activation of the *Floating Network Server License* will be displayed in this tab. In the *Server License Settings* group box under this tab, click on the ***Activate License...*** button.
- vi. The ***CAMWorks Product Activation*** dialog box will be displayed. Select the ***Automatically over the Internet (Recommended)*** option.
- vii. In the field provided below the label ***Enter your Activation ID(s) and click on Add button:***, input the Activation ID provided to you.





Select the 'Automatically over the Internet' option and input your Activation ID in the 'Enter your Activation ID(s) field of the CAMWorks Product Activation Dialog Box

- viii. Click on the *Add* button adjacent to this field. The Activation ID input by you will then be listed in the Activation IDs to be activated list box below the field.
- ix. If you have been provided multiple Activation IDs, then repeat steps vii. and viii.
- x. Click on the ***Find my product(s)*** button below the list box.  
All the CAMWorks products associated with the input Activation IDs will be displayed in the Products associated with above IDs list box in a tabular format. The license expiry date and ***User Subscription Plan (USP)*** expiry date of each product will also be displayed.
- xi. Place a check in the ***I have read the HCL Technologies Privacy Policy and agree to its terms and conditions*** check box.
- xii. Placing in the check in this checkbox activates the ***Activate My Products...*** button at the bottom of the dialog box. Click on this button.



**CAMWorks Product Activation**

**License Activation**  
To activate your CAMWorks product you must use the Activation IDs.

How would you like to activate?

☒ Automatically over the internet (recommended)  
☐ Manually via E-Mail (Add all activation IDs and then click on activate)

Enter your Activation ID(s) and click on add :

**Add**

XXXX-XXXX-XXXX-XXXX-XXXX-XXXX-XXXX-XXXX

**Find My Product**

Products associated with above IDs :

| Product                       | ExpiryDate | USPDate     |
|-------------------------------|------------|-------------|
| CAMWorks Milling Professional | Permanent  | 31-Oct-2022 |
| CAMWorks Solids P             | Permanent  | 31-Oct-2022 |
| Commercial                    | Permanent  | 31-Oct-2022 |

☒ I have read the HCL Technologies [Privacy Policy](#) and agree to its terms and condition

**Activate My Products...** **Close** **Help**

Execute 'Find My Products', place a check in the licensing terms checkbox and then click on the 'Activate My Products...' Button

- xiii. The **CAMWorks Product Activation - User Details** pop-up dialog box will be displayed. Provide your username and email ID within this pop-up dialog box and click the OK button. The pop-up dialog box will close.



The dialog box is titled "CAMWORKs Product Activation". It contains two input fields: "Username\*" with the value "aswati nath" and "Email-ID\*" with the value "aswati.nath@hcl.com". At the bottom, there are three buttons: "Ok", "Close", and "Help".

**CAMWorks Product Activation – User Details Dialog Box**

- xiv. The license manager mechanism will now attempt establish contact with the HCL Technologies' license servers. Upon successful establishment of contact, it will validate the Activation ID(s) input by you.
- xv. Up on successful validation, the **CAMWorks Product Activation – Currently Activated Products** user interface will be displayed. This user interface will list each activated CAMWorks product, the expiry date of the product and the expiry date of its *User Subscription Plan (USP)* in tabular format.

The dialog box is titled "CAMWORKs Product Activation". It has a "Results" section with an information icon and the text "The list below shows currently activated products." Below this is a table titled "Currently Activated Products".

| Product                       | ExpiryDate  | USPDate     |
|-------------------------------|-------------|-------------|
| CAMWorks Plus                 | 01-Jun-2025 | 31-Oct-2022 |
| CAMWorks Lite                 | 01-Jun-2025 | 31-Oct-2022 |
| Commercial                    | permanent   | 31-Oct-2022 |
| CAMWorks Milling Professional | permanent   | 31-Oct-2022 |
| CAMWorks Solids P             | permanent   | 31-Oct-2022 |

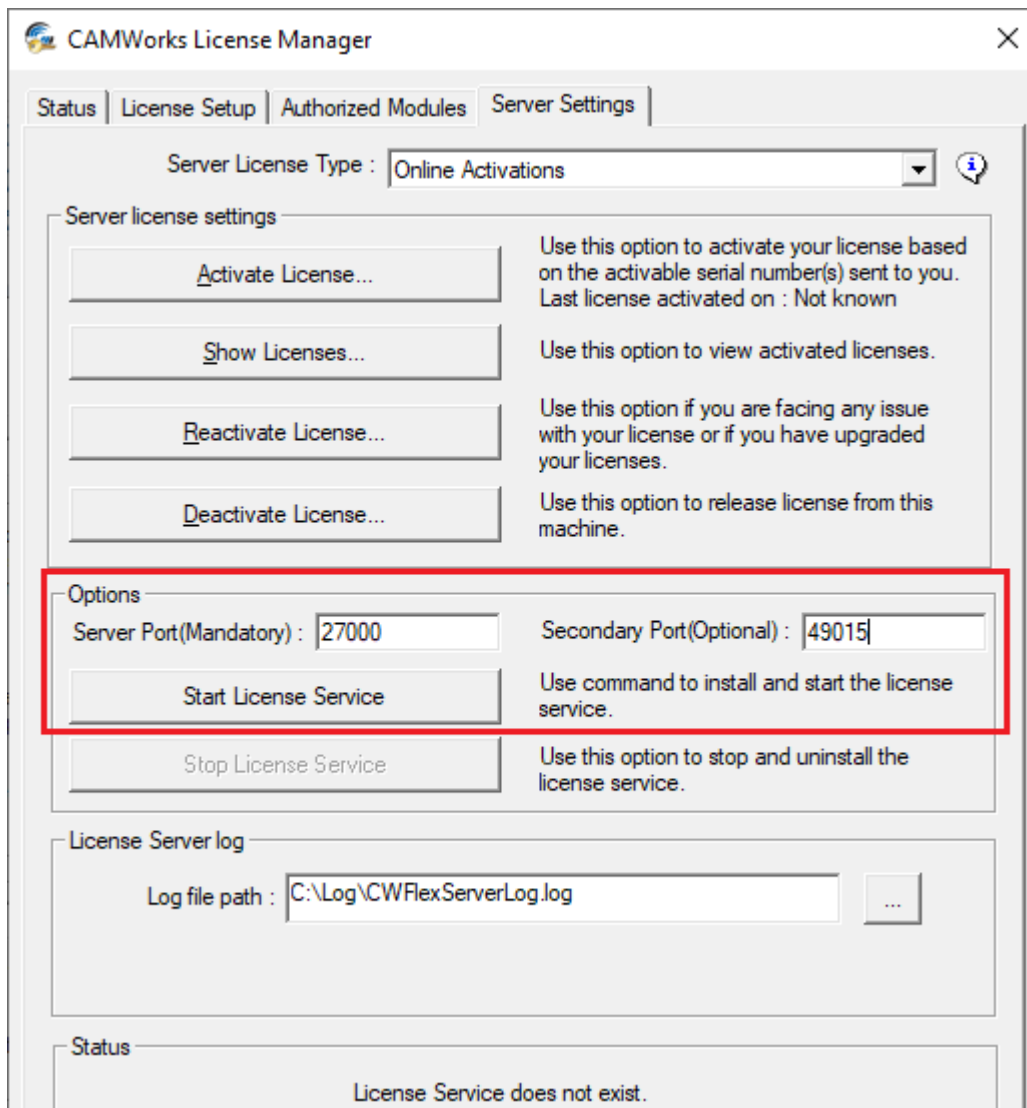
At the bottom right, there are two buttons: "Close" and "Help".

**CAMWorks Product Activation – Currently Activated Products Dialog Box**

- xvi. Click on the **Close** button to exit this user interface.
- xvii. The user interface will now revert to the **Server Settings** tab. Input the mandatory (primary) **Server Port** number and **Secondary Port** number (optional) in the fields provided within the **Options** group box of this tab.



- xviii. Click on the **Start License Service** button within the *Options* group box of this tab.

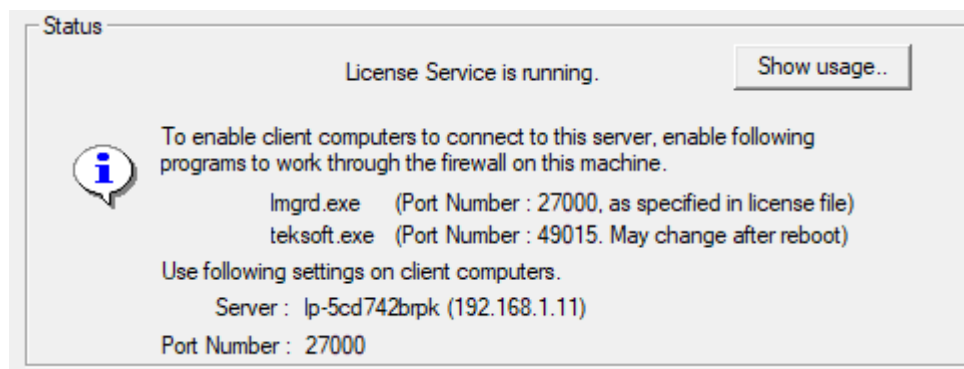


**Options Group Box under Server Settings tab when 'Online Activations' Option is selected as the 'Server License Type'**

- xix. If successfully activated, the **Status** group box at the bottom of the tab will indicate that the license service is now running.
- xx. The *Status* group box also indicates info about the *Server Host Name* and *Port Number* settings to be assigned in the *License Setup* tab for [client](#) computers.



## License Activation Using Online Activation Method



Message displayed in the Status Group Box when License Service runs successfully

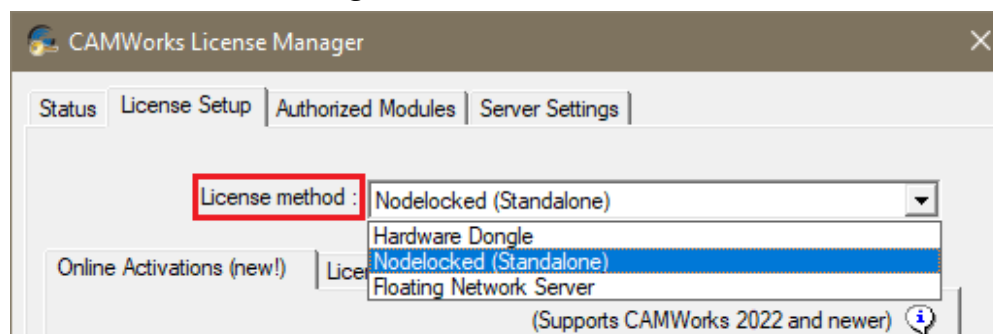
- xxi. Click on the **Apply** button at the bottom of the *CAMWorks License Manager* dialog box.
- xxii. Your *CAMWorks* license is now successfully activated. This is indicated by the status message that indicates that the *License Service* is running on the [License Server](#).

### Step 4: Activating the License on Clients of the Floating Network

After the *CAMWorks License Service* is installed and successfully running on the License Server, you can activate the license for the CAMWorks application on the client computers. This license activation is achieved by enabling the Clients to access the *License Service* running the [License Server](#) via the Floating Network. The [CAMWorks License Manager](#) tool (which is used to activate and manage the licensing mechanism) is automatically installed on all the [client](#) computers when the *CAMWorks* application is installed. On client computers, the activation of the license can be performed remotely, if required.

Following are the steps to activate the Floating Network license on each client:

- i. On the client system, [launch the CAMWorks License Manager tool with Admin-level rights](#).
- ii. The *CAMWorks License Manager* dialog box will be displayed. Click on the *License Setup* tab.
- iii. Under this tab, select **Floating Network Server** as the *License Method*.



Select 'Floating Network Server' option for License Method under License Setup Tab



- iv. Two contextual tabs will now be displayed under this tab viz. *Online Activations (New!)* and *License Based Activation*. Click on the contextual tab labelled **Online Activations (New!)**.
- v. In the *Configure FlexLM License* group box under this contextual tab, assign the followings settings for the parameters under **Set Server Host name and Port number for floating license**.
  - Type the name of the License Server computer in the **Server Host name** field.
  - Assign the port number in the **Port number** field.  
(For *Server Host Name* and *Port number*, refer the **Status** group box at the bottom of the *Server Settings* tab.)

**Parameters under ‘Set Server Host name and Port number for floating license’ in ‘Configure FlexLM License’ group box of License Setup Tab**

---

**Note:**

The **Server Host name** must be the Host name of the **License Server** computer, and not the **Host name** of the client computer.

For *Server Host Name* and *Port number*, refer the *Status* group box at the bottom of the *Server Settings* tab in *CAMWorks License Manager* dialog box of the License Server.

---

---

**Note:**

The Floating Network license allows a client computer to borrow a license for use when not connected to a network. This feature of borrowing a specific license on a client computer mandatorily requires the Port number of the Server computer to be input in the *License Setup* tab of the *CAMWorks License Manager* dialog box on the client computer.

---

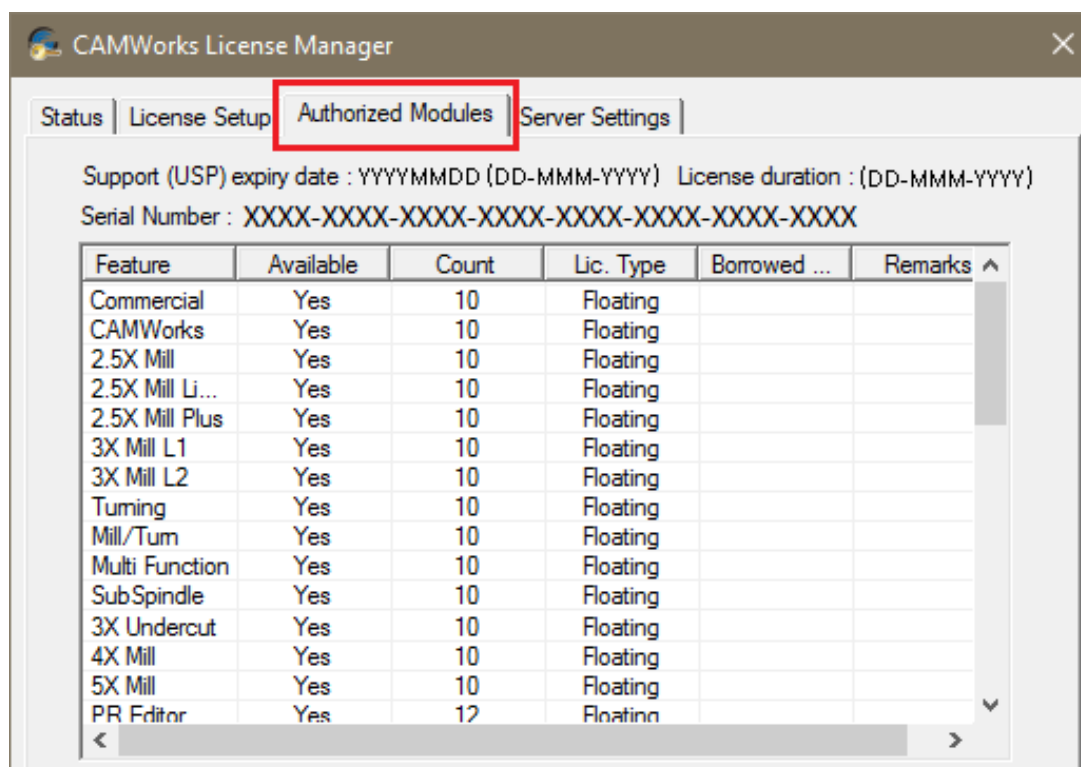
- vi. Click on the *Apply* button.
- vii. Click the *Authorized Modules* tab. All the [CAMWorks modules](#) (including information on their availability, type, borrow status, etc.) will be listed in this tab.





## License Activation Using Online Activation Method

- If the *Authorized Modules* tab is populated with the [CAMWorks modules](#), it indicates successful activation of the floating license.
- If the *Authorized Modules* tab is blank, then it indicates that the [License Server](#) may have a firewall that is preventing you from accessing it. You need to reconfigure the firewall so that it allows the client machines on the network to access the **License Service** on the *License Server*. Set the following exceptions in your Firewall:
  - Teksoft.exe
  - CWLicenseManager.exe
  - Lmgrd.exe



**Authorized Modules tab populated with CAMWorks modules indicates successful activation of the Floating Network license on a client**

- Click *OK* to close the *CAMWorks License Manager* dialog box. The *CAMWorks* license on the client system is now activated. (No additional information and actions are required for enabling floating network license on a client computer.)
- Repeat the above steps on each client on the floating network.  
Once done, the activation of the *CAMWorks* license on your *Floating Network Setup* is now successfully completed. You can now run the *CAMWorks* application on all the Clients.



## 4. RENEWING/UPGRADING A FLOATING NETWORK LICENSE SETUP USING AUTOMATIC METHOD

You need to reactivate your CAMWorks license when your license or [User Subscription Plan](#) expires or when you upgrade your license to include more CAMWorks modules.

Given in this chapter are the steps to reactivate your Floating Network Server License using the [Automatic option](#) of the [Online License Reactivation Method](#).

### Steps to Reactivate Floating Network License on License Server

1. On the [License Server](#), [launch the CAMWorks License Manager tool](#).
2. The *CAMWorks License Manager* dialog box will be displayed. Switch to the *Server Settings* tab. Under this tab, observe that *Online Activations* is selected as the *Server License Method*.
3. Observe that the *Status* group box indicates that the *CAMWorks License Service* is running. Click on the *Stop License Service* button within the *Options* group box of this tab. This action will stop and uninstall the active *CAMWorks License Service*.
4. A modal window stating that the License Service has been marked for removal and requesting you to close the License Manager for complete removal of the license service will be displayed. Click on the OK button within this modal to revert to the *Server Settings* tab.
5. Observe that the *Stop License Service* button is now disabled. Close the *CAMWorks License Manager* dialog box.
6. [Launch the CAMWorks License Manager tool](#) again. Switch to the *Server Settings* tab.
7. Observe that the *Reactivate Existing...* button is now enabled. Click on this button.
8. The *CAMWorks Product Reactivation* dialog box will be displayed. Select the *Automatically over the Internet (Recommended)* option.
9. The **Please select the Product(s) to be reactivated** list box will display all the CAMWorks products currently active on the machine. The license expiry date, [User Subscription Plan \(USP\)](#) expiry date and associated *Activation ID* for each product will also be displayed.
10. In this list box, place a check against all the product entries whose licenses you wish to reactivate.



## License Activation Using Online Activation Method

11. Place a check in the '*I have read the HCL Technologies Privacy Policy and agree to its terms and conditions*' check box.
12. Placing the check in this check box activates the **Reactivate My Products...** button at the bottom of the dialog box. Click on this button.

**CAMWorks Product Reactivation Dialog Box**

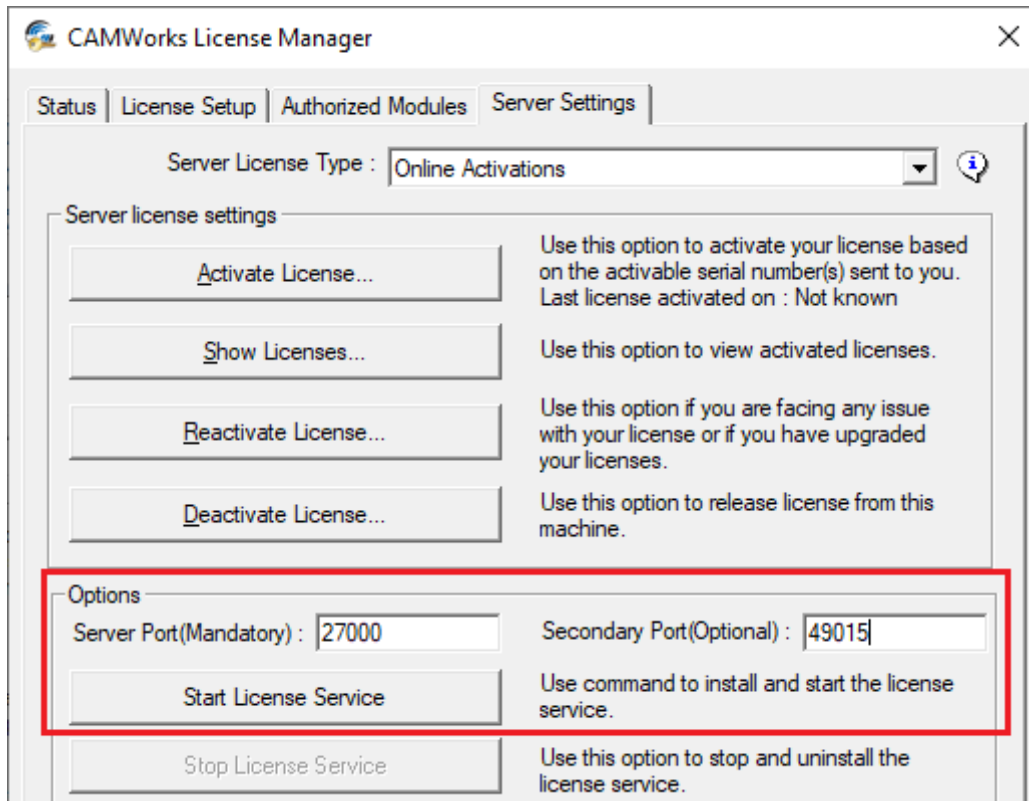
13. The license manager mechanism will now attempt to establish contact with the license servers of *HCL Technologies* via the Internet. Up on successfully establishing contact, it will validate all the products that were checked in the *Please select the product(s) that need to be reactivated* list box and then reactivate them.
14. Once this process of reactivation is complete, the modal window labeled *Reactivation* will be displayed. This modal window will display a status message listing all the *Activation IDs* that have been successfully reactivated.



## License Activation Using Online Activation Method

Click on the **OK** button to close this modal window. This user interface will revert to the *CAMWorks Product Reactivation* dialog box.

15. Click on the *Close* button at the bottom of the dialog box to revert to the *Server Settings* tab.
16. Input the mandatory (primary) *Server Port number* and *Secondary Port number* (optional) in the fields provided within the *Options* group box of this tab.



**Options Group Box under Server Settings tab when 'Online Activations' Option is selected as the 'Server License Type'**

17. Click on the *Start License Service* button within the *Options* group box of this tab. If successfully activated, the *Status* group box at the bottom of the tab will indicate that the license service is now running.
18. Click on the *Apply* button at the bottom of the *CAMWorks License Manager* dialog box.
19. Close the *CAMWorks License Manager* dialog box.

Your *CAMWorks* license is now successfully reactivated and the *CAMWorks License Service* is also running on your [CAMWorks License Server](#). Your [client machines](#) will be able to successfully access the reactivated floating network license on the [CAMWorks License Server](#) as the license service is successfully running on it (provided that the originally assigned port numbers were retained).



## 5. TRANSFERRING FLOATING NETWORK SERVER LICENSE USING AUTOMATIC METHOD

The need to transfer your active *CAMWorks* license from one machine to another usually comes up when you upgrade your hardware or Windows systems.

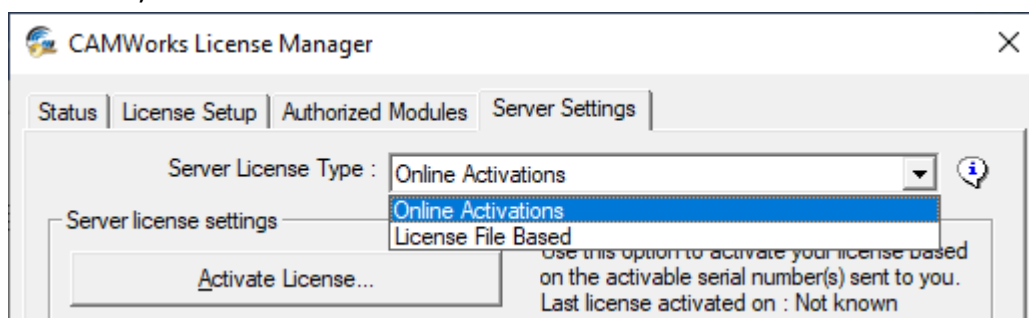
The *Online Deactivation/Activation* options provided within the [CAMWorks License Manager](#) tool allow you to deactivate your active *Floating Network License* on your current License Server and then transfer and activate that license on another system that you intend to designate as your new *CAMWorks License Server*.

This chapter covers the [Automatic Method of License Deactivation](#).

(This chapter covers all the steps involved in transferring your CAMWorks Floating Network Server license from your current License Server to another system you intend to designate as your new CAMWorks License Server using the *Automatic Method of Online Deactivation/Activation*.)

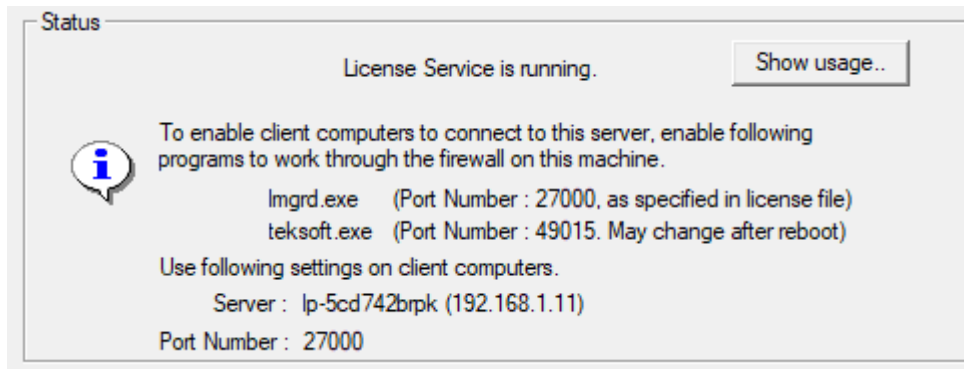
### Steps to Transfer Floating Network Server License using Automatic Method

- i. On the current CAMWorks License Server, [launch the CAMWorks License Manager tool](#).
- ii. The *CAMWorks License Manager* dialog box will be displayed. Switch to the *Server Settings* tab.
- iii. Under this tab, ensure *Online Activations* is selected as the *Server License Type*.



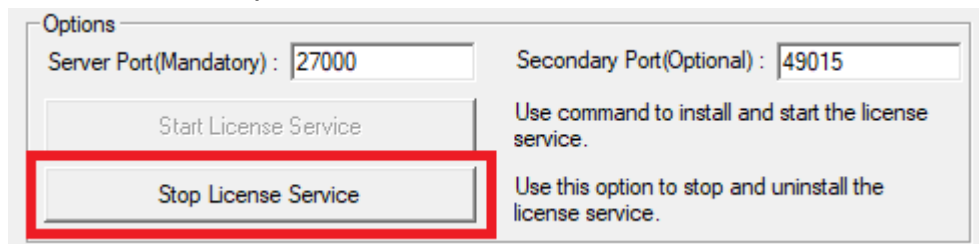
Select the 'Online Activations' Option for Server License Type

- iv. Observe that the *Status* group box indicates that the CAMWorks License Service is running.



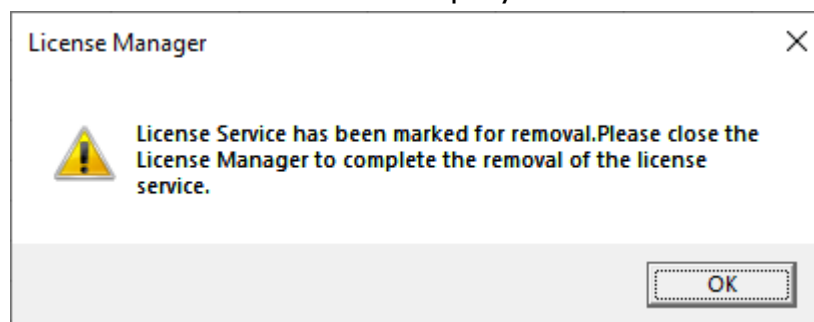
**Message displayed in the Status Group Box when License Service is running successfully**

- v. Click on the *Stop License Service* button within the *Options* group box of this tab. This action will stop and uninstall the active CAMWorks License Service.



**Click on the 'Stop License Service' Button within Options group box**

- vi. A modal window stating that the License Service has been marked for removal and requesting you to close the *License Manager* tool for complete removal of the license service will be displayed.



**Modal Window displayed once the Command to Stop the License Service is Executed**

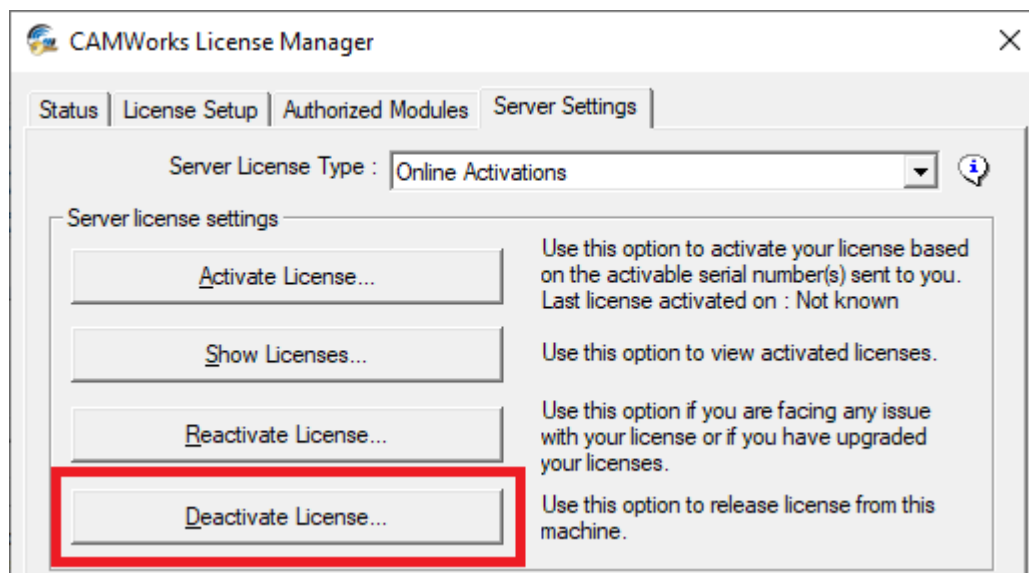
- vii. Once you click the *OK* button within this modal window, the user interface will revert to the *Server Settings* tab. Observe that the *Stop License Service* button is now disabled. Close the *CAMWorks License Manager* dialog box.
- viii. [Launch the CAMWorks License Manager tool again](#). Switch to the *Server Settings* tab.





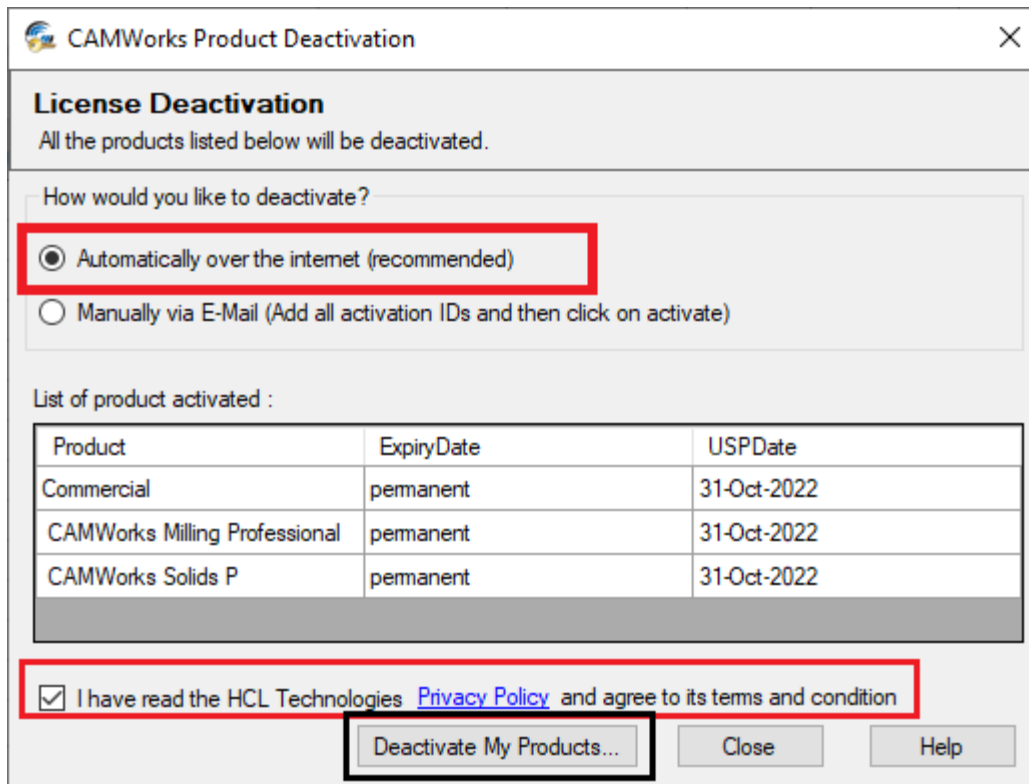
## License Activation Using Online Activation Method

- ix. Observe that the **Deactivate License...** button is now enabled. Click on this button.



Click on the 'Deactivate License...' Button under Server Settings Tab

- x. The *CAMWorks Product Deactivation* dialog box will be displayed. Select the **Automatically over the Internet (Recommended)** option.
- xi. The **Lists of Product(s) Activated** list box will display all the CAMWorks products currently active on the machine. The license expiry date and [User Subscription Plan \(USP\)](#) expiry date of each product will also be displayed.
- xii. Place a check in the **I have read the HCL Technologies Privacy Policy and agree to its terms and conditions** check box.
- xiii. Place in the check in this check box activates the **Deactivate My Products...** button at the bottom of the dialog box. Click on this button.



**CAMWorks Product Deactivation**

**License Deactivation**  
All the products listed below will be deactivated.

How would you like to deactivate?

☒ Automatically over the internet (recommended)

☐ Manually via E-Mail (Add all activation IDs and then click on activate)

List of product activated :

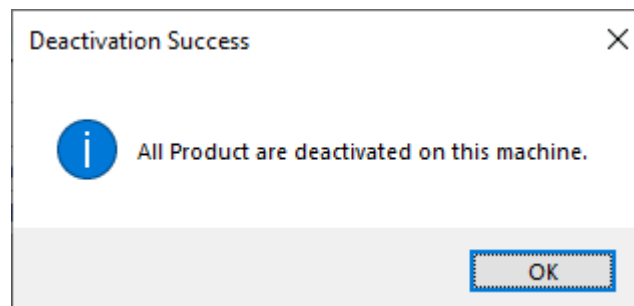
| Product                       | ExpiryDate | USPDate     |
|-------------------------------|------------|-------------|
| Commercial                    | permanent  | 31-Oct-2022 |
| CAMWorks Milling Professional | permanent  | 31-Oct-2022 |
| CAMWorks Solids P             | permanent  | 31-Oct-2022 |

☒ I have read the HCL Technologies [Privacy Policy](#) and agree to its terms and condition

**Deactivate My Products...** Close Help

**CAMWorks Product Deactivation Dialog box**

- xiv. The license manager mechanism will contact the license servers of HCL Technologies via the Internet and get all the products listed in the **List of Product(s) activated** list box deactivated.
- xv. Once this process is complete, the *Deactivation Success* modal window will be displayed. This modal window will display a status message indicating that all the previously active products have now been successfully deactivated on the machine. Click on the *OK* button of this modal window to close it.



**Deactivation Success**

**i** All Product are deactivated on this machine.

**OK**

**Deactivation Success Modal Window**

- xvi. The user interface will revert to the *CAMWorks Product Deactivation* dialog box. Click on the *Close* button at the bottom of the dialog box to revert to the *Server Settings* tab.



- xvii. Close the *CAMWorks License Manager* dialog box.
- xviii. Your *CAMWorks* license is now successfully deactivated.
- You can now shift the Floating Network Server License to another [License Server](#) of your choice by activating the license on that machine. This activation can be done automatically or manually.
- Based on your preferences, refer the following topics:
- [Step 1](#), [Step 2](#) and [Step 3](#) in [Chapter 3: Activating a Floating Network License Setup using Automatic Method](#)
  - [Step 1](#), [Step 2](#) and [Step 3](#) in [Chapter 6: Activating a Floating Network License Setup using Manual Method](#)
- xix. Once your *Floating Network Server License* is active and the *License Service* successfully running on your new [License Server](#), you need to enable client machines to access the license service. The steps involved are identical to the those for activating access on new installations. For details, refer the topic: [Step 4: Activating the License on Clients of the Floating Network](#) in [Chapter 3](#) of this document.

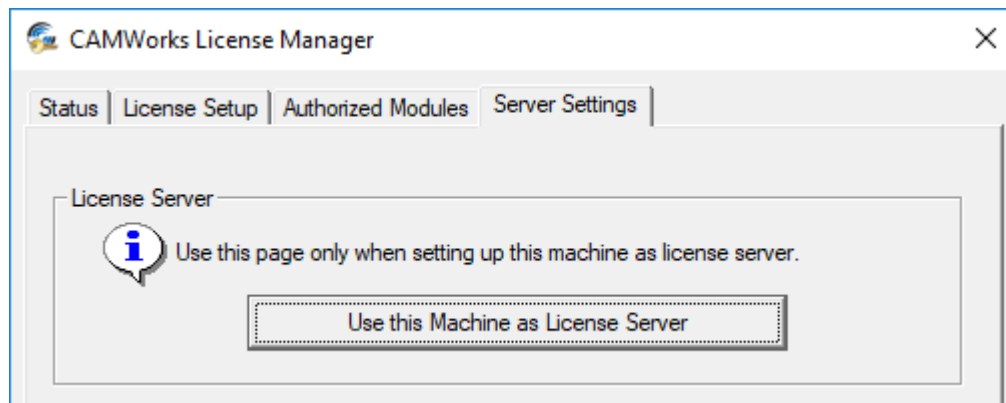


## 6. ACTIVATING A FLOATING NETWORK LICENSE SETUP USING MANUAL METHOD

Given in this chapter are the steps to activate a [Floating Network License Setup](#) using the [Automatic](#) option of [Online Activation](#) licensing method.

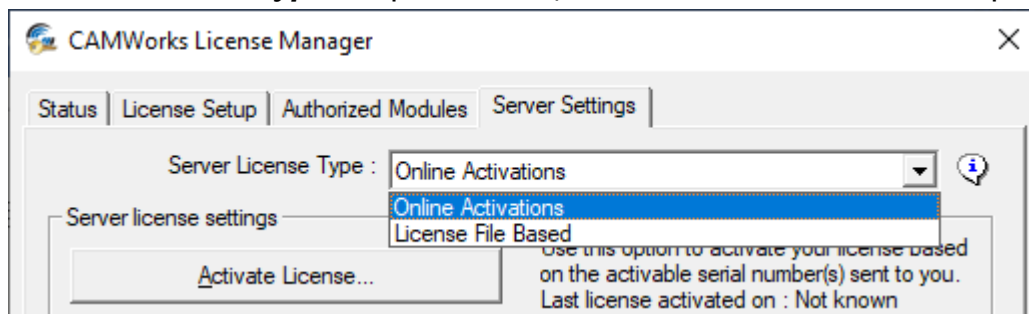
### Steps to Activate the Floating Network License Setup

- i. Ensure that the conditions listed in [Step 1](#) and [Step 2](#) of [Chapter 3](#) in this document are fulfilled.
- ii. On the [CAMWorks License Server](#), launch the [CAMWorks License Manager tool](#).
- iii. The *CAMWorks License Manager* dialog box will be displayed. Switch to the *Server Settings* tab.
- iv. Within the *License Server* group box, click on the **Use this machine as License Server** button.



**'Use this Machine as License Server' button in Server Settings Tab**

- v. In the **Server License Type** dropdown list, select **Online Activations** option.



**Select the 'Online Activations' Option for Server License Type**

- vi. Parameters associated with online activation of the *Floating Network Server License* will be displayed in this tab. In the *Server License Settings* group box under this tab, click on the **Activate License...** button.



## License Activation Using Online Activation Method

- vii. The **CAMWorks Product Activation** dialog box will be displayed. Select the **Manually via E-mail** option.
- viii. In the field provided below the label **Enter your Activation ID(s) and click on Add button**;, input the Activation ID provided to you.

**CAMWorks Product Activation Dialog Box**

- ix. Click on the **Add** button adjacent to this field. The Activation ID input by you will then be listed in the **Activation IDs to be activated** list box below the field.
- x. If you have multiple Activation IDs, then repeat steps ix. and x.
- xi. Place a check in the **I have read the HCL Technologies Privacy Policy and agree to its terms and conditions** check box.
- xii. Placing in the check in this checkbox activates the **Activate My Products...** button at the bottom of the dialog box. Click on this button.
- xiii. The **CAMWorks Product Activation - Manual Method Wizard** will be displayed. Provide your username and email ID and click the **Save** button.

**CAMWorks Product Activation - Manual Method Wizard**



- xiv. A modal window indicating that the file has been successfully generated and saved will be displayed. This message will also indicate the file path to the saved file. This license request file generated contains the Activation ID(s) to be validated and activated.
- xv. Email this license request file to [Register@camworks.com](mailto:Register@camworks.com).

CAMWorks Product Activation

1) Activation ID(s) which needs to be activated or deactivated

XXXX-XXXX-XXXX-XXXX-XXXX-XXXX-XXXX-XXXX

2) Press save to create a request file

Name\* : XYZ

Email-ID\* : XYZ@mail.com

Save...

3) Email the request to the following address to get a response file :

Register@camworks.com

OR Upload File on self service portal.  
(Login is required)  
[Click here to open portal in a web browser](#)

### CAMWorks Product Activation – Manual Method Wizard

- xvi. You will receive a *CAMWorks Response File (\*.cwlrc)* file via email within maximum one business day. Save this file on the machine on which you intend to activate the license.
- xvii. Click on the *Activate My Products...* command button in the *CAMWorks Product Activation* dialog box again to invoke the *CAMWorks Product Activation - Manual Method Wizard*.
- xviii. Click on the **Open...** button in this wizard to browse and select this *Response* file.

4) Press open to load the response file

Open...

If you have the response file then, select Activate My Products to proceed. In case if you do not wish to continue then, select Close. You can rerun the wizard at later time.

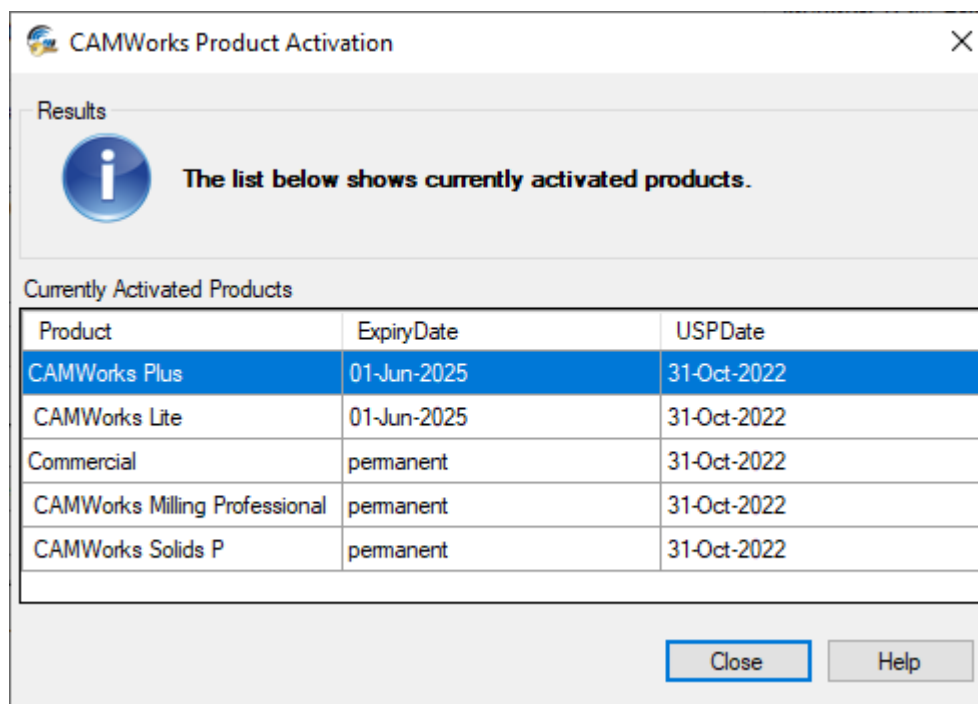
About Activate My Products... Close

### Bottom portion of the CAMWorks Product Activation – Manual Method Wizard



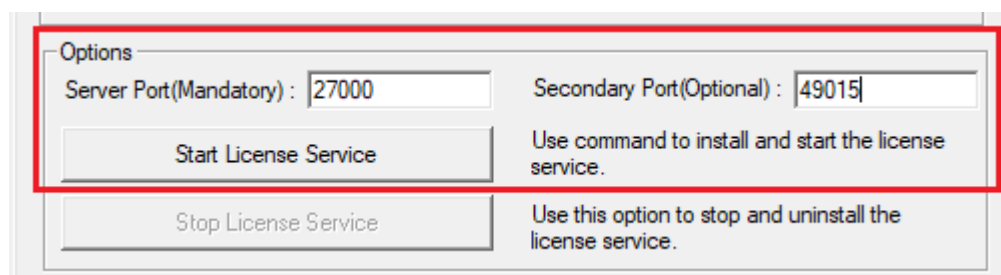
## License Activation Using Online Activation Method

- xix. Once this file is selected, click on the **Activate My Products...** button at the bottom of the wizard.
- xx. If successfully activated, the *CAMWorks Product Activation – Currently Activated Products* dialog box listing all the activated products will be displayed. This user interface will list each activated CAMWorks product, the expiry date of the product, and the expiry date of its *User Subscription Plan (USP)* in tabular format.



**CAMWorks Product Activation – Currently Activated Products Dialog Box**

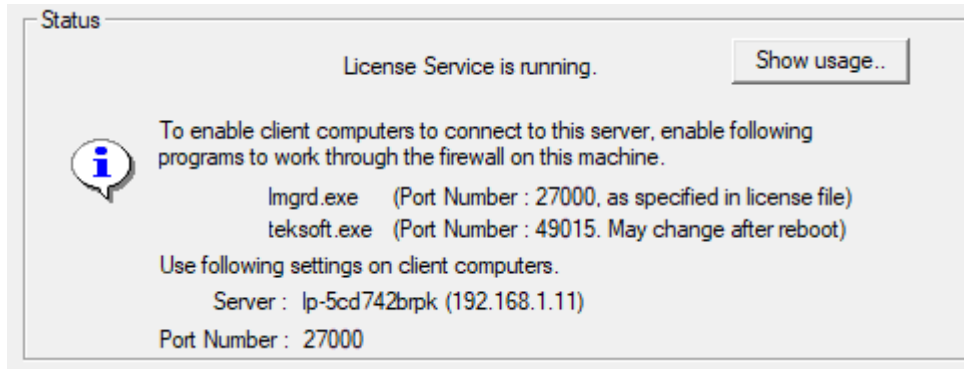
- xxi. Click on the *Close* button to close this user interface.
- xxii. The user interface will now revert to the *Server Settings* tab. Input the mandatory (primary) *Server Port number* and *Secondary Port number* (optional) in the fields provided within the *Options* group box of this tab.
- xxiii. Click on the *Start License Service* button within the *Options* group box of this tab.



**Options Group Box of Server Settings Tab**

- xxiv. If successfully activated, the *Status* group box at the bottom of the tab will indicate that the license service is now running.





**Message displayed in the Status Group Box when License Service is running successfully**

- xxv. Click on the *Apply* button at the bottom of the *CAMWorks License Manager* dialog box.

Your *CAMWorks* license is now successfully activated and the *CAMWorks License Service* is also running on your *CAMWorks License Server*.

- xxvi. The next step involves establishing license access to the *CAMWorks License Server* from the client machines. For detailed steps, refer: [Step 4: Activating the License on Clients of the Floating Network](#).

Once done, the activation of the *CAMWorks* license on your *Floating Network Setup* will be successfully completed. You can now run the *CAMWorks* application on all the Clients.



## **7. RENEWING/UPGRADING A FLOATING NETWORK SETUP USING MANUAL METHOD**

You need to reactivate your CAMWorks license when your license or [User Subscription Plan](#) expires or when you upgrade your license to include more CAMWorks modules.

Given in this chapter are the steps to reactivate your Floating Network Server License using the [Manual option](#) of the [Online License Reactivation Method](#).

### **Steps to Reactivate a Floating Network License using Manual Method**

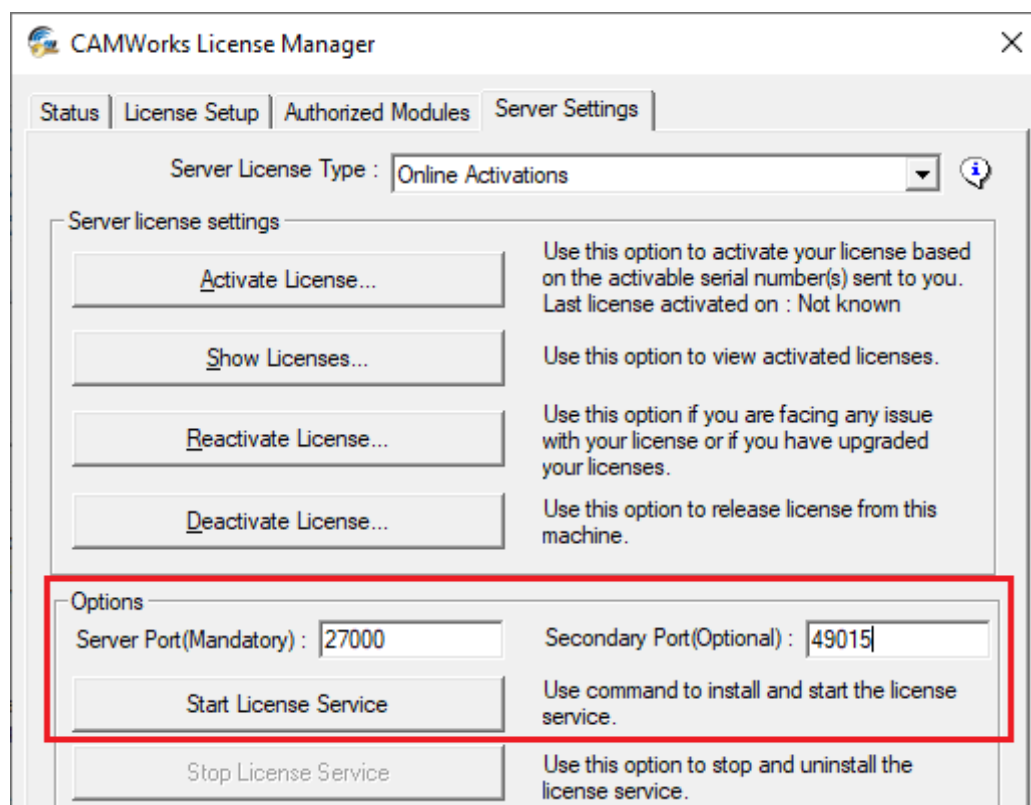
1. [Launch the CAMWorks License Manager tool](#). The *CAMWorks License Manager* dialog box will be displayed.
2. Switch to the *Server Settings* tab. Under this tab, select *Online Activations* as the *Server License Method*.
3. Observe that the *Status* group box indicates that the *CAMWorks License Service* is running. Click on the *Stop License Service* button within the *Options* group box of this tab. This action will stop and uninstall the active *CAMWorks License Service*.
4. A modal window stating that the License Service has been marked for removal and requesting you to close the License Manager for complete removal of the license service will be displayed. Click on the OK button within this modal to revert to the *Server Settings* tab.
5. Observe that the *Stop License Service* button is now disabled. Close the *CAMWorks License Manager* dialog box.
6. [Launch the CAMWorks License Manager tool](#) again. Switch to the *Server Settings* tab.
7. Observe that the *Reactivate Existing...* button is now enabled. Click on this button.
8. The *CAMWorks Product Reactivation* dialog box will be displayed. Select the *Manually via Email* option.
9. The ***Please select the Product(s) to be reactivated*** list box will display all the CAMWorks products currently active on the machine. The license expiry date, [User Subscription Plan \(USP\)](#) expiry date and associated *Activation ID* for each product will also be displayed.
10. In this list box, place a check against all the product entries whose licenses you wish to reactivate.



11. Place a check in the '***I have read the HCL Technologies Privacy Policy and agree to its terms and conditions***' check box.
12. Placing the check in this check box activates the ***Reactivate My Products...*** button at the bottom of the dialog box. Click on this button.
13. The *CAMWorks Product Reactivation - Manual Method* Wizard will be displayed. Input your user name and email ID and click the Save button.
14. The license manager mechanism will then generate a request file (in zip format) containing the *Activation ID(s)* to be reactivated. After successful generation of this file, a modal window indicating successful generation of the request file will be displayed. This modal window will also indicate the file path to the location on the drive where the Request file (in zip format) has been saved. Once you click the *OK* button in this modal window, it will close, and the user interface will revert to the *CAMWorks Product Reactivation - Manual Method* Wizard.
15. Email this generated Request file to [register@camworks.com](mailto:register@camworks.com).
16. You will receive a CAMWorks Response File (\*.cwlic) file via email within maximum one business day. Save this file on the machine on which you intend to reactivate the license.
17. [Launch the CAMWorks License Manager tool](#) again. Switch to the *Server Settings* tab.
18. Click on the *Reactivate Existing...* button under this tab.
19. The *CAMWorks Product Reactivation* dialog box will be displayed. Click on the *Reactivate My Products...* command button in this dialog box.
20. The *CAMWorks Product Reactivation - Manual Method* Wizard will be displayed. Click on the *Open...* button in this wizard to browse and select this CAMWorks Response file.
21. Once this file is selected, click on the *Reactivate My Products...* button at the bottom of the wizard.
22. If your products are successfully reactivated, then the modal window labelled *Reactivation Success* listing all the activated products will be displayed. Click on the *OK* button within this modal window to revert to the *CAMWorks Product Reactivation - Manual Method* Wizard.
23. Click on the *Close* button within this wizard to revert to the *CAMWorks Product Reactivation* dialog box.
24. Click on the *Close* button at the bottom of the dialog box to revert to the *Server Settings* tab.
25. Input the mandatory (primary) *Server Port number* and *Secondary Port number* (optional) in the fields provided within the *Options* group box of this tab.
26. Click on the *Start License Service* button within the *Options* group box of this tab. If successfully activated, the *Status* group box at the bottom of the tab will indicate that the license service is now running.



## License Activation Using Online Activation Method



**Options Group Box under Server Settings tab when 'Online Activations' Option is selected as the 'Server License Type'**

27. Click on the *Apply* button at the bottom of the *CAMWorks License Manager* dialog box.

28. Close the *CAMWorks License Manager* dialog box.

Your *CAMWorks* license is now successfully reactivated and the *CAMWorks License Service* is also running on your [CAMWorks License Server](#). Your [client machines](#) will be able to successfully access the reactivated floating network license on the [CAMWorks License Server](#) as the license service is successfully running on it (provided that the originally assigned port numbers were retained).



## 8. TRANSFERRING FLOATING NETWORK SERVER LICENSE USING MANUAL METHOD

The need to transfer your active *CAMWorks* license from one machine to another usually comes up when you upgrade your hardware or Windows systems.

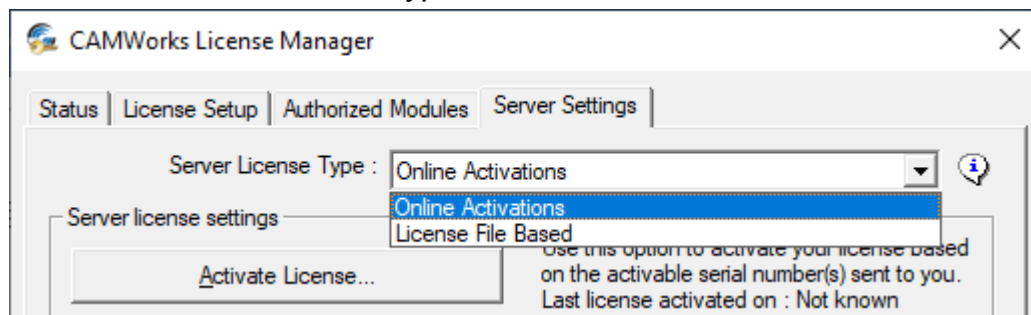
The *Online Deactivation/Activation* options provided within the [CAMWorks License Manager](#) tool allow you to deactivate your active *Floating Network License* on your current License Server and then transfer and activate that license on another system that you intend to designate as your new *CAMWorks License Server*.

This chapter covers the [Manual Method of License Deactivation](#).

(This chapter covers all the steps involved in transferring your CAMWorks Floating Network Server license from your current License Server to another system you intend to designate as your new CAMWorks License Server using the *Manual Method* of Online Deactivation/Activation.)

### Manual Method of License Deactivation and Activation

- i. On the machine designated as the CAMWorks License Server, [launch the CAMWorks License Manager tool](#).
- ii. The *CAMWorks License Manager* dialog box will be displayed.
- iii. Switch to the *Server Settings* tab. Under this tab, ensure *Online Activations* is selected as the *Server License Type*.

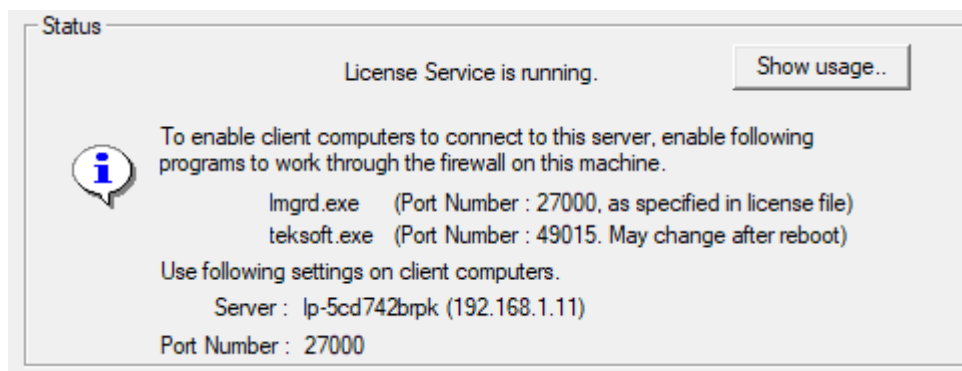


Select the 'Online Activations' Option for Server License Type

- iv. Observe that the *Status* group box indicates that the CAMWorks License Service is running.

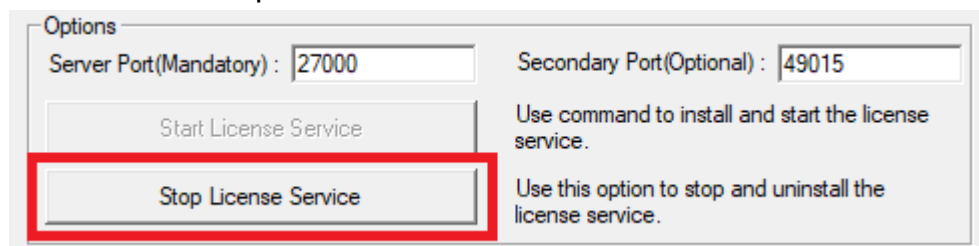


## License Activation Using Online Activation Method



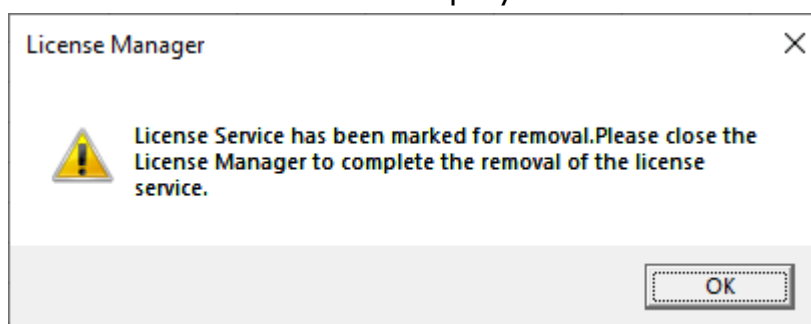
**Message displayed in the Status Group Box when License Service is running successfully**

- v. Click on the *Stop License Service* button within the *Options* group box of this tab. This action will stop and uninstall the active CAMWorks License Service.



**Click on the 'Stop License Service' Button within Options group box**

- vi. A modal window stating that the *License Service* has been marked for removal and requesting you to close the License Manager for complete removal of the license service will be displayed.

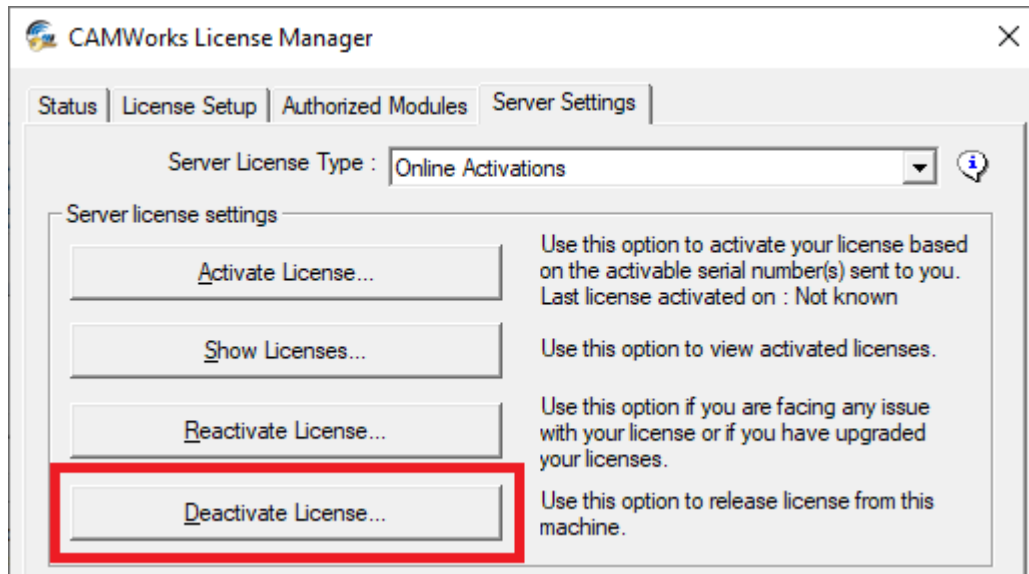


**Modal Window Displayed once the Command to Stop the License Service is Executed**

- vii. Once you click the *OK* button within this modal window, the user interface will revert to the *Server Settings* tab. Observe that the *Stop License Service* button is now disabled. Close the *CAMWorks License Manager* dialog box.
- viii. [Launch the CAMWorks License Manager tool again](#). Switch to the *Server Settings* tab.



- ix. Observe that the **Deactivate License...** button is now enabled. Click on this button.



Click on the 'Deactivate License...' Button under Server Settings Tab

- x. The *CAMWorks Product Deactivation* dialog box will be displayed. Select the **Manually via E-Mail** option.
- xi. All the currently activated Activation ID(s) on the system will be displayed in the *List of Products activated* list box.
- xii. Place a check in the **I have read the HCL Technologies Privacy Policy and agree to its terms and conditions** check box.
- xiii. Placing a check in this check box activates the **Deactivate My Products...** button at the bottom of the dialog box. Click on this button.
- xiv. The **CAMWorks Product Deactivation - Manual Method Wizard** will be displayed. Provide your username and email ID and click the **Save** button.





## License Activation Using Online Activation Method

CAMWorks Product Deactivation

1) Activation ID(s) which needs to be deactivated

XXXX-XXXX-XXXX-XXXX-XXXX-XXXX-XXXX-XXXX

2) Press save to create a request file

Username\*: xxxxx xxxxx

Email-ID\*: xxxxxx@xxx.com

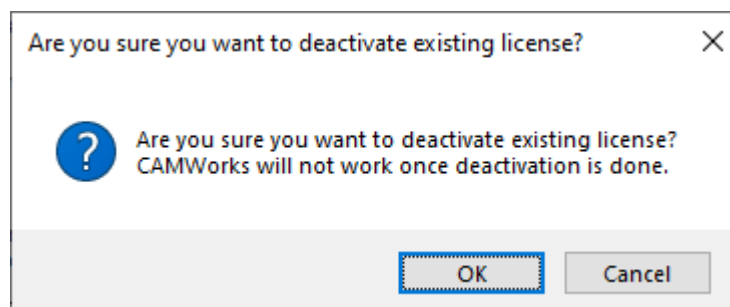
Save...

3) Email the request to the following address to get a response file : **GT-Register@camworks.com** OR Upload File on self service portal. ( Login is required )

[Click here to open portal in a web browser](#)

### CAMWorks Product Deactivation – Manual Method Wizard

- xv. A modal window prompting you to confirm whether you are sure about deactivating the license will be displayed. Click the OK button within this modal window.

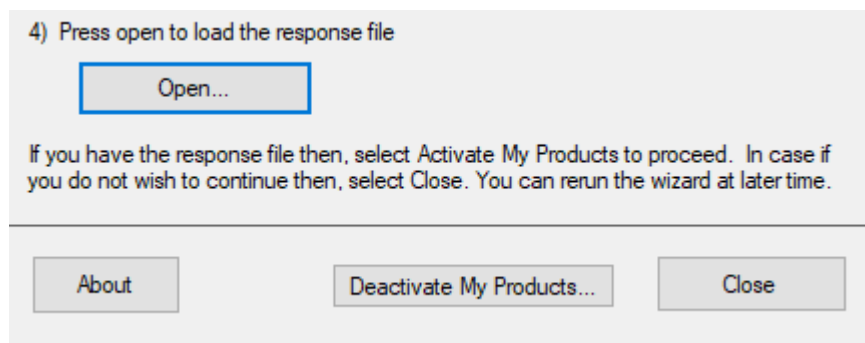


### Modal Window Prompting Confirmation for Deactivating CAMWorks License

- xvi. Once you click the OK button of the previous, the license manager mechanism will generate a request file (in zip format) containing the Activation ID(s) to be deactivated. After successful generation of this file, a modal window indicating successful generation of the request file for deactivating the license will be displayed.
- xvii. Email this license request file to [Register@camworks.com](mailto:Register@camworks.com).
- xviii. You will receive a *CAMWorks Response File (\*.cwlic)* file modal window via email within maximum one business day. Save this file on the machine on which you intend to deactivate the license.

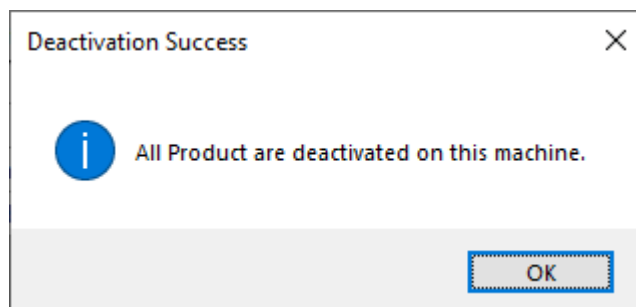


- xix. Click on the *Deactivate My Products...* command button in the *CAMWorks Product Deactivation* dialog box again to invoke the *CAMWorks Product Deactivation - Manual Method Wizard*.
- xx. Click on the **Open...** button in this wizard to browse and select this CAMWorks Response file.
- xxi. Once this file is selected, click on the *Deactivate My Products...* button at the bottom of the wizard.



Click 'Open' button to load the Response File and Deactivate the License

- xxii. Once successfully deactivated, the **Deactivation Success** modal window will be displayed. Click on the OK button of this modal window to close it.



Modal Window indicating Deactivation Success

- xxiii. The user interface will revert to the *CAMWorks Product Deactivation - Manual Method Wizard*. Click on the Close button within this wizard.
- xxiv. The user interface will now revert to the *CAMWorks Product Deactivation* dialog box. Click on the Close button within this dialog box.
- xxv. The user interface will revert to the *Server Settings* tab. Close the *CAMWorks License Manager* dialog box.
- xxvi. Your *CAMWorks* license is now successfully deactivated.  
You can now shift the Floating Network Server License to another machine of your choice by activating the license on that machine. This activation can be done automatically or manually.

Based on your preferences, refer the following topics:



## License Activation Using Online Activation Method

---

- [Activating Floating Network Server License on License Server using Automatic Method](#)
- [Activating Floating Network Server License on License Server using Manual Method](#)

Once your *Floating Network Server License* is active and the *License Service* successfully running on your new *CAMWorks License Server*, you need to enable client machines to access the license service. The steps involved are identical to the those for activating access on new installations. For details, refer the topic: [Activating Floating Network Server License on Client Computers](#).



## **APPENDIX A: CAMWORKS LICENSING INFORMATION**

Given in this appendix are all relevant details you need to know about *CAMWorks* licensing before you proceed with activating, renewing, or upgrading the license.

### **Types of CAMWorks License**

Based on single-user or multi-user requirements, the *CAMWorks* license can be activated either as a Nodelocked license (for single-user installation) or as a Floating Network Server License (for multi-user installation).

#### **1. The Nodelocked (Standalone) License**

A standalone license (node locked) authorizes the use of *CAMWorks* on a single Windows system.

To learn all the steps involved in activating the *Nodelocked (Standalone)* license, refer the following document that is present in the same folder as this current document: ***Nodelocked\_Online\_License\_Management\_Guide.pdf***.

#### **2. The Floating Network Server License**

The *Floating Network Server* license is ideal in environments where multiple copies of *CAMWorks* are to be run simultaneously on multiple *CAMWorks client* computers. One computer on such a network needs to be designated as the *CAMWorks License Server*. This computer will be used to submit the license request, install, and run the *CAMWorks License Service* and activate the *Floating Network Server* license. (All these activities are done via the [CAMWorks License Manager](#) tool.) Once the license is activated, it will function as the centralized system that provides licenses to client computers for running the [CAMWorks modules](#).

Floating Network Server licenses are supported for all Client-Server Setups where the client is connected to the *CAMWorks License Server* via a *Microsoft Computer Network* or *VPN (Virtual Private Network)*.

For details on how to activate a *Floating Network Server* license using the [Online License Activation Method](#), refer the following topics in this document:

- [Chapter 3: Activating a Floating Network License Setup Using Automatic Method](#)
- [Chapter 6: Activating a Floating Network License Setup Using Manual Method](#)

### **License Duration of the CAMWorks License**

The *CAMWorks* license can be either perpetual or time bound in nature.



### CAMWorks License of Perpetual Nature

The *CAMWorks* license you purchase from your Reseller is usually perpetual in nature. This means that the license will never expire, and you can continue using the *CAMWorks* application forever. However, note that you need to purchase a separate [User Subscription Plan \(USP\)](#) in order to receive latest updates for *CAMWorks* and to receive technical support.

For more details on *User Subscription Plan*, read [Appendix B: User Subscription Plan](#) of this document.

### CAMWorks License of Time-bound nature

In most cases, the *CAMWorks* license issued to you will be a time bound license. Such licenses are non-perpetual in nature and *CAMWorks* will not function after the expiry date of the license.

If you are running *CAMWorks* using a license which is time bound in nature, when fewer than 30 days remain for the license to expire, *CAMWorks* will display a message indicating the number of days left for the license to expire. If you want to renew your license, contact your *CAMWorks* Reseller. After renewing, you need to [reactivate your license](#).

For details on how to renew an expired [Floating Network Server](#) license, refer:

- [Chapter 4: Renewing/ Upgrading a Floating Network License Setup using Automatic Method](#)
- [Chapter 7: Renewing/ Upgrading a Floating Network License Setup using Manual Method](#)

## CAMWorks License Modes

When you purchase a *CAMWorks* license, the mode in which it is intended to be run is also embedded in the license. *CAMWorks* is currently supplied in Commercial, Educational and Instructor license modes. When *CAMWorks* fails to detect a valid license, it will run in [Demonstration Mode](#).

### Commercial Mode

The *Commercial* mode of the *CAMWorks* license is intended for commercial purposes. *CAMWorks* is fully functional in the *Commercial* mode.

### Educational Mode

The *Educational* mode of the *CAMWorks* software license is intended for non-commercial, educational use only. The *Educational* license mode may not be resold or used for commercial purposes. In the *Educational* mode version, *CAMWorks* is fully functional except for these following restrictions:



- CAMWorks data saved in files using the *Educational* mode license cannot be restored in a *Commercial* license mode.
- Post processing is disabled.
- The software may not be resold or used for commercial purposes.

### Instructor Mode

The *Instructor* mode of the CAMWorks software license is intended for purchase by educational institutes and to be used by Instructors. In the *Instructor* mode version, CAMWorks is fully functional except for these restrictions:

- CAMWorks data saved in files using the *Instructor* mode license cannot be restored in a *Commercial* license version. However, CAMWorks data saved in files using a *Commercial* mode license can be run on *Instructor* mode license.
- The software may not be resold or used for commercial purposes.

### Demonstration Mode

CAMWorks will run in *Demonstration* mode in the following cases:

- If a valid license has not been activated after installing CAMWorks.
- If the CAMWorks license expires
- When a valid CAMWorks license purchased is not detected by the [CAMWorks License Manager tool](#)
- When the license for the specific [CAMWorks modules](#) is not available for use on a [Floating Network](#) (as all the available licenses are in use by other *client* computers).

### Limitations of the Demonstration Mode

In *Demonstration* mode, CAMWorks is fully functional except for these restrictions:

- CAMWorks data saved in files cannot be restored in a *Commercial* licensed version.
- Post processing will be disabled, and NC code cannot be generated.

### Demonstration Mode when CAMWorks is Run as an Add-In in CAMWorks Solids

If you run CAMWorks as an Add-In within the CAMWorks Solids application, then you have a CAMWorks license that is configured to run [CAMWorks modules](#) as well as the CAMWorks Solids application. Once your license expires, you will not be able to run the CAMWorks Solids application without a valid CAMWorks license. Consequently, you cannot run CAMWorks in *Demonstration* mode as that requires the CAMWorks Solids application to be up and running.




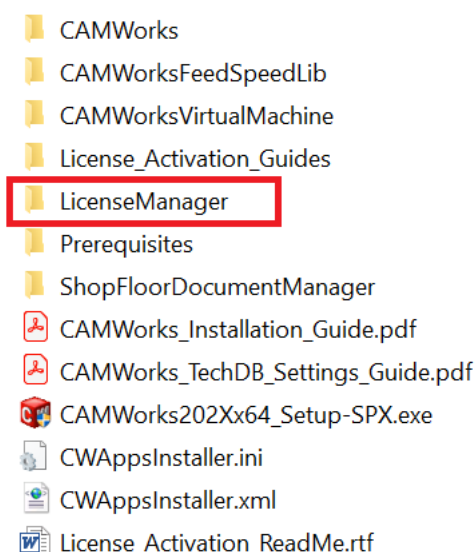
### Installing/Upgrading CAMWorks License Manager Tool

#### Automatically Installing/Upgrading CAMWorks License Manager Tool

The *CAMWorks License Manager* tool is automatically installed/upgraded along with the *CAMWorks* application when you run the *CAMWorks* Installer.

#### Manually Installing/Upgrading the CAMWorks License Manager Tool

1. From the downloaded **CAMWorks Installer Package**, copy the sub-folder **LicenseManager** to the machine on which this software program is to be installed.
2. After copying, open the *LicenseManager* folder.
3. Run the exe file named  **CWLicenseManager\_YYYYDDMM** within this folder.



**‘LicenseManager’ folder within CAMWorks Installer Package**

4. Follow the simple steps given in the *Installation Wizard* to complete the installation.

### Significance of Upgrading CAMWorks License Manager Tool on License Server

On any [Floating Network Setup](#), the *CAMWorks License Manager* tool gets automatically upgraded on the clients and License Server when the *CAMWorks* version installed on them is upgraded. However, on some [Floating Network Setups](#), the [License Server](#) is intended to serve purely as a centralized system providing licenses to client machines (i.e., there is no intention of using the License Server simultaneously as a client). In such cases, the *CAMWorks License Manager* tool needs to be manually upgraded on the License Server. Failure to do so may result in a version mismatch between the *CAMWorks License Manager* tool installed on the [License Server](#) and the clients. This mismatch may disrupt the clients from accessing the license on the Floating Network setup.





## **APPENDIX B: CAMWORKS MODULES**

The CAMWorks application is modular in nature i.e., depending on varied CNC machining requirements, it has separate modules for *2½ Axis Milling, 3 Axis Milling, Rotary Milling, Turning, Mill Assembly Machining, Machine Simulation*, etc.

When you purchase the CAMWorks application, you will be advised on the combination of CAMWorks modules best suited to fulfil your machining requirements. The CAMWorks license you receive and activate will be configured to run only the specific modules that you have purchased. When you run the CAMWorks application, only the user interfaces associated with the specific modules you purchased will be activated. For Floating Network Licenses that are multi-user in nature, the licenses for CAMWorks modules can be selectively activated or released back to the floating network on the client computers to make them available for other clients.

### **Topics covered in this appendix:**

- [Viewing the CAMWorks Modules you are licensed to run](#)
- [Selectively activating CAMWorks modules on a floating network](#)

## **Viewing the CAMWorks Modules you are licensed to run**

### **Viewing CAMWorks Modules in the CAMWorks License Info dialog box**

1. Launch CAMWorks as an Add-In within the SOLIDWORKS/CAMWorks Solids environment.
2. Click on the **Help** menu and select **CAMWorks 2022>>License Info**. The CAMWorks License Info dialog box will be displayed.
3. The **Modules** column of the License Info dialog box lists the CAMWorks modules you are licensed to run.
4. The **Available** column indicates the number of licenses currently available for each listed module.

For a [client](#) on a [floating network](#), the number indicates how many licenses are available for each module.

For example, if there are **20** licenses of a CAMWorks module available on a floating network and **3** of them are being used by client computers, then the Available column will display '**17**'.

- If the module is unchecked and the Available column displays '**0**', it indicates that no licenses of that specific module are available to the client for use as all of them are in use by other clients.
- If '**1**' or a higher number is displayed, it means that the license for that specific module is available for use.
- For a borrowed license, the Available column will display '**1**'.



## License Activation Using Online Activation Method

5. The **Update Licenses** button updates/refreshes the availability of modules on a Floating Network setup.

A check in this box indicates that the specific module will be selected for use when the current user launches CAMWorks.

A checked module indicates that this module is being used by the current user.

This number indicates the number of licenses available for the specific module on a floating network

Place a check next to a listed module in order to use it. On checking, the number in the Available column reduces by 1 and vice versa.

If the module is unchecked and the Available column indicates '0', then no licenses are currently available since all of them are in use.

**CAMWorks License Info**

License information

License version date : YYYYMMDD (DD-MMM-YYYY)

Support (USP) expiry date : YYYYMMDD (DD-MMM-YYYY)

License method : FlexLM Software License (Server)

License type : Commercial

Licensed modules

| Available | Module  | Start Up                            |
|-----------|---|-------------------------------------|
| 10        | <input checked="" type="checkbox"/> 2.5X Mill Limited               | <input checked="" type="checkbox"/> |
| 10        | <input checked="" type="checkbox"/> 2.5X Mill                       | <input checked="" type="checkbox"/> |
| 10        | <input checked="" type="checkbox"/> 2.5X Mill plus                  | <input checked="" type="checkbox"/> |
| 10        | <input checked="" type="checkbox"/> 3X Mill L1                      | <input checked="" type="checkbox"/> |
| 10        | <input checked="" type="checkbox"/> 3X Mill L2                      | <input checked="" type="checkbox"/> |
| 10        | <input checked="" type="checkbox"/> Turning                         | <input checked="" type="checkbox"/> |
| 10        | <input checked="" type="checkbox"/> Rotary milling                  | <input checked="" type="checkbox"/> |
| 10        | <input checked="" type="checkbox"/> Multi Function                  | <input checked="" type="checkbox"/> |
| 10        | <input checked="" type="checkbox"/> SubSpindle                      | <input checked="" type="checkbox"/> |
| 10        | <input checked="" type="checkbox"/> Mill/Turn                       | <input checked="" type="checkbox"/> |
| 10        | <input checked="" type="checkbox"/> CW Utilities                    | <input checked="" type="checkbox"/> |
| 10        | <input checked="" type="checkbox"/> Wire EDM                        | <input checked="" type="checkbox"/> |
| 10        | <input checked="" type="checkbox"/> 3X Undercut                     | <input checked="" type="checkbox"/> |
| 10        | <input checked="" type="checkbox"/> 4X Mill                         | <input checked="" type="checkbox"/> |
| 10        | <input checked="" type="checkbox"/> 5X Mill                         | <input checked="" type="checkbox"/> |
| 10        | <input checked="" type="checkbox"/> Machine Simulation - Legacy     | <input checked="" type="checkbox"/> |
| 10        | <input checked="" type="checkbox"/> Machine Simulation - Standard   | <input checked="" type="checkbox"/> |
| 10        | <input checked="" type="checkbox"/> Machine Simulation - Profession | <input checked="" type="checkbox"/> |
| 10        | <input checked="" type="checkbox"/> Machine Simulation - Premium    | <input checked="" type="checkbox"/> |
| 10        | <input checked="" type="checkbox"/> VoluMill 2.5X                   | <input checked="" type="checkbox"/> |
| 10        | <input checked="" type="checkbox"/> VoluMill 3X                     | <input checked="" type="checkbox"/> |
| 10        | <input checked="" type="checkbox"/> Additive Manufacturing          | <input checked="" type="checkbox"/> |
| 1         | <input checked="" type="checkbox"/> Posting                         | <input checked="" type="checkbox"/> |
| 0         | <input type="checkbox"/> Estimating                                 | <input checked="" type="checkbox"/> |

Select All Unselect All Update Licenses

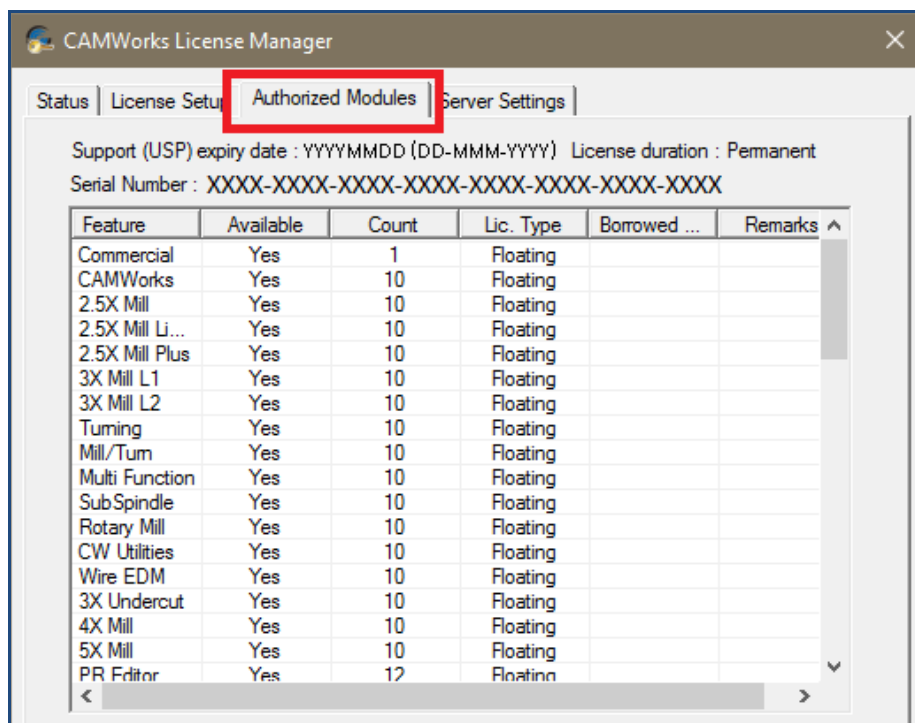
OK Help

CAMWorks Modules listed in CAMWorks License Info dialog box



### Viewing Info in Authorized Modules tab of CAMWorks License Manager Dialog box

1. On the client system, [launch the CAMWorks License Manager tool](#).
2. The *CAMWorks License Manager* dialog box will be displayed. Click on the *Authorized Modules* tab.



Authorized Modules tab of CAMWorks License Manager Dialog Box

#### Support (USP) Expiry Date

The [expiry date](#) of your current [User Subscription Plan](#) is indicated in the top left corner of this tab in YYYYMMDD format.

#### License Duration

The expiry date of your license is indicated in the top right corner of this tab in **YYYYMMDD** format. If you have a permanent license, then instead of an expiry date, the duration will be indicated as **Permanent**.

#### Feature column

- One of the rows in the *Feature* column indicates the [mode of your CAMWorks license](#) (Commercial/ Educational/ etc.)
- One of the rows in the *Feature* column indicates the name of the software product purchased (CAMWorks in this case). The numerical value in the *Count* field for this row entry indicates the total number of floating CAMWorks licenses available on the Floating Network Setup.



- All the remaining rows indicate the names of the *CAMWorks* modules you are licensed to run. The numerical value in the *Count* field for these row entries indicates the number of floating *CAMWorks* licenses currently available for use on the Floating Network Setup. (If you want to run a specific *CAMWorks* module on your client system you can do so only if at least one license of that module is available for use. This number of available licenses for a module is indicated in the *Count* field.)

### Available column

- **Yes** in the **Available** column indicates that the specific module is available for use.
- **No** in the **Available** column indicates that the specific module is not available for use as it is currently being used by other clients on the floating network. (The *Count* column field will display '0' to indicate that all the licenses for the module are currently in use.)

### Count column

- For a floating network license, the *Count* column indicates the number of licenses currently available for use for the specific module listed in the *Feature* column. For example, if you have purchased 20 licenses for a module and 13 of them are currently in use, then the *Count* column will indicate the number '7'. If all licenses are being used, the column will display '0'.
- On a floating network license, if the license for a specific *CAMWorks* module has been borrowed by the client, then the *Count* column will display **Uncounted** for that specific module as long as the license stands borrowed. Note that this will be displayed only on the client computer borrowing the module and not on other client computers.

### Lic. Type column

The **Lic. Type** column indicates whether the license for a specific module is *Node-locked* or *Floating* in nature. If a client has borrowed the license for a *CAMWorks* module on a floating network, then the **Lic. Type** column will indicate *Node-locked* on that specific client machine.

## Selectively Activating CAMWorks Modules

### The need to selectively activate CAMWorks Modules

For a floating network license, multiple licenses of various *CAMWorks* modules are present. On occasions when the number of users exceeds the number of licenses available, you may need to release a *CAMWorks* module which is currently active on your machine to another client on the floating network. For example, a situation where there are 5 clients and only 4 licenses of a



CAMWorks module available. In such cases, the need to selectively activate CAMWorks modules arises.

### Selectively activating CAMWorks Modules on a Floating Network

On a Floating Network setup, the licenses for CAMWorks modules can be selectively activated or released back to the floating network on the client computers. This is done by using the *CAMWorks License Info* dialog box.

The *CAMWorks License Info* dialog box is opened by clicking on the **Help** menu of *SOLIDWORKS/CAMWorks Solids* menu bar and selecting **CAMWorks 2022>>License Info...** from the dropdown menu.

#### Activating a CAMWorks Module

To activate the license for a specific module on a [client](#) on the [floating network](#), open the *CAMWorks License Info* dialog box. All the modules are listed in the column labelled **Module**. To access the functions associated with a listed module, place a check in the box to the left of the desired module name in this column and click the **OK** button.

Note that you can check the box only if a license for that module is available else the Module name will be grayed out. Observe that when you select a CAMWorks module, the number in the **Available** column for that specific module reduces by 1.

#### Automatically activating CAMWorks Modules when CAMWorks is launched

To activate the desired CAMWorks modules whenever you launch CAMWorks, open the *CAMWorks License Info* dialog box. Place a check in the box in the **Start Up** column corresponding to the desired CAMWorks module name and then click the **OK** button. Use the **Select All** button to select all the listed modules for Start Up and the **Unselect All** button to unselect modules that were selected in the *Start Up* column. The settings in the *CAMWorks License Info* dialog box will be applied whenever you launch CAMWorks.

When the CAMWorks application is launched, if the licenses for one or more of the modules selected for *Start Up* are not available, then CAMWorks displays the message: **One or more floating licenses that were requested are not available.**

#### To release a CAMWorks Module back to the Floating Network

Remove the check in the box to the left of the CAMWorks module name in the **Module** column and click the **OK** button. Observe that when you uncheck a CAMWorks module, the number in the **Available** column for that specific module increases by 1.

The CAMWorks modules will also be returned to the Floating Network whenever you close the CAMWorks application. Note that, however, a borrowed license will not be returned to the network. A borrowed license can be returned before its due date only by using the *CAMWorks License Manager* tool.



## **APPENDIX C: USER SUBSCRIPTION PLAN**

### **Enrolling for a User Subscription Plan**

When you purchase the *CAMWorks* license for the first time from a *CAMWorks* Reseller, you can opt to enroll you for a *User Subscription Plan* for a specific duration by paying an applicable fee.

### **Benefits of User Subscription Plan**

Being enrolled in the *CAMWorks User Subscription Plan* has the following benefits:

- ➔ **Receiving updates:** It allows you to keep your *CAMWorks* application up to date with the new features and performance improvements of *CAMWorks* released in the form of *CAMWorks* Releases and Service Packs.
- ➔ **Technical Support:** You will receive technical support for all issues with respect to *CAMWorks* and associated utilities.

Once your USP expires, you will no longer receive updates or support. Ensure that you repurchase an appropriate *User Subscription Plan* from your *CAMWorks* Reseller to continue receiving technical support and updates. This helps to keep your *CAMWorks* system up to date with new features and performance improvements.

---

#### **Note:**

**The *CAMWorks* license you purchase is usually perpetual in nature. However, the *User Subscription Plan (USP)* has a fixed duration. You need to repurchase a USP after your current plan expires.**

---

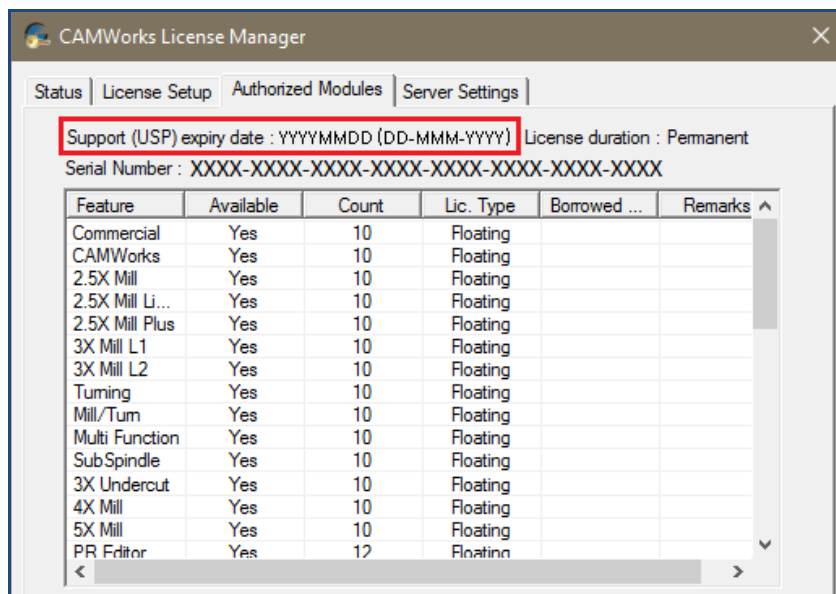
### **Viewing the Expiry Date of your User Subscription Plan**

You can verify the expiry date of your current *User Subscription Plan* using one of the following methods:

#### **Method 1: Viewing USP Expiry Date in CAMWorks License Manager**

1. Launch the ***CAMWorks License Manager*** tool on the client computer.  
(*Start menu>>Programs>>CAMWorks License Manager>>CW License Manager*)
2. Click on the ***Authorized Modules*** tab. The ***Support (USP) expiry date*** at the top left-hand side of this tab indicates the expiry date of the *User Subscription Plan* in YYYYMMDD format.

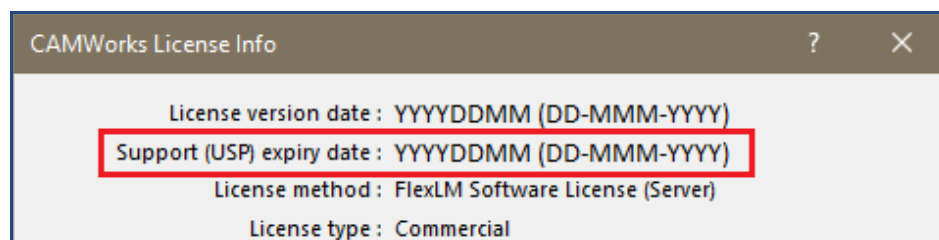




The Authorized Modules tab of the CAMWorks License Manager Dialog box

### Method 2: Viewing Expiry Date of USP in License Info dialog box

1. Launch CAMWorks as an Add-In within the SOLIDWORKS/ CAMWorks Solids environment.
2. Click on the **Help** menu and select **CAMWorks 2022>>License Info ...**. The CAMWorks License Info dialog box will be displayed. The **Support (USP) expiry date** at the top left of this dialog box indicates the expiry date of your User Subscription Plan.



'Support (USP) Expiry Date' in the License Info Dialog Box

### Significance of the Expiry Date of your User Subscription Plan

The *User Subscription Plan (USP)* that you purchase is for a fixed duration. After its expiry, you need to re-enroll for a fresh *User Subscription Plan*.

If you have an active USP, you can download and install the latest CAMWorks Releases and Service Packs. Hence, the expiry date of your *User Subscription Plan* assumes significance.

- If your *Support (USP) expiry date* is a date later than the current date, then it indicates that your *User Subscription Plan* is active.
- If the *Support (USP) expiry date* is a date prior to the current date, then it indicates that your *User Subscription Plan* has expired.





## License Activation Using Online Activation Method

- You can install those *CAMWorks* versions which have a *License Version* date prior to or the same as the *Support (USP)* expiry date.
- When there are only 30 days or less remaining for your *User Subscription Plan* to expire, a **Reminder message** will be displayed when you load *CAMWorks*. This message indicates the number of days remaining for your *User Subscription Plan* to expire.
- In order to update an existing *CAMWorks* installation to a newer Service Pack, you must currently be enrolled in a *CAMWorks User Subscription Plan*. If your *User Subscription Plan* has expired, you need to renew your *User Subscription Plan* and then [reactivate your Activation IDs](#). For details on how to reactivate your Activation IDs for a Floating Network Server license, refer [Chapter 4](#) and [Chapter 7](#) of this document.

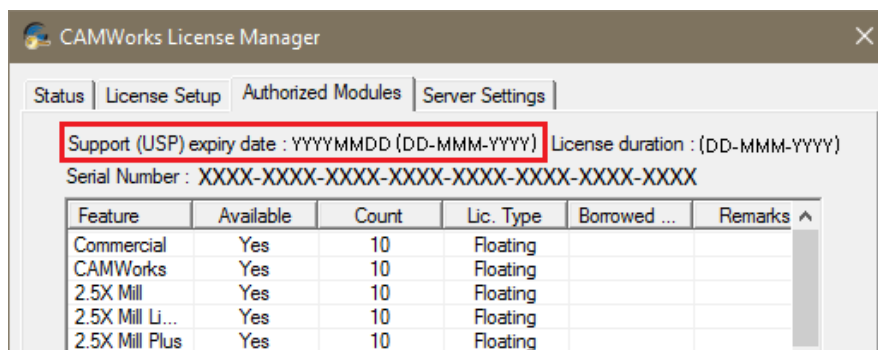
### Correlation Between USP Expiry Date and License Expiry Date

- The **License duration** field at the top right corner of the **Authorized Modules** **tab** in the *CAMWorks License Manager* dialog box indicates whether your *CAMWorks* license is perpetual or time-bound in nature.
- If your *CAMWorks* license is [perpetual](#) in nature, then the **License duration** will be displayed as '**Permanent**'.
- If your *CAMWorks* License is [time-bound](#) in nature, then the expiry date of your license will be displayed in the **License duration** field in **DD-MMM-YYYY** format.

#### Note:

- If your *User Subscription Plan* expires (indicated by the Support (USP) expiry date), you can still continue using the licensed module of *CAMWorks* till the expiry date of your license indicated by the License Duration date).
- If your *CAMWorks* license is perpetual in nature and your *User Subscription Plan* expires, then you can use the licensed modules of the currently installed *CAMWorks* version in perpetuity.

However, in both the above cases, you can no longer avail the benefits associated with the *User Subscription Plan* unless you renew the plan.



The Authorized Modules tab of the CAMWorks License Manager Dialog Box



## **APPENDIX D: CHECKING THE LICENSE VERSION DATE**

### **License Version Date of CAMWorks Version and its Significance**

Geometric Americas, Inc. periodically releases new CAMWorks versions in the form of Service Packs. Every CAMWorks version released has a *License Version Date* associated with it. This *License Version Date* indicates whether you are eligible to use the newly released CAMWorks version or not.

- If the *License Version Date* associated with a CAMWorks version is lower than the expiry date of the [User Subscription Plan](#) (USP) associated with your CAMWorks license, then you are eligible to run and use the CAMWorks application. (To view the [expiry date](#) of your *User Subscription Plan*, refer the topic: [Viewing the Expiry Date of your User Subscription Plan](#) in [Appendix C](#) of this document.)
- If the *License Version Date* associated with a CAMWorks version is later than the expiry date of the [User Subscription Plan](#) (USP) associated with your CAMWorks license, then you are not eligible to run the CAMWorks application. You may download and install the CAMWorks version but won't be able to run CAMWorks unless a license with a renewed [User Subscription Plan](#) (USP) is activated.

### **Illustrative Example to indicate eligibility to run a CAMWorks version based on License Version Date:**

If the *License Version Date* of the new version of CAMWorks is *February 15, 2022 [20220215]* and the *Support (USP) expiry date* of the CAMWorks license is *April 20, 2022 [20220420]*, then you are eligible to install and run the new version as the *License version date* is a date prior to the USP expiry date.

### **Viewing the License Version Date associated with a CAMWorks Version**

You can view the *License Version Date* associated within a CAMWorks version using one of the following methods:

#### **1. Viewing License Version Date in CAMWorks ReadMe File**

The *License Version date* of a CAMWorks version is mentioned in the *ReadMe* file.

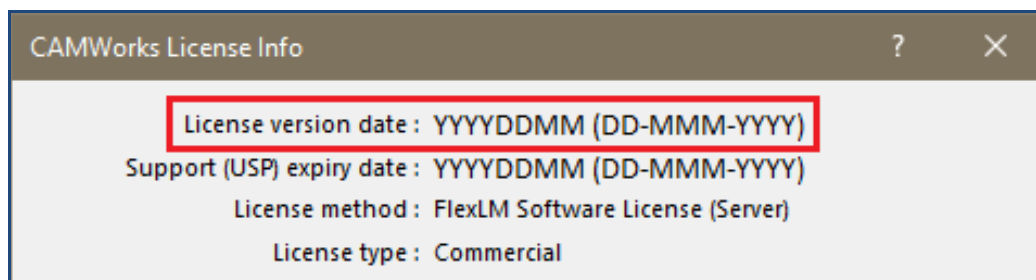
The *ReadMe* file for the version installed on your system can be accessed by selecting:

**<Drive>:\Program Files \CAMWorks2022x64 \CAMWorks\_VC141\Lang\English\  
Manuals\ReadMe**



### 2. Viewing License Version Date in CAMWorks License Info Dialog Box

- i. Load CAMWorks as an Add-In within the SOLIDWORKS/CAMWorks Solids environment.
- ii. Click on the **Help** menu and select *CAMWorks 2022>>License Info ...*
- iii. The *CAMWorks License Info* dialog box will be displayed. The **License version date** is given at the top of this dialog box.



**'License Version date' in the License Info Dialog Box**