

## CAMWorks ShopFloor will take your shop floor into the **21st century**

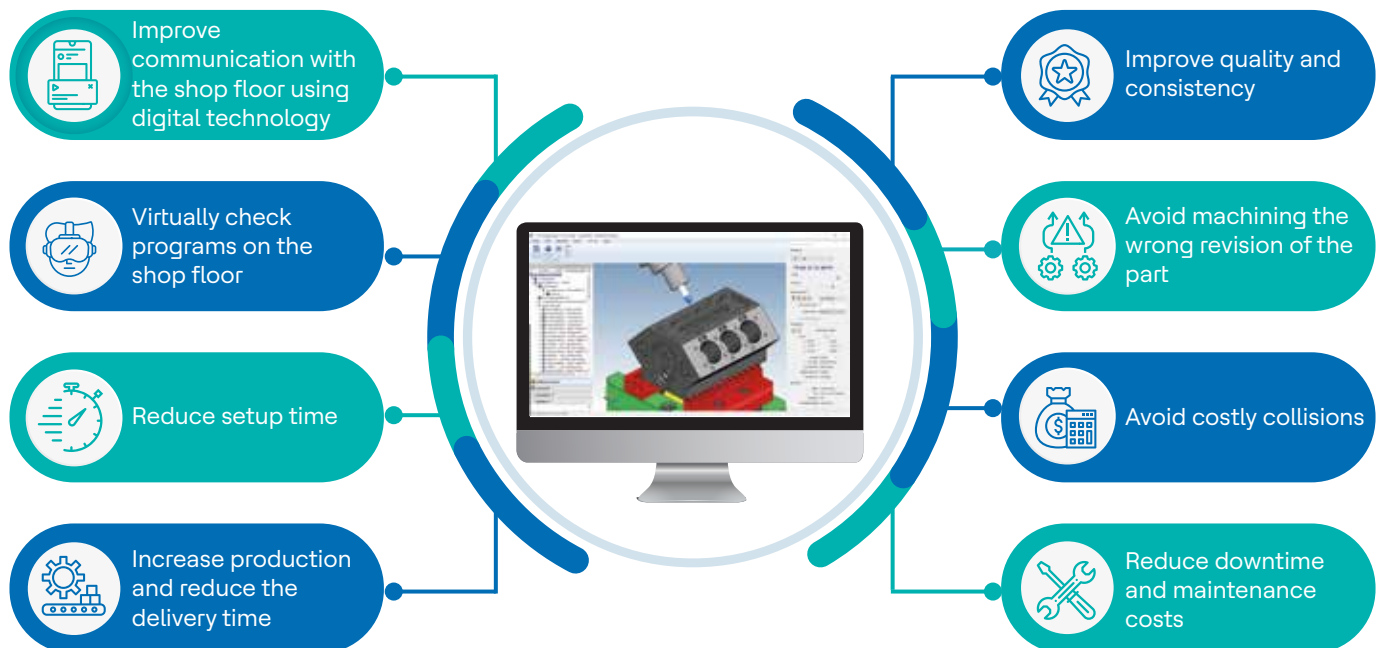
HCL CAMWorks



CAMWorks ShopFloor provides state-of-the-art digital tools for machinists to leverage digital manufacturing data, reducing errors and improving communication between CNC programmers and shop floor machinists.

This allows companies to move beyond traditional methods and meet paperless Smart Manufacturing and Industry 4.0 initiatives, as well as improve quality, increase productivity and reduce the number of needed CAD/CAM software licenses.

### CAMWorks ShopFloor benefits



## Smart Manufacturing – Industry 4.0 paperless digital container

CAMWorks ShopFloor makes all the manufacturing data available to the shop floor in a digital format, under one single interface.

### CAMWorks ShopFloor gives you tools to be competitive by utilizing today's digital technology

- 3D viewing of the part or assembly model of the setup
  - Rotate, zoom, pan and section view the model
  - View, search and filter MBD & PMI Data
  - Take linear, radial, angular, and area measurements
- Digital setup sheets & tool lists
- Step-through simulation for each operation or the entire program
- Full toolpath simulation
- Robust CNC editor with back-plotting



### Comparison of collaboration process with & without CAMWorks ShopFloor

Functionalities	Current collaboration process without CAMWorks ShopFloor	Collaboration process with CAMWorks ShopFloor Application
Step through Toolpath	✗	✓
Toolpath Simulation	✗	✓
Setup Sheets	✓	✓
3D View of the part model	✗	✓
Navigating the part model using view options such as Rotate, Zoom, Pan, Section Views, etc.	✗	✓
Dimensional information (GD&T) and Annotations of the part model	✗	✓*
Viewing and editing G-code	✓ (Only 3rd Party Editors)	✓ (With inbuilt CAMWorks NC Editor)
View impact of editing G-code	✗	✓

\* Dimensional information and annotations are available only for the native part models created in SOLIDWORKS.



For more information:  
[camworks.inquiries@hcl.com](mailto:camworks.inquiries@hcl.com)  
<https://www.camworks.com>  
US: +1.480.367.0132  
Europe: +49.1727874221  
APAC: +91.22.67056715/ + 91.94.23004902

#### About HCLSoftware

HCLSoftware develops, markets, sells, and supports product families in the areas of Digital Transformation, Data, Analytics & Insights, AI & Automation and Enterprise Security platforms. HCLSoftware is the cloud-native solution factory for enterprise software and powers millions of apps at more than 20,000 organizations, including more than half of the Fortune 1000 and Global 2000 companies. HCLSoftware's mission is to drive ultimate customer success with its IT investments through relentless product innovation.