

# HCLSoftware



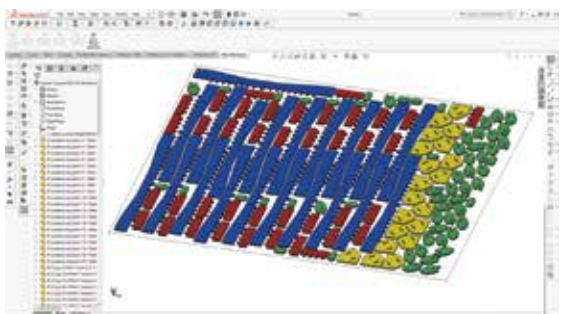
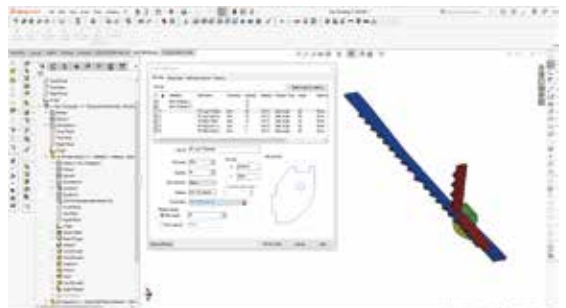
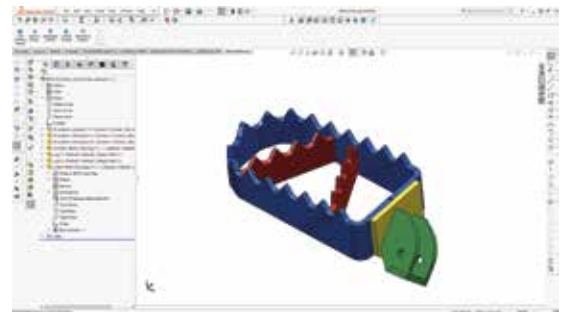
## CAMWorks NESTINGWorks for design, fabrication, and manufacturing

HCL CAMWorks

NESTINGWorks is a fully associative SOLIDWORKS® Add-In for nesting SOLIDWORKS Parts and Assemblies directly inside SOLIDWORKS. Using NESTINGWorks you can maximize material usage, minimize scrap, and increase material yield and production. With single dialogue box ease-of-use and advanced nesting capabilities, it makes perfect sense to use NESTINGWorks to nest SOLIDWORKS Parts and Assemblies for material optimization and CNC manufacturing of products made from sheets of material.

### NESTINGWorks at a Glance

- Seamlessly runs inside SOLIDWORKS, providing full associativity to SOLIDWORKS parts, so when parts change, nested sheets update
- Automatically nests parts, assemblies, or folders of parts – allowing you to work seamlessly without changes to existing workflow
- Provides single dialogue box integration for a shortened learning curve
- Automatically flattens folded parts
- Nests parts using true-shape, not simple patterns based on part extents
- Includes many advanced features such as Grain Direction selection, automatic remnant generation, and part-in-part nesting
- Can be leveraged as a design tool to assist in design for manufacturing (DFM), prototype nesting, as well as preparation for downstream manufacturing



NESTINGWorks can be used for nesting sheet metal components as well as parts and assemblies made from composites, wood, fabric, and many other materials. It produces the maximum number of parts from any standard or custom sheet material. Because it's fully integrated in SOLIDWORKS, if parts change, the nested sheets will update as well.



## NESTINGWorks key benefits

- **Automate the Nesting Process** – leveraging the latest technology
- **Optimize Material Usage** – true-shape nesting, automatic remnant generation, and part-in-part nesting
- **Reduce Scrap** – get the highest possible yield out of every piece of material and remnant
- **SOLIDWORKS Integration** – to optimize workflow and eliminate the need for additional software programs
- **Immediate Implementation** – Single dialog box design makes NESTINGWorks easy to learn and use

