



License Activation Using Hardware Dongle



This document details how to activate and manage your CAMWorks license using Hardware Dongle Based Licensing.

Disclaimer

Geometric Americas, Inc. (a subsidiary of HCL Technologies Ltd.) makes no warranties, either express or implied with respect to this manual. Geometric Americas, Inc. reserves the right to revise and improve products as it sees fit, and to revise the specifications and information contained herein without prior notice. Due to continuing product development, specifications and capabilities described in this manual are subject to change without notice.

Trademarks

The following and other product names and corporate references herein are registered or proprietary trademarks of their respective owners.

CAMWorks® is a registered trademark of Geometric Americas, Inc.

SOLIDWORKS® is a registered trademark of Dassault Systèmes SOLIDWORKS Corp.

FeatureManager™ is a trademark owned jointly by DS SOLIDWORKS and Bentley Systems, Inc.

All other brands and names are property of their respective owners.



Copyright © 2022 Geometric Americas, Inc. All Rights Reserved.



Product Version: CAMWorks 2022 SP2



TABLE OF CONTENTS

1. CAMWorks License Activation Overview.....	5
Procuring the CAMWorks License	5
Information Covered in this Manual.....	5
CAMWorks Licensing Information	5
Hardware Dongle	5
Hardware Dongle License Driver (Sentinel Driver 7.6.9)	6
Installing the Hardware Dongle License Driver (Sentinel Driver 7.6.9)	6
CAMWorks License Manager (Software Tool)	6
Installing the CAMWorks License Manager Tool	7
Launching the CAMWorks License Manager Tool with Admin Rights	7
Upgrading the CAMWorks License Manager Tool.....	8
The Key Manager Tool.....	8
Installing the Key Manager Tool	8
Launching the Key Manager Tool with Admin-level Rights.....	8
User Subscription Plan.....	9
License Version Date	9
2. Activating Nodelocked License Using Hardware Dongle.....	10
License File for Hardware Dongle (*.cod file).....	10
Pre-Requisites	10
Activating/Updating the License for Hardware Dongle.....	11
Activating Hardware Dongle License using Key Manager	12
Activating/Updating the Hardware Dongle License using Key Manager	12
Viewing Hardware Dongle Related Information using Key Manager	13
Using the Hardware Dongle	14
Reactivating (Renewing) the Hardware Dongle License.....	14
Renewing the Hardware Dongle License using CAMWorks License Manager.....	14
Renewing the Hardware Dongle License using Key Manager.....	14
Appendix A: CAMWorks Licensing Information	15
License Duration of the CAMWorks License.....	15
CAMWorks License of Perpetual Nature	15
CAMWorks License of Time-bound nature	15
CAMWorks License Modes	15
Commercial Mode.....	15
Educational Mode.....	16
Instructor Mode.....	16
Demonstration Mode	16
CAMWorks Modules.....	17



Viewing the CAMWorks Modules you are licensed to run	17
Viewing Hardware Dongle Related Information using Key Manager Tool	18
Appendix B: User Subscription Plan	21
Enrolling for a User Subscription Plan.....	21
Benefits of User Subscription Plan.....	21
Viewing the Expiry Date of your User Subscription Plan	21
Significance of the Expiry Date of your User Subscription Plan.....	23
Correlation Between USP Expiry Date and License Expiry Date.....	24
Appendix C: Checking the License Version Date.....	25
License Version Date of CAMWorks Version and its Significance.....	25
Viewing the License Version Date associated with a CAMWorks Version.....	25
Troubleshooting A: License Activation	27
Valid License is not detected when CAMWorks is launched	27
Troubleshooting B: Licensing Issues for Hardware Dongle Licensing..	30
1. Verify whether the Dongle is Installed Correctly	30
2. Check the CAMWorks License Manager for Incorrect Option Settings.....	30
3. Check the Communication Link between Computer and Dongle	30



1. CAMWORKS LICENSE ACTIVATION OVERVIEW

Procuring the CAMWorks License

Geometric Americas, Inc. sells products and modules under the CAMWorks suite either directly or through a worldwide network of **Value-Added Resellers (VARs)**. Users may choose between single user licenses (also alternatively referred to as *Standalone* or *Nodelocked* licenses) or multi-user licenses (henceforth referred to as *Floating Network Server* licenses in this text).

Information Covered in this Manual

After downloading and installing the CAMWorks application, the next step is to activate your license.

This document provides information on activating a CAMWorks single-user (Standalone/Nodelocked) license using the [Hardware Dongle Licensing Method](#).

- For info on activating and managing a *Floating Network Server* license using *Online Activation* method, refer the following document present in the same folder as this document:

Floating_Network_Online_License_Management_Guide.pdf.

- For info on activating and managing a Nodelocked (Standalone) license using *Online Activation* method, refer the following document present in the same folder as this document:

Nodelocked_Online_License_Management_Guide.pdf.

CAMWorks Licensing Information

Before you activate your license, you must possess a basic understanding of the licensing related information such as the license type, license duration, license mode, etc. For details, we recommend that you refer to [Appendix A: CAMWorks Licensing Information](#) of this document.

Hardware Dongle

A dongle (also referred to as a **key** or **security block**) is a small hardware device that fits on the USB connector/port of the computer. A license file that authorizes the use of specific CAMWorks modules and products resides within this device. When plugged into the USB port of any Windows system on which the CAMWorks application and associated programs are installed, it authorizes the use of those applications on that system (provided the licensing settings on that system are configured to read the Hardware dongle). This licensing method can be used only for Nodelocked (single user) licensing.



To use the Hardware Dongle licensing method, the software tools [Hardware Dongle License Driver](#) and [CAMWorks License Manager](#) are required.

To learn how to activate the standalone license using Hardware Dongle, read: [Chapter 2: Activating Nodelocked License using Hardware Dongle](#).

Hardware Dongle License Driver (Sentinel Driver 7.6.9)

When using a [Hardware Dongle device](#) for CAMWorks licensing, a driver software is required to enable the CAMWorks application to read the license file within the dongle. This driver facilitates the detection and activation of the Hardware Dongle on your system. Without this driver, CAMWorks cannot read the dongle and will get launched in [demonstration mode](#) when run as an Add-In within SOLIDWORKS. If launched as an Add-In within CAMWorks Solids, then it will fail to launch.

Once installed, the driver works in the background enabling the CAMWorks application to read the license file within the Hardware Dongle device plugged into the USB port of the system.

Installing the Hardware Dongle License Driver (Sentinel Driver 7.6.9)

The *Hardware Dongle License Driver* is always automatically installed when you install CAMWorks. Alternatively, you can download and install the **Sentinel Driver 7.6.9** version as follows:

1. Open the website www.camworks.com and login using the **Username** and **Password**.
2. When you successfully login, click on the link for **Downloads Area**.
3. Once this webpage is displayed, click on the link for **Miscellaneous Downloads**.
4. The [Miscellaneous Files Downloads](#) webpage will be displayed. Click on the [Sentinel hyperlink](#). This takes you to the section of the webpage for downloading the **Complete Sentinel Protection with USB Driver ver. 7.6.9** installer.
5. Download this installer to install this program.
6. Install this program once downloaded.

CAMWorks License Manager (Software Tool)

The *CAMWorks License Manager* software tool is used to activate the license as well as to manage its the licensing mechanism. If you are using a [Hardware Dongle](#), you need the *CAMWorks License Manager* to activate/update your Hardware Dongle License.



Installing the CAMWorks License Manager Tool

The *CAMWorks License Manager* tool is automatically installed/upgraded along with the *CAMWorks* application when you run the *CAMWorks* Installer.

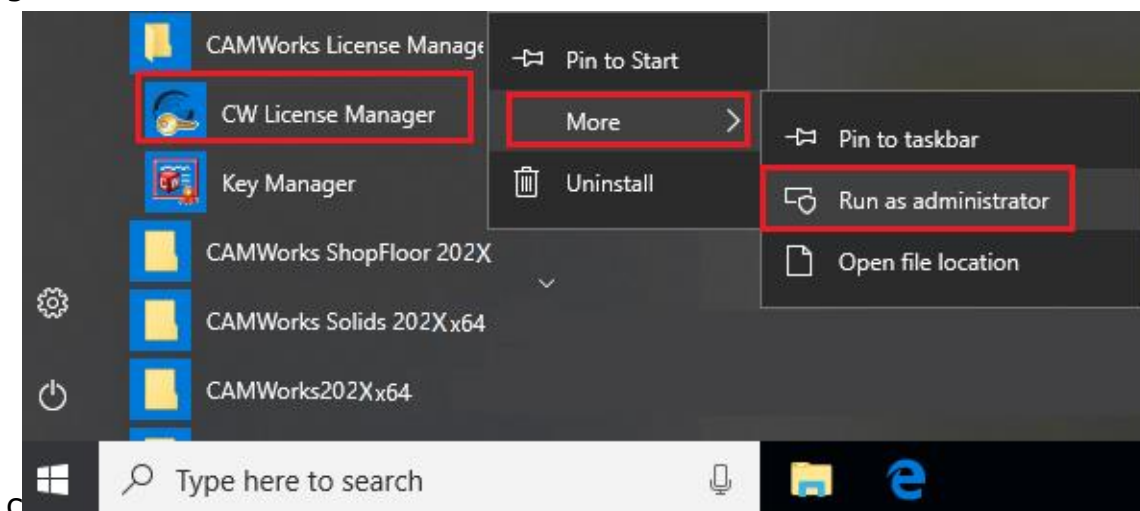
Launching the CAMWorks License Manager Tool with Admin Rights

You need to launch the *CAMWorks License Manager* tool with administrator privileges in order to activate, change and apply the license configuration settings within it. Without administrator-level rights, any changes done to the license configuration settings will be applicable only to the current user.

Launching CAMWorks License Manager on Windows 10 Systems with Admin Rights

1. Click on the *Windows 10 Start* menu and select ***CAMWorks License Manager***.
2. The ***CW License Manager*** item will be displayed under it. Right-click on ***CW License Manager*** and select ***More>>Run as administrator*** from the cascading context menu.

The *CAMWorks License Manager* dialog box will be displayed with full Admin rights.



Launching CAMWorks License Manager Tool with Admin Level Rights

Launching CAMWorks License Manager from within SOLIDWORKS Application

The *CAMWorks License Manager* tool can be launched from the *SOLIDWORKS* or *CAMWorks Solids* environment if the *CAMWorks* application is loaded as an *Add-in*. To launch the *CAMWorks License Manager* tool, click on the ***Help*** menu and select ***CAMWorks 2022>>License Manager***.

The *CAMWorks License Manager* dialog box will be displayed with full Admin rights.



Upgrading the CAMWorks License Manager Tool

The *CAMWorks* application is regularly updated with enhancements and bug-fixes. Similarly, the *CAMWorks License Manager* tool too contains periodic updates with respect to the License Management Mechanism. Such updates are made available to users in the form of *Service Pack* releases.

To ensure that you receive critical enhancements pertaining to license management, ensure that your installation of the *CAMWorks License Manager* tool too is updated whenever you upgrade your *CAMWorks* installation.

Whenever your existing *CAMWorks License Manager* installation is upgraded, the current license settings will always be retained. No manual intervention for reassigning the settings is required. This ensures a smooth transition to the upgraded version.

The Key Manager Tool

The *Key Manager* tool serves as an alternative method for activating/ viewing/ updating the [Hardware Dongle Licensing](#). It cannot be used for other *CAMWorks* licensing methods such as *Online Activation* and *License File Based* method.

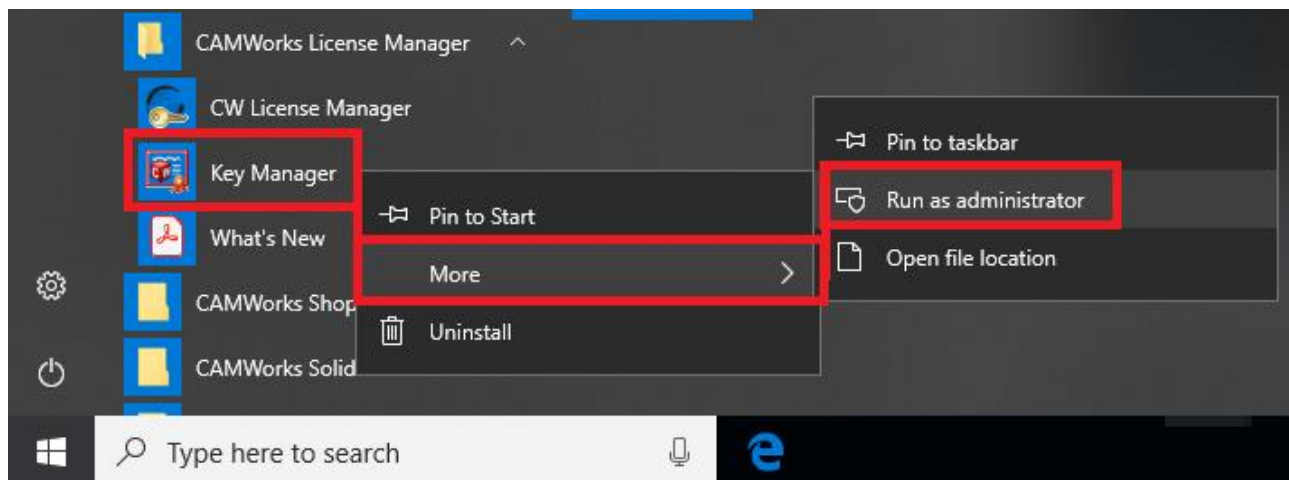
Installing the Key Manager Tool

This software tool is automatically installed when you install the ***CAMWorks License Manager*** tool. (The installer for [CAMWorks License Manager](#) tool installs both the *CAMWorks License Manager* as well as the *Key Manager* programs).

Launching the Key Manager Tool with Admin-level Rights

To access the *Key Manager* program with Admin-level rights on a Windows 10 machine, following are the steps:

- i. Click on the *Windows 10 Start* menu and then left mouse click on the ***CAMWorks License Manager*** item.
- ii. The *Key Manager* option will be displayed in the dropdown list. Right-click on this item.
- iii. Select ***More>>Run as Administrator*** in the cascading context menu.
- iv. The ***Update Hardware License 2022 Ver 2.0*** dialog box will be displayed.



Launching Key Manager Program with Admin Level Rights

User Subscription Plan

When you purchase a *CAMWorks* license, you will also be enrolled for a *CAMWorks User Subscription Plan (USP)* of a specific duration after paying the applicable fee. You will be briefed about the *USP* when you purchase the desired products/[modules](#) from the *CAMWorks* suite of applications.

Being enrolled in the *CAMWorks User Subscription Plan* makes you eligible to receive *CAMWorks* technical support and training. It also allows you to keep your *CAMWorks* applications up to date with new features and performance enhancements in *CAMWorks* released in the form of *CAMWorks* Releases and Service Packs.

If your *USP* expires while your *CAMWorks* license is still active, it may impact your eligibility to install the latest *CAMWorks* Service Packs. For details, please refer, [Appendix B: User Subscription Plan](#).

License Version Date

Geometric Americas, Inc. periodically releases new *CAMWorks* versions in the form of Service Packs. Every *CAMWorks* version released has a *License Version Date* associated with it. This *License Version Date* indicates whether you are eligible to use the newly released *CAMWorks* version or not.

For details on how to check the License Version Date of the *CAMWorks* version that you intend to install and you whether you are eligible to run it, refer [Appendix C: Checking the License Version Date](#).



2. ACTIVATING NODELOCKED LICENSE USING HARDWARE DONGLE

The **Hardware Dongle** (also referred to as a **Key** or **Security Block**) is an alternative form of single-user (**Standalone/Nodelocked**) **Licensing** for CAMWorks and protects against unauthorized use.

You will be provided with a Hardware Dongle if you choose it as your Licensing method. This dongle is a small hardware device that fits on the USB port of the computer.

Given in this chapter are the steps to activate a standalone license using [Hardware Dongle Licensing method](#).

License File for Hardware Dongle (*.COD file)

To activate your Nodelocked (Standalone/Single User) license using Hardware Dongle licensing method, you require a license file. You will be provided with a Hardware Dongle. The license file (with *.**COD** extension) contains licensing information will be emailed to you.

This license file you receive will be programmed to run the CAMWorks modules that you have purchased. The following information is embedded in the CAMWorks license file:

- Unique CAMWorks Serial Number
- Duration of the license ([Perpetual](#) or [Time-bound](#))
- [CAMWorks modules](#) and products you are licensed to run
- Expiry Date of your [User Subscription Plan](#)

Once received, this license file must be activated using the [CAMWorks License Manager](#) tool.

If, at a later stage, you purchase additional modules/applications from the CAMWorks suite of modules and products, then you will be provided with a fresh *.cod file. You will need to replace your existing *.cod license file with the new file.

Note: The hardware dongle is essentially your license and you may want to insure it against loss. If the dongle is lost or stolen, you will be required to purchase a new license.

Pre-Requisites

1. **CAMWorks License Manager:** The [CAMWorks License Manager](#) tool is a pre-requisite for activating the [.cod file](#) (License file for Hardware Dongle) that you will receive via email.

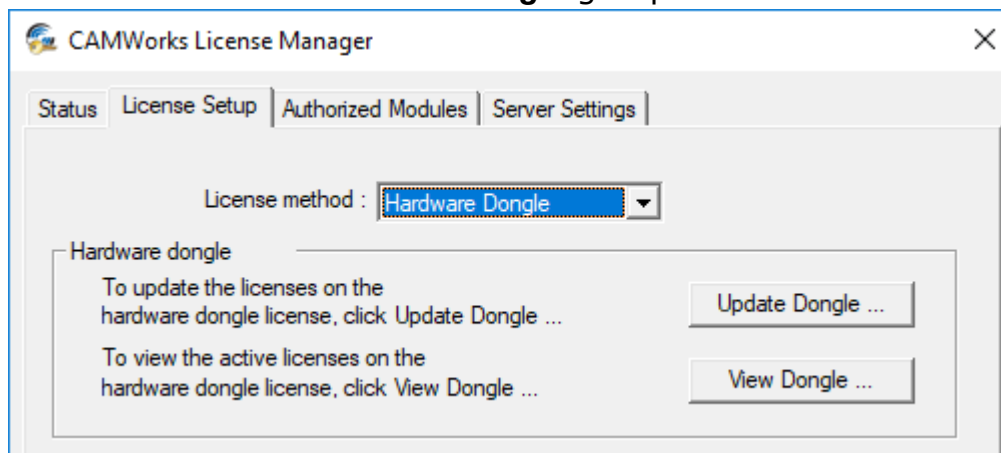


2. **Hardware Dongle License Driver:** The [Hardware Dongle License Driver \(Sentinel Driver ver. 7.6.9\)](#) program on your system facilitates the detection and activation of the Hardware Dongle on your system. This program is automatically installed when you install CAMWorks.
3. **Administrator Privileges:** You must be logged in as Administrator with full privileges when assigning or editing settings changes in the **CAMWorks License Manager** tool.

Activating/Updating the License for Hardware Dongle

Given below are the steps to activate your Hardware Dongle license:

1. Attach the Hardware Dongle to the USB port of your computer.
2. You will have provided you with a **license file (*.cod)** for your hardware dongle via email. Save this file to your computer on which CAMWorks will be run.
3. [Launch the CAMWorks License Manager tool with Admin-level rights.](#)
4. The CAMWorks License Manager dialog box will be displayed. Click on the **License Setup** tab.
5. For the License method, make sure the **Hardware Dongle** option is selected. This action activates the **Hardware Dongle** group box.



Select 'Hardware Dongle' as the License Method

6. Click on the **Update Dongle** button.
7. The **Open COD File** dialog box will be displayed.
8. Browse to the location where the *.cod file is located.
9. Select the *.**COD** file and click **Open**.
10. The **Update Protection Block** dialog box is displayed. This dialog box contains all information with respect to the license such as key information, authorized modules, authorized versions etc. Click on the **Update** button in this dialog box to activate/update the license.



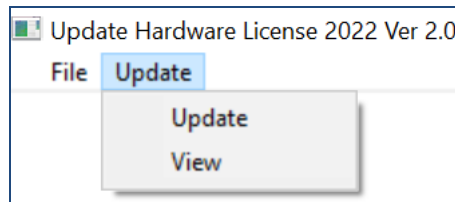
11. When the *.COD file is successfully updated/activated, the message "**Security Protection Block updated successfully**" will be displayed.
Your Hardware Dongle License is now activated.

Note: If you are updating multiple dongles, make sure you have the correct *.cod file for each dongle.

Activating Hardware Dongle License using Key Manager

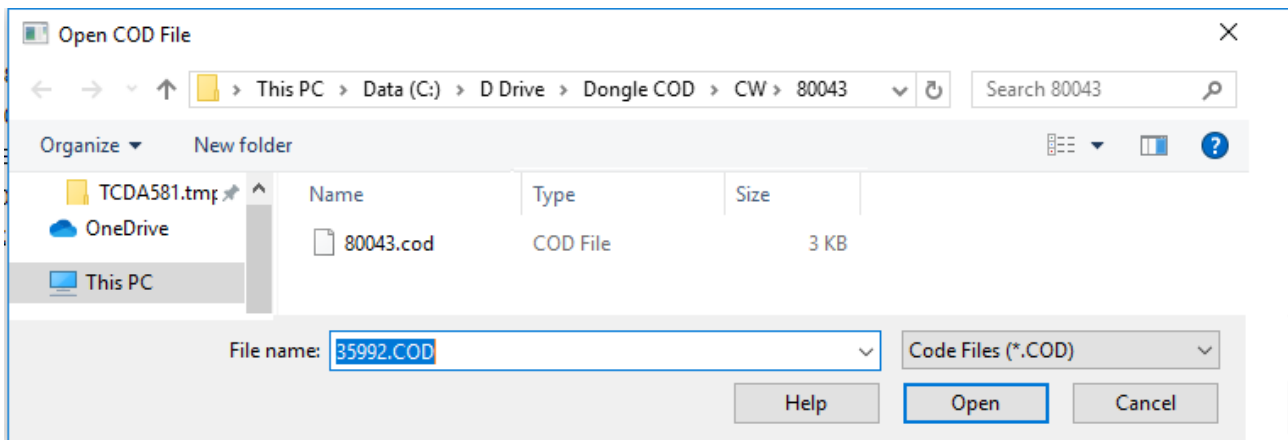
Activating/Updating the Hardware Dongle License using Key Manager

1. Attach the Hardware Dongle to the USB port of your computer.
2. You will have received a license file (*.cod) via email for your hardware dongle. Save this file to your computer on which CAMWorks will be run.
3. Click **Start** on the Windows 10 task bar and select **CAMWorks License Manager>>Key Manager**.
4. The **Update Hardware License 2022 Ver 2.0** dialog box will be displayed.



Update Menu Bar of the 'Update Hardware License' dialog box

5. Select **Update** on the menu bar, then select **Update** from the dropdown menu.
6. The **File Explorer** dialog box titled **Open COD File** will be displayed. The *.cod license file corresponding to your dongle will be listed in the **File name** field.
7. Browse to the folder location that contains the new *.COD file, then click **Open**.



Open COD File Dialog Box



License Activation Using Hardware Dongle

8. A dialog box displays the current dongle information and the changes that will be made when the dongle is updated.
9. Click the **Update** button within this dialog box.
10. The **Update Hardware License 2022 Ver. 2.0 – CAMWorks for SOLIDWORKS** dialog box will be displayed. The left half of the user displays licensing information of the current hardware dongle license while the right half displays licensing information of the new license that will be activated.
Click on the Update button at the bottom of the dialog box to replace the current license with the new license.

Update Hardware License 2022 Ver. 2.0 – CAMWorks for SOLIDWORKS dialog box

11. When the *.cod file is successfully updated, the message **"Security Protection Block updated successfully"** will be displayed.
Your Hardware Dongle License is now activated/ updated.

Viewing Hardware Dongle Related Information using Key Manager

You can view your Hardware Dongle License Information using the [Key Manager](#) tool. For details, refer the topic: [Viewing Hardware Dongle Related Information using Key Manager Tool](#) in [Appendix A: CAMWorks Licensing Information](#) of this document.



Using the Hardware Dongle

Once the Hardware Dongle License is activated, it must always remain attached to your computer's USB port while *CAMWorks* is in use. *CAMWorks* scans and reads the license configuration in the dongle during start-up and periodically while it is running.

If you face any licensing issues with respect to Hardware Dongle Licensing, then for troubleshooting, refer [Troubleshooting A: License Activation](#) & [Troubleshooting B: Licensing Issues for Hardware Dongle Licensing](#).

Reactivating (Renewing) the Hardware Dongle License

You will need to reactivate/renew your Hardware Dongle license in the following scenarios:

- i. When you renew your [User Subscription Plan \(USP\)](#)
- ii. When you renew your [time-bound](#) license after it expires
- iii. When you purchase a reconfigured license that can run additional [CAMWorks modules](#) or products

Renewing the Hardware Dongle License using CAMWorks License Manager

The steps to be followed for renewing the hardware dongle license using the *CAMWorks License Manager* are the same as that for activating the license. For details, refer the topic: [Activating/Updating the License for Hardware Dongle](#) in this chapter.

Renewing the Hardware Dongle License using Key Manager

The steps to be followed for renewing the hardware dongle license are the same as that for activating the license. Refer the section [Activating/Updating the Hardware Dongle License using Key Manager](#) in this chapter.



APPENDIX A: CAMWORKS LICENSING INFORMATION

Given in this appendix are all relevant details you need to know about CAMWorks licensing before you proceed with activating, renewing, or upgrading the Hardware Dongle license.

License Duration of the CAMWorks License

The CAMWorks license can be either perpetual or time bound in nature.

CAMWorks License of Perpetual Nature

The CAMWorks license you purchase from your Reseller is usually perpetual in nature. This means that the license will never expire, and you can continue using the CAMWorks application forever. However, note that you need to purchase a separate [User Subscription Plan \(USP\)](#) in order to receive latest updates for CAMWorks and to receive technical support.

For more details on *User Subscription Plan*, read [Appendix B: User Subscription Plan](#) of this document.

CAMWorks License of Time-bound nature

In most cases, the CAMWorks license issued to you will be a time bound license. Such licenses are non-perpetual in nature and CAMWorks will not function after the expiry date of the license.

If you are running CAMWorks using a license which is time bound in nature, when fewer than 30 days remain for the license to expire, CAMWorks will display a message indicating the number of days left for the license to expire. If you want to renew your license, email your CAMWorks Reseller or Register@camworks.com. After renewing, you need to [reactivate your license](#).

The steps to be followed for reactivating the hardware dongle license using the CAMWorks License Manager are the same as that for activating the license. Refer: [Chapter 2: Activating Nodelocked License using Hardware Dongle](#).

CAMWorks License Modes

When you purchase a CAMWorks license, the mode in which it is intended to be run is also embedded in the license. CAMWorks is currently supplied in Commercial, Educational and Instructor license modes. When CAMWorks fails to detect a valid license, it will run in [Demonstration Mode](#) when launched as an Add-In within SOLIDWORKS.

Commercial Mode

The *Commercial* mode of the CAMWorks license is intended for commercial purposes. CAMWorks is fully functional in the *Commercial* mode.



Educational Mode

The *Educational* mode of the *CAMWorks* software license is intended for non-commercial, educational use only. The *Educational* license mode may not be resold or used for commercial purposes. In the *Educational* mode version, *CAMWorks* is fully functional except for these restrictions:

- *CAMWorks* data saved in files using the *Educational* mode license cannot be restored in a *Commercial* license mode.
- Post processing is disabled.
- The software may not be resold or used for commercial purposes.

Instructor Mode

The *Instructor* mode of the *CAMWorks* software license is intended for purchase by educational institutes and to be used by Instructors. In the *Instructor* mode version, *CAMWorks* is fully functional except for these restrictions:

- *CAMWorks* data saved in files using the *Instructor* mode license cannot be restored in a *Commercial* license version. However, *CAMWorks* data saved in files using a *Commercial* mode license can be run on *Instructor* mode license.
- The software may not be resold or used for commercial purposes.

Demonstration Mode

CAMWorks will run in *Demonstration* mode in the following cases:

- If a valid license has not been activated after installing *CAMWorks*.
- If the *CAMWorks* license expires
- When a valid *CAMWorks* license purchased is not detected by the [CAMWorks License Manager tool](#)

Limitations of the Demonstration Mode

In *Demonstration* mode, *CAMWorks* is fully functional except for these restrictions:

- *CAMWorks* data saved in files cannot be restored in a *Commercial* licensed version.
- Post processing will be disabled, and NC code cannot be generated.

Demonstration Mode when CAMWorks is Run as an Add-In in CAMWorks Solids

If you run *CAMWorks* as an Add-In within the *CAMWorks Solids* application, then you have a *CAMWorks* license that is configured to run [CAMWorks modules](#) as well as the *CAMWorks Solids* application. Once your license expires, you will not be able to run the *CAMWorks Solids* application without a valid *CAMWorks* license. Consequently, you cannot run *CAMWorks* in *Demonstration* mode as that requires the *CAMWorks Solids* application to be up and running.



CAMWorks Modules

The *CAMWorks* application is modular in nature i.e., depending on varied CNC machining requirements, it has separate modules for *2½ Axis Milling*, *3 Axis Milling*, *Rotary Milling*, *Turning*, *Mill Assembly Machining*, *Machine Simulation*, etc.

When you purchase the *CAMWorks* application, you will be advised on the combination of *CAMWorks* modules best suited to fulfil your machining requirements. The *CAMWorks* license file (*.cod) you receive and activate will be configured to run only the specific modules that you have purchased. When you run the *CAMWorks* application, only the user interfaces associated with the specific modules you purchased will be activated. You can view the *CAMWorks* modules you are licensed to run in the *Authorized Modules* tab of the *CAMWorks License Manager* tool (explained in the next paragraph).

Viewing the CAMWorks Modules you are licensed to run

Method 1: Viewing the CAMWorks Modules in Key Manager Tool

The *CAMWorks* modules, products, and applications you are licensed to run using your Hardware Dongle license can be viewed within the user interface of the [Key Manager](#) tool.

Following are the steps:

1. Attach the Hardware Dongle to the USB connector/port of your computer.
2. On the Windows system, [launch the Key Manager tool with Admin-level rights](#).
3. The **Update Hardware License 2022 Ver 2.0** dialog box will be displayed.
4. Click on the **Update** menu on the menu bar and then select **View** within the displayed dropdown menu.
5. The **Key Information – CAMWorks for SOLIDWORKS** dialog box will be displayed. Within this user interface, the *CAMWorks* modules, products, and applications that you are licensed to run using the active Hardware Dongle license can be visually identified by the presence of a check in their corresponding checkboxes.

Method 2: Viewing the CAMWorks Modules in License Info Dialog Box

Within the *CAMWorks* application's user interface, the *CAMWorks* modules that you are licensed to run using your Hardware Dongle license can be viewed in the *CAMWorks License Info* dialog box.

Following are the steps:

1. Launch *CAMWorks* as an Add-In within the *SOLIDWORKS/ CAMWorks Solids* environment.
2. Click on the **Help** menu and select **CAMWorks 2022>>License Info ...**. The *CAMWorks License Info* dialog box will be displayed.



3. All the CAMWorks modules will be listed in this dialog box. The *CAMWorks* modules that you are licensed to run using the active Hardware Dongle license can be visually identified by the presence of a check in their corresponding checkboxes.

CAMWorks License Info

License version date : YYYYMMDD (DD-MMM-YYYY)
Support (USP) expiry date : YYYYMMDD (DD-MMM-YYYY)
License method : Hardware key (dongle)
License type : Commercial

Available	Module	Start Up
<input type="checkbox"/>	2.5X Mill Limited	<input checked="" type="checkbox"/>
<input checked="" type="checkbox"/>	2.5X Mill	<input checked="" type="checkbox"/>
<input type="checkbox"/>	2.5X Mill plus	<input checked="" type="checkbox"/>
<input checked="" type="checkbox"/>	3X Mill L1	<input checked="" type="checkbox"/>
<input checked="" type="checkbox"/>	3X Mill L2	<input checked="" type="checkbox"/>
<input checked="" type="checkbox"/>	Turning	<input checked="" type="checkbox"/>
<input checked="" type="checkbox"/>	Rotary milling	<input checked="" type="checkbox"/>
<input checked="" type="checkbox"/>	Multi Function	<input checked="" type="checkbox"/>
<input checked="" type="checkbox"/>	SubSpindle	<input checked="" type="checkbox"/>
<input checked="" type="checkbox"/>	Mill/Turn	<input checked="" type="checkbox"/>
<input checked="" type="checkbox"/>	Wire EDM	<input checked="" type="checkbox"/>
<input type="checkbox"/>	3X Undercut	<input checked="" type="checkbox"/>
<input type="checkbox"/>	4X Mill	<input checked="" type="checkbox"/>
<input checked="" type="checkbox"/>	5X Mill	<input checked="" type="checkbox"/>
<input type="checkbox"/>	Machine Simulation - Legacy	<input checked="" type="checkbox"/>
<input type="checkbox"/>	Machine Simulation - Standard	<input checked="" type="checkbox"/>
<input type="checkbox"/>	Machine Simulation - Professional	<input checked="" type="checkbox"/>
<input checked="" type="checkbox"/>	Machine Simulation - Premium	<input checked="" type="checkbox"/>
<input checked="" type="checkbox"/>	VoluMill 2.5X	<input checked="" type="checkbox"/>
<input checked="" type="checkbox"/>	VoluMill 3X	<input checked="" type="checkbox"/>
<input checked="" type="checkbox"/>	PrimeTurning	<input checked="" type="checkbox"/>
<input type="checkbox"/>	CW Utilities	<input checked="" type="checkbox"/>
<input checked="" type="checkbox"/>	Posting	<input checked="" type="checkbox"/>
<input type="checkbox"/>	Estimating	<input checked="" type="checkbox"/>

Select All Unselect All Update Licenses

OK Help

CAMWorks License Info Dialog Box

Viewing Hardware Dongle Related Information using Key Manager Tool

You can view your Hardware Dongle License Information using the [Key Manager](#) tool.

Following are the steps to view the Hardware Dongle License Information using the *Key Manager*:



1. Attach the Hardware Dongle to the USB connector/port of your computer.
2. On the Windows system, [launch the Key Manager tool with Admin-level rights](#).
3. The **Update Hardware License 2022 Ver 2.0** dialog box will be displayed.
4. Click on the **Update** menu on the menu bar and then select **View** within the displayed dropdown menu.
5. The *Key Information – CAMWorks for SOLIDWORKS* dialog box will be displayed.

The dialog box is titled "Key Information - CAMWorks for SolidWorks". It contains several sections with various options and text fields.

- General:** Key Number: [XXXXXX], Expiration Date: [MM-DD-YYYY]
- Block Type:** Radio buttons for Customer (selected), Dealer, Instructor, and Educational.
- CAMWorks:** CAMWorks Ver: [MM-DD-YYYY]. A list of checkboxes for various modules: 2.5X Mill Limited, 2.5X Mill (checked), 2.5X Mill Plus, 3X Mill L1 (checked), 3X Mill L2 (checked), Turning (checked), Multi Function (checked), Mill-Turn (checked), Rotary Milling (checked), Sub Spindle (checked), Prime Turn (checked), 3X Undercut, 4X Mill, 5X Mill (checked), VoluMill 2.5X (checked), VoluMill 3X (checked), Mach Sim Standard, Mach Sim Pro, Mach Sim Premium (checked), Mach Sim Legacy, Wire EDM (checked), CWSolids Part, CWSolids Part & Assembly, CWSolids Part, Assembly & Drawing (checked), Utilities, Shop Floor (checked), and CW Nesting Ver: [0].
- Miscellaneous:** Checkboxes for Feeds & Speeds (checked), Predator (checked), Internal ProVerify, ParaSolid Translator, and Acis Translator.
- ProCAM 2D Modules:** ProCAM 2D Ver: [MM-DD-YYYY]. Checkboxes for CAD, Mill, Laser, Lathe 2 Axis, Plasma, Punch, EDM, Lathe 4 Axis, Edit/DNC, Verify All, and Lathe C Axis.
- ProCAM 3D Modules:** ProCAM 3D Ver: [MM-DD-YYYY]. Checkboxes for CAD, Surfacing, 3X Mill L1, and 3X Mill L2.

A "Cancel" button is located at the bottom right of the dialog box.

Key Information – CAMWorks for SOLIDWORKS Dialog Box



Given below is the Hardware Dongle license related information displayed within this user interface.

CAMWorks License Expiry Date

The **Expiration Date** field within the *General* group box in the top portion of the **Key Information – CAMWorks for SOLIDWORKS** dialog box indicates whether your CAMWorks license is perpetual or time-bound in nature.

- If your CAMWorks license is [perpetual](#) in nature, then the **Expiration Date** field will display the term *Permanent*.
- If your CAMWorks license is [time-bound](#) in nature, then the expiry date of your license will be displayed in the **Expiration Date** field in **MM-DD-YYYY** format.

License Mode

The Block mode group box indicates the [license mode](#). If you have a [Commercial mode](#) license, the **Customer** option within this group box will be active.

USP Expiry Date

The date displayed in **MM-DD-YYYY** format in the field labelled **CAMWorks Ver.** within the **CAMWorks** group box of this user interface indicates the expiry date of your *User Subscription Plan*.

CAMWorks Modules and Supplementary Programs

- The *CAMWorks* group box within this user interface displays all the names of all the *CAMWorks* modules.
- The *Miscellaneous* group box lists all other supplementary *CAMWorks* products and applications.
- The *ProCAM 2D Modules* and *ProCAM 3D Modules* group boxes list all the modules associated with the *ProCAM (Universal Post Generator)* program.

In all these above group boxes, the modules, products, and applications that you are licensed to run using the active Hardware Dongle license can be visually identified by the presence of a check in their corresponding checkboxes.



APPENDIX B: USER SUBSCRIPTION PLAN

Enrolling for a User Subscription Plan

When you purchase the *CAMWorks* license for the first time from a CAMWorks Reseller, you can opt to enroll you for a *User Subscription Plan* for a specific duration by paying an applicable fee.

Benefits of User Subscription Plan

Being enrolled in the *CAMWorks User Subscription Plan* has the following benefits:

- ➔ **Receiving updates:** It allows you to keep your CAMWorks application up to date with the new features and performance improvements of *CAMWorks* released in the form of *CAMWorks* Releases and Service Packs.
- ➔ **Technical Support:** You will receive technical support for all issues with respect to *CAMWorks* and associated utilities.

Once your USP expires, you will no longer receive updates or support. Ensure that you repurchase an appropriate *User Subscription Plan* from your CAMWorks Reseller to continue receiving technical support and updates. This helps to keep your CAMWorks system up to date with new features and performance improvements.

Note:

The CAMWorks license you purchase is usually perpetual in nature. However, the User Subscription Plan (USP) has a fixed duration. You need to repurchase a USP after your current plan expires.

Viewing the Expiry Date of your User Subscription Plan

You can verify the expiry date of your current *User Subscription Plan* using one of the following methods:

Method 1: Viewing USP Expiry Date in Key Manager Tool

1. Attach the Hardware Dongle to the USB connector/port of your computer.
2. On the Windows system, [launch the Key Manager tool with Admin-level rights](#).
3. The **Update Hardware License 2022 Ver 2.0** dialog box will be displayed.
4. Click on the **Update** menu on the menu bar and then select **View** within the displayed dropdown menu.
5. The **Key Information – CAMWorks for SOLIDWORKS** dialog box will be displayed.



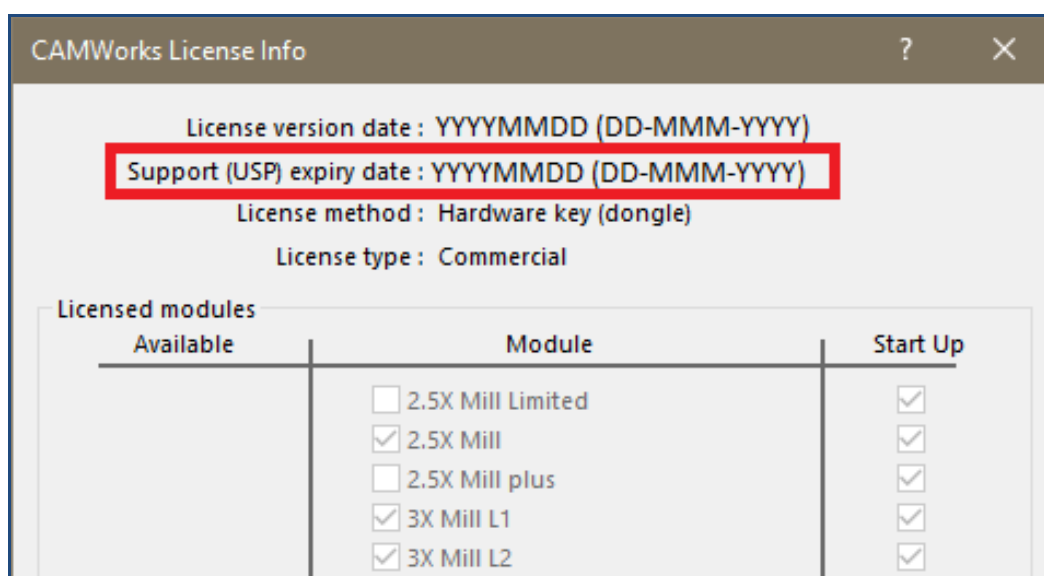
6. Observe the date displayed in *MM-DD-YYYY* format in the field labelled **CAMWorks Ver.** within the **CAMWorks** group box of this user interface. This date is the expiry date of your *User Subscription Plan*.

The screenshot shows the 'Key Information - CAMWorks for SolidWorks' dialog box. The 'CAMWorks' section is highlighted with a red box. It contains a 'CAMWorks Ver.' field with a date in MM-DD-YYYY format. Below this are several checkboxes for different CAMWorks features, including 2.5X Mill Limited, 3X Undercut, CWSolids Part, 2.5X Mill, 4X Mill, CWSolids Part & Assembly, 2.5X Mill Plus, 5X Mill, CWSolids Part, Assembly & Drawing, 3X Mill L1, VoluMill 2.5X, Utilities, 3X Mill L2, VoluMill 3X, Shop Floor, Turning, Mach Sim Standard, CW Nesting Ver., Multi Function, Mach Sim Pro, Mill-Turn, Mach Sim Premium, Rotary Milling, Mach Sim Legacy, Sub Spindle, Wire EDM, Prime Turn, Feeds & Speeds, Predator, ParaSolid Translator, Internal ProVerify, and Acis Translator. At the bottom, there are sections for ProCAM 2D Modules and ProCAM 3D Modules, each with a version field and a list of checkboxes for different modules.

The Key Information – CAMWorks for SOLIDWORKS User Interface

Method 2: Viewing Expiry Date of USP in License Info dialog box

4. Launch *CAMWorks* as an Add-In within the *SOLIDWORKS/ CAMWorks Solids* environment.
5. Click on the **Help** menu and select **CAMWorks 2022>>License Info ...**. The *CAMWorks License Info* dialog box will be displayed. The **Support (USP) expiry date** at the top left of this dialog box indicates the expiry date of your *User Subscription Plan*.



‘Support (USP) expiry date’ in the License Info Dialog Box

Significance of the Expiry Date of your User Subscription Plan

The *User Subscription Plan (USP)* that you purchase is for a fixed duration. After its expiry, you need to re-enroll for a fresh *User Subscription Plan*.

If you have an active USP, you can download and install the latest *CAMWorks* Releases and Service Packs. Hence, the expiry date of your *User Subscription Plan* assumes significance.

- If your *Support (USP) expiry date* is a date later than the current date, then it indicates that your *User Subscription Plan* is active.
- If the *Support (USP) expiry date* is a date prior to the current date, then it indicates that your *User Subscription Plan* has expired.
- You can install those *CAMWorks* versions which have a *License Version date* prior to or the same as the *Support (USP) expiry date*.
- When there are only 30 days or less remaining for your *User Subscription Plan* to expire, a **Reminder message** will be displayed when you load *CAMWorks*. This message indicates the number of days remaining for your *User Subscription Plan* to expire.
- In order to update an existing *CAMWorks* installation, you must currently be enrolled in a *CAMWorks User Subscription Plan*. If your *User Subscription Plan* has expired, you need to renew your *User Subscription Plan* and then reactivate your Activation IDs. For details on how to reactivate your Hardware Dongle license, refer the topic in [Chapter 2](#) of this document.



Correlation Between USP Expiry Date and License Expiry Date

The **Expiration Date** field within the General group box in the top portion of the **Key Information – CAMWorks for SOLIDWORKS** dialog box indicates whether your CAMWorks license is perpetual or time-bound in nature.

- If your CAMWorks license is [perpetual](#) in nature, then the **Expiration Date** field will be blank.
- If your CAMWorks license is [time-bound](#) in nature, then the expiry date of your license will be displayed in the **Expiration Date** field in **MM-DD-YYYY** format.

Note:

- If your *User Subscription Plan* expires (indicated by the USP expiry date), you can still continue using the licensed modules of CAMWorks till the expiry date of your license (indicated by the Expiration date).
- If your CAMWorks license is perpetual in nature and your *User Subscription Plan* expires, then you can use the licensed modules of the currently installed CAMWorks version in perpetuity.

However, in both the above cases, you can no longer avail the benefits associated with the *User Subscription Plan* unless you renew your plan.

The screenshot shows the 'Key Information - CAMWorks for SolidWorks' dialog box. The 'General' section contains 'Key Number: XXXXXX' and 'Expiration Date: MM-DD-YYYY'. The 'Block Type' section has radio buttons for 'Customer', 'Dealer', 'Instructor', and 'Educational'. The 'CAMWorks' section shows 'CAMWorks Ver: MM-DD-YYYY'. Below this are checkboxes for '2.5X Mill Limited', '3X Undercut', 'CWSolids Part', '2.5X Mill' (checked), '4X Mill', and 'CWSolids Part & Assembly'.

The Key Information – CAMWorks for SOLIDWORKS User Interface



APPENDIX C: CHECKING THE LICENSE VERSION DATE

License Version Date of CAMWorks Version and its Significance

Geometric Americas, Inc. periodically releases new *CAMWorks* versions in the form of Service Packs. Every *CAMWorks* version released has a *License Version Date* associated with it. This *License Version Date* indicates whether you are eligible to use the newly released *CAMWorks* version or not.

- If the *License Version Date* associated with a *CAMWorks* version is lower than the expiry date of the [User Subscription Plan](#) (USP) associated with your *CAMWorks* license, then you are eligible to run and use the *CAMWorks* application. (To view the [expiry date](#) of your *User Subscription Plan*, refer the topic: [Viewing the Expiry Date of your User Subscription Plan](#) in [Appendix B](#) of this document.)
- If the *License Version Date* associated with a *CAMWorks* version is later than the expiry date of the [User Subscription Plan](#) (USP) associated with your *CAMWorks* license, then you are not eligible to run the *CAMWorks* application. You may download and install the *CAMWorks* version but won't be able to run *CAMWorks* unless a license with a renewed [User Subscription Plan](#) (USP) is activated.

Illustrative Example to indicate eligibility to run a CAMWorks version based on License Version Date:

If the *License Version Date* of the new version of *CAMWorks* is *February 15, 2022* [20220215] and the *Support (USP) expiry date* of the *CAMWorks* license is *March 15, 2022* [20220315], then you are eligible to install and run the new version as the *License version date* is a date prior to the USP expiry date.

Viewing the License Version Date associated with a CAMWorks Version

You can view the *License Version Date* associated with the *CAMWorks* version currently loaded as Add-In within *SOLIDWORKS /CAMWorks Solids* using one of the following methods:

Viewing License Version Date in CAMWorks ReadMe File

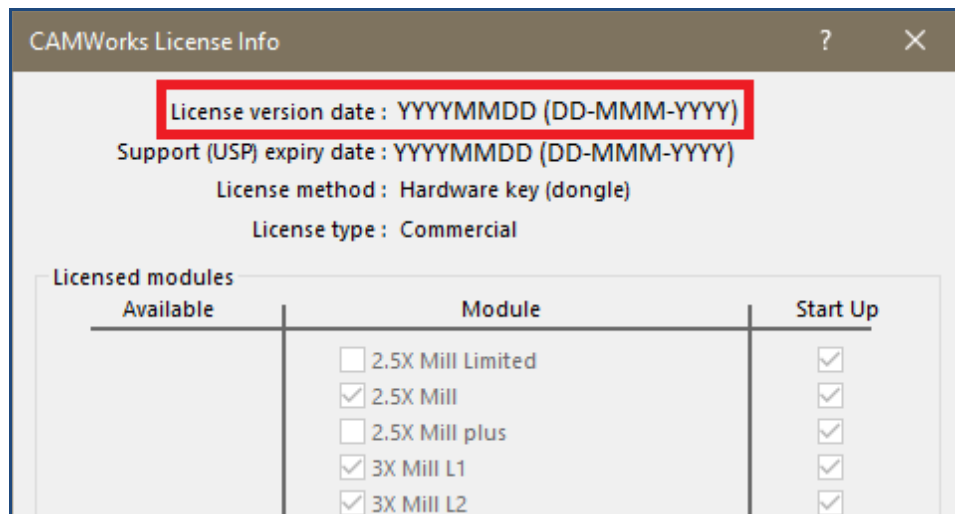
The *License Version date* of a *CAMWorks* version is mentioned in the *ReadMe* file. The *ReadMe* file for the version installed on your system can be accessed by selecting:

<Drive>:\Program Files\CAMWorks2022x64 \CAMWorks_VC141\Lang\English\Manuals\ ReadMe



Viewing License Version Date in CAMWorks License Info Dialog Box

- i. Load CAMWorks as an Add-In within the SOLIDWORKS/CAMWorks Solids environment.
- ii. Click on the **Help** menu and select *CAMWorks 2022>>License Info ...*
- iii. The *CAMWorks License Info* dialog box will be displayed. The **License version date** is given at the top of this dialog box.



‘License Version date’ in the License Info Dialog Box



TROUBLESHOOTING A: LICENSE ACTIVATION

As a result of the complexity of the computer system's operating environment, conflicts and problems can occur.

This Troubleshooting section provides suggestions for you to resolve issues when a valid Hardware Dongle License is not detected on launching CAMWorks.

Valid License is not detected when CAMWorks is launched

When *CAMWorks* is launched as an Add-In within the *SOLIDWORKS* environment, it automatically checks for the presence of a valid license. If a valid license is detected, then *CAMWorks* is launched. If a valid license is not detected, then *CAMWorks* displays the ***CAMWorks License Configuration*** dialog box. In the top portion of this dialog box, a message stating the reason why a valid license could not be detected by the *CAMWorks* application will be displayed.

Following are the different warning messages displayed in this dialog box on non-detection of valid Hardware Dongle license along with the corresponding reason for non-detection of the license:

Sr. no.	Warning Messages displayed in the dialog box	Reason why the Error Message is displayed
1.	Not able to detect the hardware key. Please make sure that the hardware key is connected and the drivers are updated.	When <i>CAMWorks</i> cannot detect the Hardware Dongle connected to the computer port for a <i>CAMWorks</i> License using Hardware Dongle licensing method .
2.	<i>CAMWorks</i> could not find a valid .COD file for the Hardware Dongle license and will start in Demonstration mode. While in Demonstration mode you will not be able to post process and <i>CAMWorks</i> data saved in this file will not be restored in a Commercial license mode.	When the .COD file is either not activated or has expired for a <i>CAMWorks</i> License using Hardware Dongle Licensing method .

In addition to stating the reason why a valid license could not be detected, the Warning Message dialog box further states that *CAMWorks* will run in [Demonstration mode](#) in the absence of a valid license. It also informs that files saved in Demonstration mode cannot be later opened in any other mode.

Depending on the reason for non-detection of a valid license, one of the following license options displayed in the dialog box will be selected by default:

- I have a node locked (Standalone) license file



- I know the Server Host name and port number for the floating license
- I have an Activation ID
- Request license and continue in Demonstration mode
- I have a COD file to update the hardware dongle
- Continue in Demonstration mode

Dialog box displayed when valid CAMWorks license is not detected

In order to proceed using the *CAMWorks* application using the [Hardware Dongle licensing method](#), you need to select one of the following options.

- If you have already renewed your Hardware dongle license and received a *.COD file via email, then select the option ***I have a COD file to update the hardware dongle*** and click the **OK** button. Follow the steps given in the topic [Activating/Updating the License for Hardware Dongle](#) in [Chapter 2](#) to activate your license. Once the license is successfully verified, you can launch and use the *CAMWorks* application.
- If your Hardware dongle license has expired and you wish to renew a license, select the *Request license and continue in Demonstration mode* option and click the **OK** button. A license request file will be generated. Email



this file to **register@camworks.com** with your valid credentials. You will receive the *.COD file in one U.S. business day. In the meanwhile, you can run and use the CAMWorks application in [Demonstration mode](#). After receiving the *.COD file, follow the steps given in the topic [Activating/Updating the License for Hardware Dongle](#) in [Chapter 2](#) to activate your license. Once the license is successfully verified, you can launch and use the CAMWorks application.

If you need assistance on the instructions to be followed after you select a specific option, click on the **Help** button at the bottom right corner of this dialog box. The resultant Help webpage displayed gives details on the various options and the instructions on how to activate the license based on the option chosen.



TROUBLESHOOTING B: LICENSING ISSUES FOR HARDWARE DONGLE LICENSING

Listed below are some suggestions for troubleshooting if you are using a Hardware dongle device for CAMWorks licensing. After trying each suggestion, launch CAMWorks to verify if the licensing issue has been corrected. A successful launching indicates that the issue has been resolved.

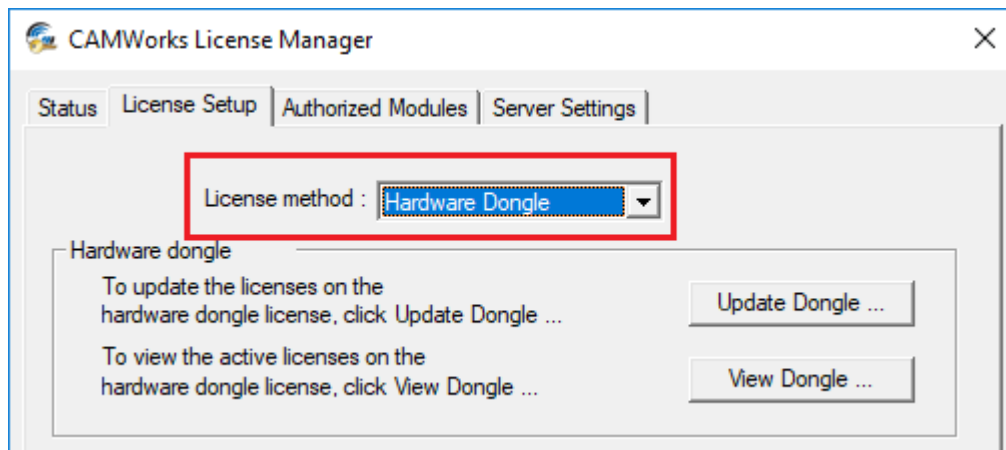
1. Verify whether the Dongle is Installed Correctly

The first step in troubleshooting this problem is to make sure the dongle is connected to the computer, then start *SOLIDWORKS/CAMWorks Solids*.

If you have a USB key, plug the key into the USB connector on the PC. If all the USB connectors are being used, you can purchase a USB hub to add additional connectors.

2. Check the CAMWorks License Manager for Incorrect Option Settings

Check whether the option selected in the *License method* dropdown list under the *License Setup* tab of the [CAMWorks License Manager tool](#) is incorrectly set to *Nodelocked (Standalone)* or *Floating Network Server* instead of *Hardware Dongle*. [Launch the CAMWorks License Manager](#) and make sure the *License method* is set to *Hardware dongle*.



Select 'Hardware Dongle' as the License Method in License Setup Tab of CAMWorks License Manager

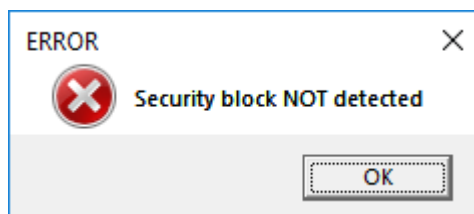
3. Check the Communication Link between Computer and Dongle

If a valid license is not detected after you try the first two suggestions, run the [Key Manager](#) tool and verify.

1. On the Windows system, [launch the Key Manager tool with Admin-level rights](#).



2. The **Update Hardware License 2022 Ver 2.0** dialog box will be displayed.
3. Select **Update** on the menu bar, then select **View** within its dropdown menu.
 - If the PC is communicating with the dongle, the *Key Information* dialog box will display info associated with the current license.
 - If the dongle is not communicating, then an error message will be displayed indicating that the security block (hardware dongle) was not detected. Use the information below to continue troubleshooting.



Error Message Displayed when Hardware Dongle is not Detected by Key Manager

Troubleshooting Communication between the Computer and the Dongle

Listed below are some causes and possible solutions when the computer is unable to communicate with the dongle. After trying each suggestion, run the *CAMWorks License Manager* program as explained above.

Potential Cause 1: The Sentinel driver is not installed or is corrupt

Make sure the Sentinel driver is installed. To check for installation, look for the *Sentinel Protection Installer 7.6.9* in the **Control Panel>> Programs and Features** list.

Solution

If it is not listed, you need to [download and install the Sentinel Driver \(Version 7.6.9\) from the CAMWorks website](#).

If it is listed, use the **Uninstall or change a program** function in the Control Panel to uninstall the Sentinel System Driver. Reboot, then reinstall the driver. Note that when using a USB key, the dongle should not be connected when you install the driver.

Potential Cause 2: The Hardware Dongle may have failed

Hardware Dongles occasionally fail. Dongles are very sensitive and have been known to fail if used with certain PC hardware. Some multifunction boards that contain disk controllers, serial, parallel and game ports have been known to burn out the dongle.

Solution

If you think this has occurred in your system, contact your CAMWorks Reseller. As a licensed user, you can return the dongle to your CAMWorks Reseller and request a replacement.