



# License Management Guide for Nodelocked License

This document details how to activate, deactivate and reactivate (for purposes of renewing or upgrading) the CAMWorks license for a single-user (Nodelocked/ Standalone) installation using Activation IDs (viz. the **Online License Activation Method**).

## Disclaimer

Geometric Americas, Inc. (a subsidiary of HCL Technologies Ltd.) makes no warranties, either express or implied with respect to this manual. Geometric Americas, Inc. reserves the right to revise and improve products as it sees fit, and to revise the specifications and information contained herein without prior notice. Due to continuing product development, specifications and capabilities described in this manual are subject to change without notice.

## Trademarks

The following and other product names and corporate references herein are registered or proprietary trademarks of their respective owners.

CAMWorks® is a registered trademark of Geometric Americas, Inc.

SOLIDWORKS® is a registered trademark of Dassault Systèmes  
SOLIDWORKS Corp.

FeatureManager™ is a trademark owned jointly by DS SOLIDWORKS and Bentley Systems, Inc.

All other brands and names are property of their respective owners.



Copyright © 2022 Geometric Americas, Inc. All Rights Reserved.



**Product Version: CAMWorks 2022 SP2**



## **TABLE OF CONTENTS**

<b>1. CAMWorks License Management Overview .....</b>	<b>5</b>
Procuring the CAMWorks License .....	5
Information Covered in this Manual.....	5
CAMWorks Licensing Information .....	5
User Subscription Plan.....	5
License Version Date .....	6
Online License Activation .....	6
Options for Online License Activation of CAMWorks .....	6
Online License Reactivation.....	7
Options for Online Reactivation of CAMWorks License.....	7
Online License Deactivation (For Transferring a Nodelocked License to Another System).....	8
CAMWorks License Manager (Software Tool) .....	8
Installing the CAMWorks License Manager Tool .....	8
Launching the CAMWorks License Manager Tool with Admin Rights .....	8
Upgrading the CAMWorks License Manager Tool.....	9
<b>2. Activating a Nodelocked License Using Automatic Method .....</b>	<b>10</b>
Steps to Activate Nodelocked License using Automatic Method .....	10
<b>3. Renewing/Upgrading a Nodelocked License Using Automatic Method .....</b>	<b>14</b>
Steps to Reactivate Nodelocked License using Automatic Method .....	14
<b>4. Transferring Nodelocked License Using Automatic Method .....</b>	<b>16</b>
Steps to Transfer License using Automatic Method.....	16
<b>5. Activating a Nodelocked License Using Manual Method .....</b>	<b>19</b>
Steps to Activate a Nodelocked License using Manual Method .....	19
<b>6. Renewing/Upgrading a Nodelocked License Using Manual Method.....</b>	<b>24</b>
Steps to Reactivate a Nodelocked License using Manual Method .....	24
<b>7. Transferring Nodelocked License Using Manual Method .....</b>	<b>26</b>
Manual Method of License Deactivation and Activation.....	26
<b>Appendix A: CAMWorks Licensing Information .....</b>	<b>31</b>
Types of CAMWorks License .....	31
The Standalone (Nodelocked) License.....	31
The Floating Network Server License .....	31
License Duration of the CAMWorks License.....	32



CAMWorks License of Perpetual Nature .....	32
CAMWorks License of Time-bound nature .....	32
CAMWorks License Modes .....	32
Commercial Mode.....	32
Educational Mode .....	32
Instructor Mode.....	33
Demonstration Mode .....	33
CAMWorks Modules.....	34
Viewing the CAMWorks Modules you are licensed to run .....	34
Viewing CAMWorks Modules in CAMWorks License Manager Dialog box .....	34
Information Displayed in the Authorized Modules Tab.....	34
<b>Appendix B: User Subscription Plan .....</b>	<b>36</b>
Enrolling for a User Subscription Plan.....	36
Benefits of User Subscription Plan.....	36
Viewing the Expiry Date of your User Subscription Plan .....	36
Significance of the Expiry Date of your User Subscription Plan.....	37
License Duration.....	38
<b>Appendix C: Checking the License Version Date.....</b>	<b>39</b>
License Version Date of CAMWorks Version and its Significance.....	39
Viewing the License Version Date associated with a CAMWorks Version.....	39



# **1. CAMWORKS LICENSE MANAGEMENT OVERVIEW**

## **Procuring the CAMWorks License**

*Geometric Americas, Inc.* sells products and modules under the CAMWorks suite either directly or through a worldwide network of **Value-Added Resellers (VARs)**. Users may choose between single user licenses (also alternatively referred to as *Standalone* or *Nodelocked* licenses) or multi-user licenses (henceforth referred to as Floating Network Server licenses in this text).

## **Information Covered in this Manual**

After downloading and installing the *CAMWorks* application, the next step is to activate your license.

This document provides information on activating a *CAMWorks* Nodelocked license using the [Online License Activation Method](#).

For information on Managing a Network Floating license, see the separate document ***Floating\_Network\_Online\_License\_Management\_Guide.pdf***.

## **CAMWorks Licensing Information**

Before you activate your license, you must possess a basic understanding of the licensing related information such as the license type, license duration, license mode, etc. For details, we recommend that you refer to [Appendix A: CAMWorks Licensing Information](#) of this document.

## **User Subscription Plan**

When you purchase a CAMWorks license, you will also be enrolled for a CAMWorks **User Subscription Plan (USP)** of a specific duration after paying the applicable fee. You will be briefed about USP when you purchase the desired products/[modules](#) from the CAMWorks suite of applications.

Being enrolled in the *CAMWorks User Subscription Plan* makes you eligible to receive CAMWorks Technical support and training. It also allows you to keep your CAMWorks applications up to date with new features and performance enhancements in *CAMWorks* released in the form of *CAMWorks Releases* and *Service Packs*.

If your USP expires while your CAMWorks license is still active, it may impact your eligibility to install the latest CAMWorks Service Packs. For details, please refer, [Appendix B: User Subscription Plan](#).



### License Version Date

*Geometric Americas, Inc.* periodically releases new *CAMWorks* versions in the form of Service Packs. Every *CAMWorks* version released has a *License Version Date* associated with it. This *License Version Date* indicates whether you are eligible to use the newly released *CAMWorks* version or not.

For details on how to check the License Version Date of the *CAMWorks* version that you intend to install and you whether you are eligible to run it, refer [Appendix C: Checking the License Version Date](#).

### Online License Activation

The *Online License Activation* method (introduced from ***CAMWorks 2022 SP0*** version onwards) employs *Activation IDs* that function as software keys for activating the *CAMWorks* application and its various licensed modules and products.

The *Activation IDs* for the *CAMWorks* application are alphanumeric and consist of 32 characters. One or more Activation IDs, depending on the products ordered, will be emailed to end users upon processing of a *CAMWorks* related purchase order

Once received, these Activation ID(s) must be input by the user in the relevant user interface of the *CAMWorks License Manager* tool for license activation purposes and then validated online for successful license activation.

This document provides detailed information on how to activate/deactivate/reactivate (for renewing or upgrading) the *CAMWorks* license for a [single-user \(Nodelocked/ standalone\) installation](#) using the ***Online License Activation Method***.

For details on how to activate/deactivate/reactivate the *CAMWorks* license for a [Floating Network installation](#) using the ***Online License Activation Method***, refer the following document that is present in the same folder as this document: ***Floating\_Network\_Online\_License\_Management\_Guide.pdf***

### Options for Online License Activation of CAMWorks

Based on whether or not you have an Internet connection on the machine on which the license will be activated, following two options are available for Online license activation:

#### 1. Automatic Option for Online Activation of License:

In the Automatic method of Online license activation, a live Internet connection is required for activating the license. You need to input the Activation IDs/Entitlement IDs provided to you and then validate it.

For details on how to renew an expired [Nodelocked](#) license, refer:

[Chapter 2: Activating a Nodelocked License using Automatic Method](#).



### 2. Manual Option for Online Activation of License

Use this method only if you do not have a live internet connection. In this method of online license activation, you need to create a license request file using the Activation IDs (Entitlement IDs) provided to you and then email to your reseller or [Register@camworks.com](mailto:Register@camworks.com). As a response, you will receive a license file via email. You need to load and activate this received file to activate your CAMWorks products.

For details on how to renew an expired [Nodelocked](#) license, refer:

[Chapter 5: Activating a Nodelocked License using Manual Method.](#)

## Online License Reactivation

Your current license will need to be reactivated in the following scenarios:

- When you want to replace your current license with an upgraded license (that confers permission for additional number of products and/or [modules](#))
- When you want to reactivate your existing license after its [User Subscription Plan \(USP\)](#) expires.

### Options for Online Reactivation of CAMWorks License

CAMWorks provides the following two options to reactivate your license using the Online license activation method:

#### 1. Automatic Option for Online Reactivation of License:

In the Automatic method of Online license activation, a live Internet connection is required for reactivating the license. When this method is selected and you execute the *Reactivate My Products...* command, the license manager mechanism will contact the license servers of HCL Technologies, validate the *Activation IDs* and then reactivate all the products that were selected for reactivation on the machine.

For details on how to reactivate your Nodelocked license using the *Automatic* method, refer the topic: [Steps to Reactivate Nodelocked License using Automatic Method](#) in [Chapter 3](#) of this document.

#### 2. Manual Option for Online Reactivation of License

The manual method of license reactivation is recommended only in case you do not have a live Internet connection.

For details on how to reactivate your Nodelocked license using the *Manual* method, refer the topic: [Steps to Reactivate a Nodelocked License using Manual Method](#) in [Chapter 6](#) of this document.





## Online License Deactivation (For Transferring a Nodelocked License to Another System)

The need to transfer your active *CAMWorks* license from one computer to another may occur if a new computer is purchased to replace a failed computer or simply to upgrade to a higher performance machine.

The *Online Deactivation/Activation* options provided within the [CAMWorks License Manager](#) tool allow you to deactivate your active *CAMWorks Nodelocked* license on your current Windows system and then activate that license on another Windows system.

- For details on all the steps involved in transferring your *CAMWorks Nodelocked* license from one system to another using the *Automatic* Method of *Online Deactivation/Activation*, refer [Chapter 4: Transferring Nodelocked License Using Automatic Method](#) of this document.
- For details on all the steps involved in transferring your *CAMWorks Nodelocked* license from one system to another using *Manual* Method of *Online Deactivation/Activation*, refer [Chapter 7: Transferring Nodelocked License Using Manual Method](#) of this document.

## CAMWorks License Manager (Software Tool)

The *CAMWorks License Manager* software tool is used to activate the license as well as to manage its the licensing mechanism.

### Installing the CAMWorks License Manager Tool

The *CAMWorks License Manager* tool is automatically installed/updated along with the *CAMWorks* application when you run the *CAMWorks* Installer.

### Launching the CAMWorks License Manager Tool with Admin Rights

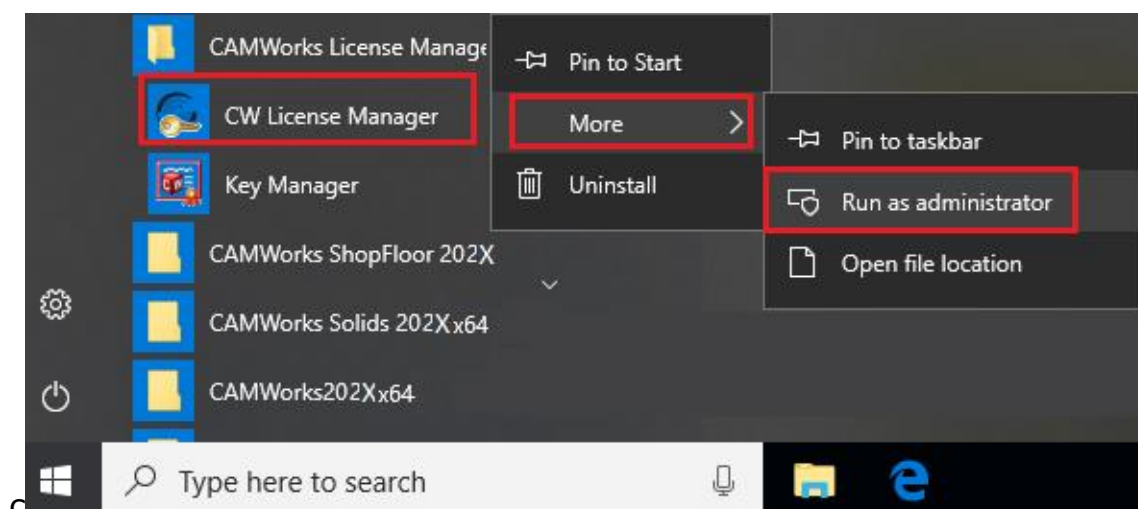
You need to launch the *CAMWorks License Manager* tool with administrator privileges in order to activate, change and apply the license configuration settings within it. Without administrator-level rights, any changes done to the license configuration settings will be applicable only to the current user.

#### Launching CAMWorks License Manager on Windows 10 Systems with Admin Rights

1. Click on the *Windows 10 Start* menu and select **CAMWorks License Manager**.
2. The **CW License Manager** item will be displayed under it. Right-click on **CW License Manager** and select **More>>Run as administrator** from the cascading context menu.

The *CAMWorks License Manager* dialog box will be displayed with full Admin rights.





Launching CAMWorks License Manager Tool with Admin Level Rights

### Launching CAMWorks License Manager from within SOLIDWORKS Application

The *CAMWorks License Manager* tool can be launched from the *SOLIDWORKS* or *CAMWorks Solids* environment if the *CAMWorks* application is loaded as an *Add-in*. To launch the *CAMWorks License Manager* tool, click on the **Help** menu and select **CAMWorks 2022>>License Manager**.

The *CAMWorks License Manager* dialog box will be displayed with full Admin rights.

### Upgrading the CAMWorks License Manager Tool

The *CAMWorks* application is regularly updated with enhancements and bug-fixes. Similarly, the *CAMWorks License Manager* tool too contains periodic updates with respect to the License Management Mechanism. Such updates are made available to users in the form of *Service Pack* releases.

To ensure that you receive critical enhancements pertaining to license management, ensure that your installation of the *CAMWorks License Manager* tool too is updated whenever you upgrade your *CAMWorks* installation .

---

**Whenever your existing *CAMWorks License Manager* installation is upgraded, the current license settings will always be retained. No manual intervention for reassigning the settings is required. This ensures a smooth transition to the upgraded version.**

---

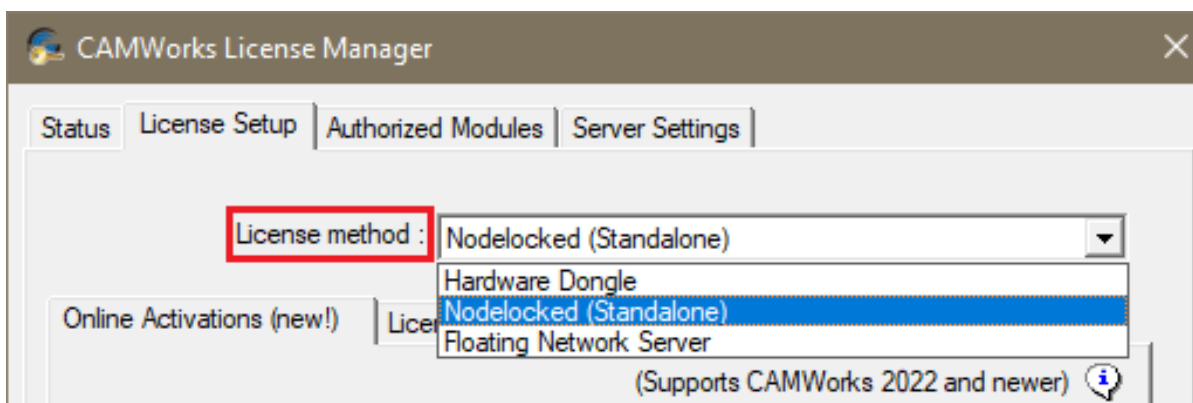


## 2. ACTIVATING A NODELOCKED LICENSE USING AUTOMATIC METHOD

Given in this chapter are the steps to activate a [Nodelocked \(Standalone\) license](#) using the [Automatic](#) option of [Online Activation](#) licensing method.

### Steps to Activate Nodelocked License using Automatic Method

- i. Make a note of the Activation IDs (Entitlement IDs) that you will receive (usually via email) the for the *CAMWorks* products you have purchased.
- ii. Download and install the *CAMWorks* application using the downlink provided to you. (Installing the *CAMWorks* application automatically also installs the *CAMWorks License Manager* tool.)
- iii. [Launch the CAMWorks License Manager tool](#). Switch to the *License Setup* tab. Under this tab, select **Nodelocked (Standalone)** as the *License Method*.

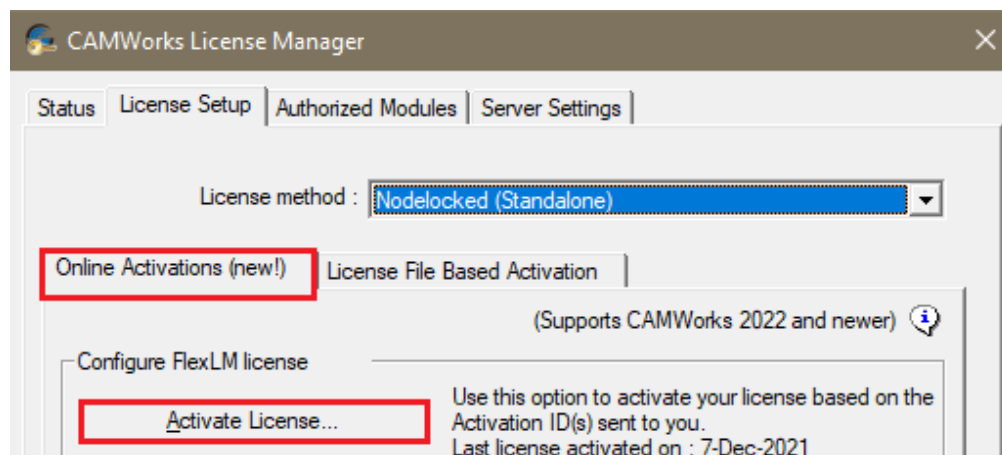


Select 'Nodelocked (Standalone)' option for License Method under License Setup Tab

- iv. Two contextual tabs will now be displayed under this tab viz. **Online Activations (New!)** and **License Based Activation**. Click on the **Online Activations (New!)** page under the tab. Ensure that you have a live Internet connection.
- v. In the *Configure FlexLM License* group box under this contextual tab, click on the **Activate License...** button.

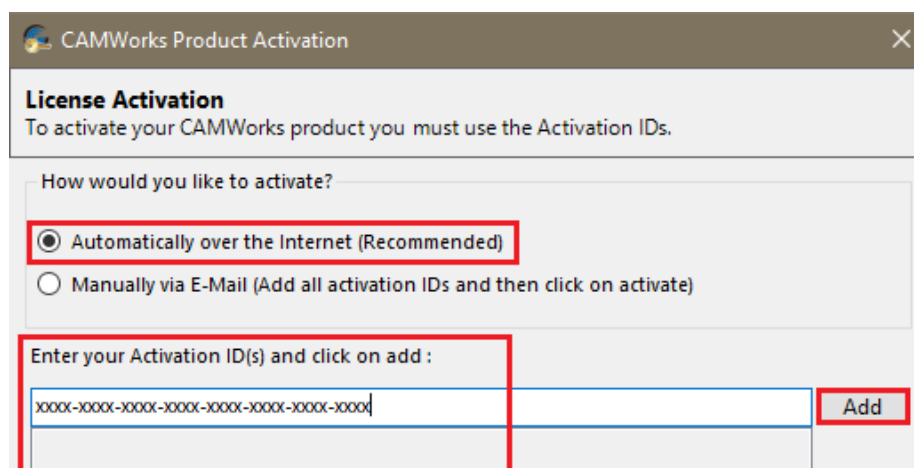


## License Activation Using Online Activation Method



Click on 'Activate License...' Button within 'Configure FlexLM license' Group Box under Online Activations (New!) Page of License Setup Tab

- vi. The *CAMWorks Product Activation* dialog box will be displayed. Select the ***Automatically over the Internet Recommended*** option.
- vii. In the field provided below the label '***Enter your Activation ID(s) and click on Add button:***', input the Activation ID provided to you.



Select the 'Automatically over the Internet' option and input your Activation ID in the 'Enter your Activation ID(s) field of the CAMWorks Product Activation Dialog Box

- viii. Click on the *Add* button adjacent to this field. The *Activation ID* input by you will then be listed in the ***Activation IDs to be activated*** list box below the field.
- ix. If you have been provided multiple Activation IDs, then repeat steps viii. and ix.
- x. Click on the ***Find my product(s)*** button below the list box. All the CAMWorks products associated with the input Activation IDs will be displayed in the Products associated with above IDs list box in a tabular format.



## License Activation Using Online Activation Method

- xi. The *license expiry date* and *User Subscription Plan (USP)* expiry date of each product will also be displayed.
- xii. Place a check in the ***I have read the HCL Technologies Privacy Policy and agree to its terms and conditions*** check box.
- xiii. Placing the check in this checkbox activates the ***Activate My Products...*** button at the bottom of the dialog box. Click on this button.

**CAMWorks Product Activation**

**License Activation**  
To activate your CAMWorks product you must use the Activation IDs.

How would you like to activate?

☒ Automatically over the Internet (Recommended)  
☐ Manually via E-Mail (Add all activation IDs and then click on activate)

Enter your Activation ID(s) and click on add :

XXXX-XXXX-XXXX-XXXX-XXXX-XXXX-XXXX-XXXX

Products associated with above IDs :

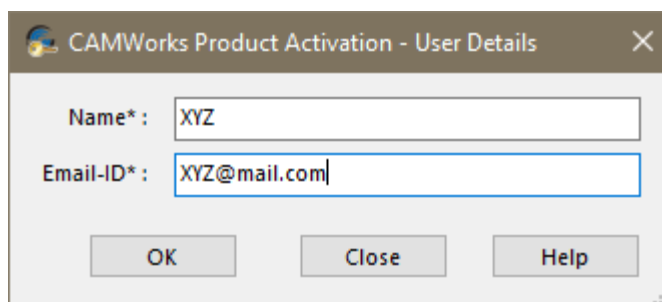
Product	ExpiryDate	USPDate
CAMWorks Milling Professional	Permanent	31-Oct-2022
CAMWorks Solids P	Permanent	31-Oct-2022
Commercial	Permanent	31-Oct-2022

[Click here to open the license portal](#)

☐ I have read the HCL Technologies [Privacy Policy](#) and agree to its terms and conditions.

Execute 'Find My Products', place a check in the licensing terms checkbox and then click on the 'Activate My Products...' Button

- xiv. The ***CAMWorks Product Activation - User Details*** pop-up dialog box will be displayed.

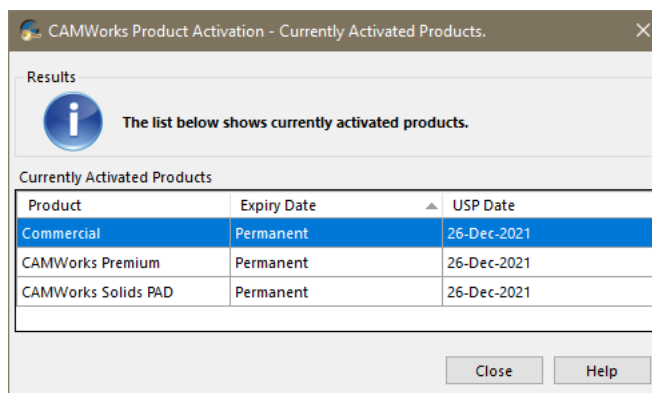


The dialog box titled "CAMWorks Product Activation - User Details" contains two input fields: "Name\*" with the value "XYZ" and "Email-ID\*" with the value "XYZ@mail.com". Below the fields are three buttons: "OK", "Close", and "Help".

**CAMWorks Product Activation – User Details Dialog Box**

Provide your username and email ID within this pop-up dialog box and click the *OK* button. The pop-up dialog box will close.

- xv. The license manager mechanism will now attempt to establish contact with *HCL Technologies'* license servers. Upon successful establishment of contact, it will validate the *Activation ID(s)* input by you.
- xvi. If successfully validated, the **CAMWorks Product Activation – Currently Activated Products** user interface will be displayed. This user interface will list each activated *CAMWorks* product, the expiry date of the product and the expiry date of its *User Subscription Plan (USP)* in tabular format.



The dialog box titled "CAMWorks Product Activation - Currently Activated Products" displays a table of activated products. It includes an information icon and a message: "The list below shows currently activated products." The table has three columns: Product, Expiry Date, and USP Date.

Product	Expiry Date	USP Date
Commercial	Permanent	26-Dec-2021
CAMWorks Premium	Permanent	26-Dec-2021
CAMWorks Solids PAD	Permanent	26-Dec-2021

Buttons: Close, Help

**CAMWorks Product Activation – Currently Activated Products Dialog Box**

- xvii. Click on the *Close* button to close this user interface. The user interface will now revert to the *License Setup* tab.
- xviii. Close the *CAMWorks License Manager* dialog box.  
Your *CAMWorks* license is now successfully activated.  
You can now commence using the *CAMWorks* application with the activated [Nodelocked license](#).



### **3. RENEWING/UPGRADING A NODELOCKED LICENSE USING AUTOMATIC METHOD**

You need to reactivate your CAMWorks license when your license or [User Subscription Plan](#) expires or when you upgrade your license to include more CAMWorks modules.

Given in this chapter are the steps to reactivate a [Nodelocked License](#) using the [Automatic option](#) of the [Online License Reactivation Method](#).

#### **Steps to Reactivate Nodelocked License using Automatic Method**

1. [Launch the CAMWorks License Manager tool](#). The *CAMWorks License Manager* dialog box will be displayed.
2. Switch to the *License Setup* tab. Under this tab, ensure that *Nodelocked (Standalone)* option is selected as the *License Method*.
3. Two contextual tabs will now be displayed under the *License Setup* tab. Click on the contextual tab labelled *Online Activations (New!)* under the tab. Ensure that you have a live Internet connection.
4. In the *Configure FlexLM License* group box under this contextual tab, click on the *Reactivate Existing...* button.
5. The *CAMWorks Product Reactivation* dialog box will be displayed. Select the *Automatically over the Internet (Recommended)* option.
6. The ***Please select the Product(s) to be reactivated*** list box will display all the CAMWorks products currently active on the machine. The license expiry date, [User Subscription Plan \(USP\) expiry date](#) and associated *Activation ID* for each product will also be displayed.
7. In this list box, place a check against all the product entries whose licenses you wish to reactivate.
8. Place a check in the '***I have read the HCL Technologies Privacy Policy and agree to its terms and conditions***' check box.
9. Placing the check in this check box activates the ***Reactivate My Products...*** button at the bottom of the dialog box. Click on this button.
10. The license manager mechanism will now attempt to establish contact with the license servers of *HCL Technologies* via the Internet. Up on successfully establishing contact, it will validate all the products that were checked in the *Please select the product(s) that need to be reactivated* list box and then reactivate them.



## License Activation Using Online Activation Method

11. Once this process of reactivation is complete, the modal window labeled *Reactivation* will be displayed. This modal window will display a status message listing all the *Activation IDs* that have been successfully reactivated. Click on the *OK* button to close this modal window. This user interface will revert to the *CAMWorks Product Reactivation* dialog box.

**CAMWorks Product Reactivation Dialog Box**

12. Click on the *Close* button at the bottom of the dialog box to revert to the *License Setup* tab.
13. Close the *CAMWorks License Manager* dialog box.  
The *CAMWorks* products that were selected for reactivating are now successfully activated. You can now commence using those software products.





## 4. TRANSFERRING NODELOCKED LICENSE USING AUTOMATIC METHOD

The need to transfer your active *CAMWorks* license from one machine to another usually comes up when you upgrade your hardware or Windows systems.

The *Online Deactivation/Activation* options provided within the [CAMWorks License Manager](#) tool allow you to deactivate your active *CAMWorks Nodelocked license* on your current Windows system and then transfer and activate that license on another Windows system.

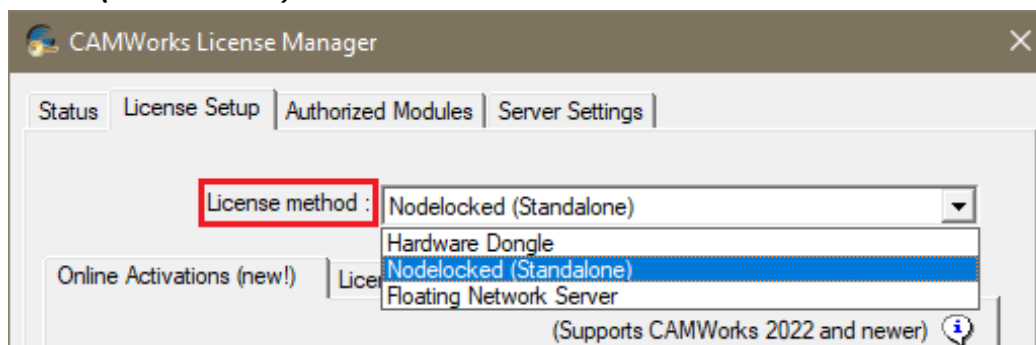
This chapter covers the [Automatic Method of License Deactivation](#).

This topic covers all the steps involved in transferring your *CAMWorks Nodelocked license* from one system to another using *Automatic Method* of *Online Deactivation/Activation*.

### Steps to Transfer License using Automatic Method

Given below are the steps involved in transferring your *CAMWorks Nodelocked license* from one system to another using *Automatic Method* of *Online Deactivation/Activation*.

- i. [Launch the CAMWorks License Manager tool](#). The *CAMWorks License Manager* dialog box will be displayed.
- ii. Click on the *License Setup* tab of this dialog box. Under this tab, ensure that ***Nodelocked (Standalone)*** is selected as the ***License Method***.

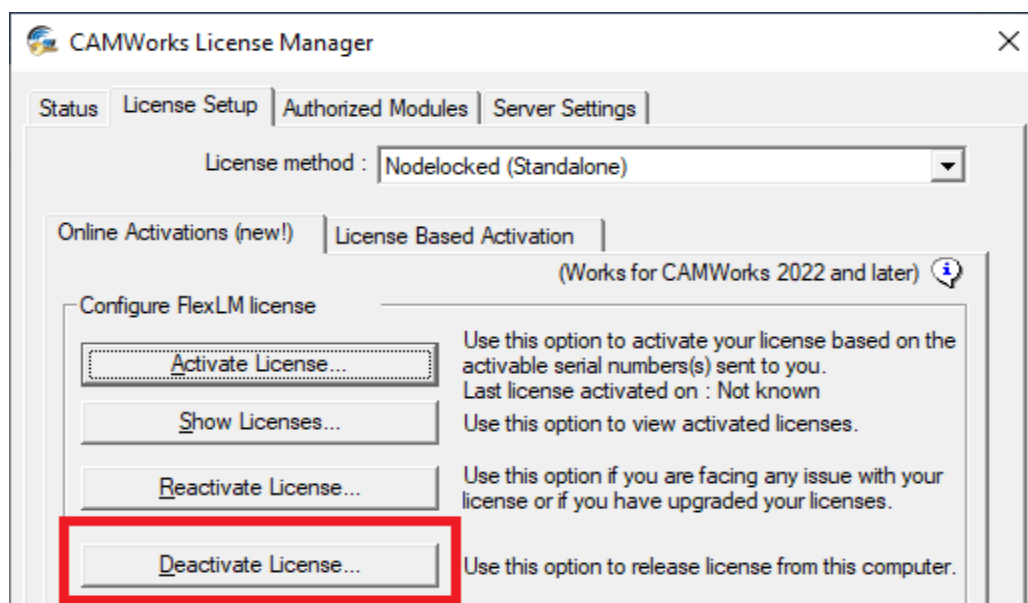


Select '***Nodelocked (Standalone)***' option for License Method

- iii. Selecting the ***Nodelocked (Standalone)*** option displays two contextual tabs under the *License Setup* tab. Click on the ***Online Activations (New!)*** tab under the *License Setup* tab. Ensure that you have a live Internet connection.
- iv. In the ***Configure FlexLM License*** group box under this contextual tab, click on the ***Deactivate License...*** button.

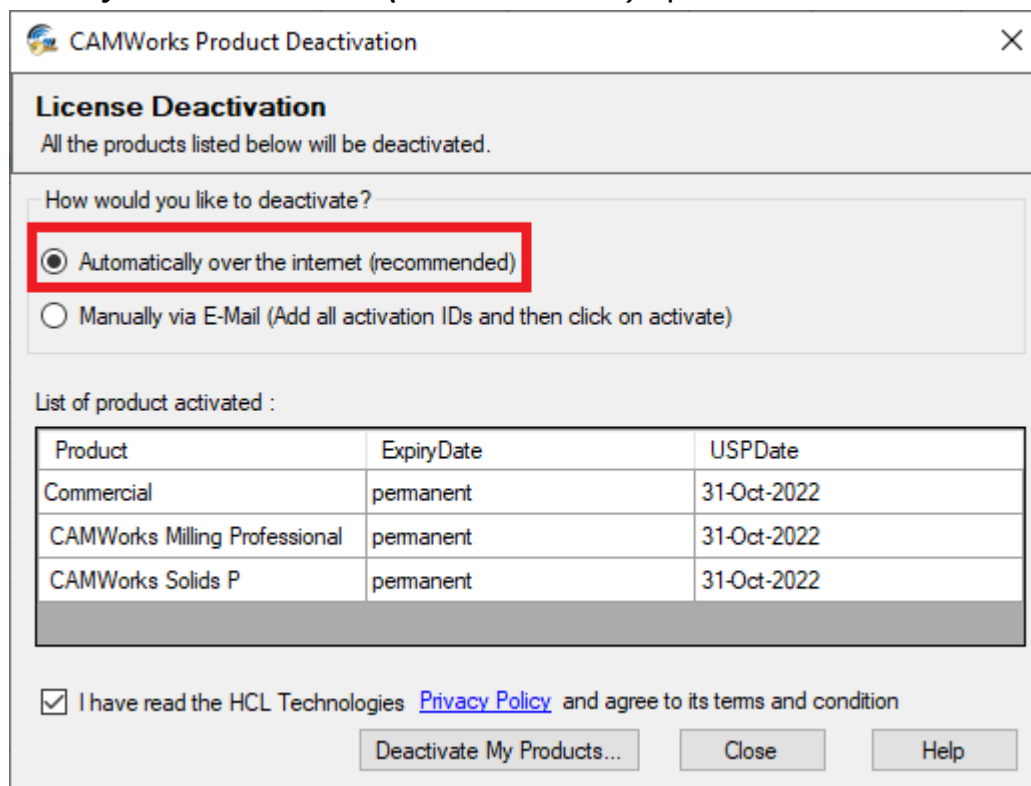


## License Activation Using Online Activation Method



Click on 'Deactivate License...' button present in Online Activations Contextual tab under License Setup Tab

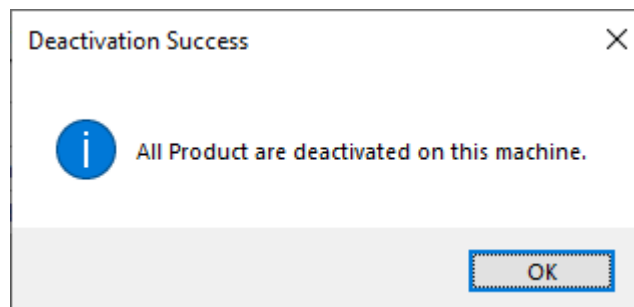
- v. The **CAMWorks Product Deactivation** dialog box will be displayed. Select the **Automatically over the Internet (Recommended)** option.



**CAMWorks Product Deactivation Dialog Box**



- vi. The **List of Product(s) Activated** list box will display all the CAMWorks products currently active on the machine. The license expiry date and [User Subscription Plan \(USP\) expiry date](#) of each product will also be displayed.
- vii. Place a check in the **I have read the HCL Technologies Privacy Policy and agree to its terms and conditions** check box.
- viii. Placing a check in this check box activates the **Deactivate My Products...** button at the bottom of the dialog box. Click on this button.
- ix. The license manager mechanism will contact the license servers of HCL Technologies via the Internet. It will validate and get all the CAMWorks products listed in the **List of Product(s) activated** list box deactivated.
- x. Once this process is complete, the **Deactivation Success** modal window will be displayed. This modal window will display a status message indicating that all the previously active products have now been successfully deactivated on the machine. Click on the OK button of this modal window to close it. The user interface will revert to the **CAMWorks Product Deactivation** dialog box. Observe that the **List of Product(s) activated** list box in this dialog box is now empty.



**Deactivation Success Modal Window**

- xi. Click on the *Close* button at the bottom of the dialog box to revert to the **License Setup** tab.
- xii. Close the **CAMWorks License Manager** dialog box.

Your CAMWorks license is now successfully deactivated. You can now transfer the license to another machine of your choice by activating the license on that machine. This activation can be done automatically or manually using the *Online Activation Method*. The steps involved are identical to activating a fresh Nodelocked license.

Based on whether a live Internet connection is available or not on the new system on which you intend to activate the license, refer the following topics of this document respectively:

- [Steps to Activate Nodelocked License using Automatic Method](#) in [Chapter 2](#)
- [Steps to Activate a Nodelocked License using Manual Method](#) in [Chapter 5](#)

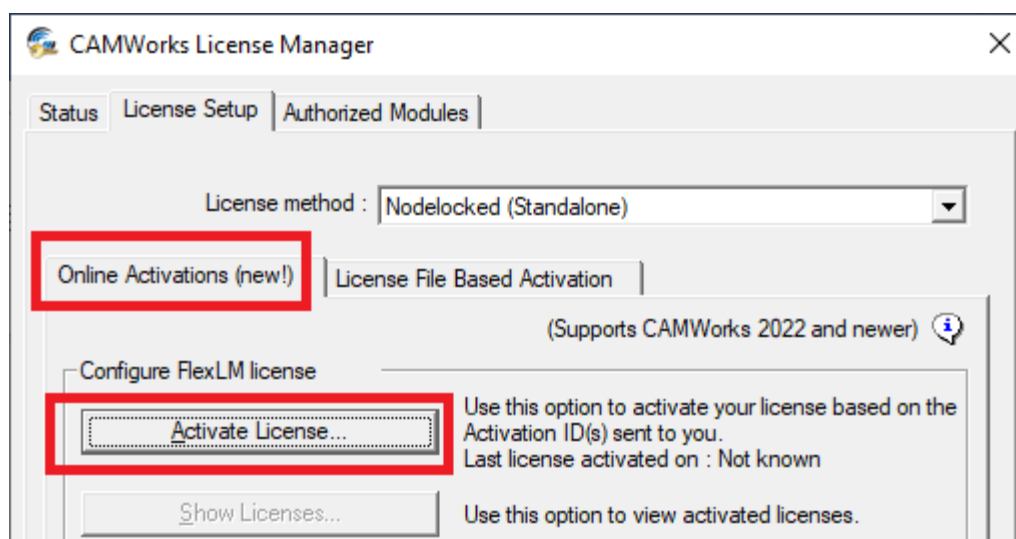


## 5. ACTIVATING A NODELOCKED LICENSE USING MANUAL METHOD

Given in this chapter are the steps to activate a [Nodelocked \(Standalone\) license](#) using the [Manual option](#) of [Online Activation](#) licensing method.

### Steps to Activate a Nodelocked License using Manual Method

- i. Once you pay the applicable license fees, you will receive (usually via email) the Activation IDs (Product keys/ Entitlement IDs) for the products you purchase.
- ii. Download and install the *CAMWorks* application using the link provided to you. (Installing the *CAMWorks* application automatically also installs the *CAMWorks License Manager* tool.)
- iii. [Launch the CAMWorks License Manager tool](#).
- iv. Switch to the *License Setup* tab. Under this tab, select **Nodelocked (Standalone)** as the *License Method*.
- v. Two pages (tabs) will now be displayed under this page viz. *Online Activations (New!)* and *License Based Activation*. Click on the *Online Activations (New!)* page under the tab. Ensure that you have a live Internet connection.
- vi. In the **Configure FlexLM license** group box under this page, click on the **Activate License...** button.



License Setup Tab



- vii. The *CAMWorks Product Activation* dialog box will be displayed. Select the **Manually via E-mail (Add all activation IDs and then click on activate)** option.
- viii. In the field provided below the label '**Enter your Activation ID(s) and click on Add button:**', input the Activation ID provided to you.
- ix. Click on the *Add* button adjacent to this field. The Activation ID input by you will then be listed in the **Activation IDs to be activated** list box below the field.
- x. If you have been provided multiple Activation IDs, then repeat steps viii. and ix.
- xi. Place a check in the **I have read the HCL Technologies Privacy Policy and agree to its terms and conditions** check box.
- xii. Placing the check in this checkbox activates the **Activate My Products...** button at the bottom of the dialog box. Click on this button.

Assign Settings as indicated above in the CAMWorks Product Activation Dialog Box

- xiii. The *CAMWorks Product Activation - Manual Method Wizard* will be displayed.
- xiv. Provide your **username** and **email ID** and click the **Save** button.
- xv. A modal window indicating that the file has been successfully generated and saved will be displayed. This message will also indicate the file path to the saved file. This license request file generated contains the Activation ID(s) to be validated and activated.
- xvi. Email this license request file to [Register@camworks.com](mailto:Register@camworks.com).



CAMWorks Product Activation

1) Activation ID(s) which needs to be activated or deactivated

XXXX-XXXX-XXXX-XXXX-XXXX-XXXX-XXXX-XXXX

2) Press save to create a request file

Name\* : xyz

Email-ID\* : xyz@abc.com

Save...

3) Email the request to the following address to get a response file :

Register@camworks.com

OR Upload File on self service portal.  
(Login is required)

[Click here to open portal in a web browser](#)

4) Press open to load the response file

Open...

If you have received the response file, load it by clicking the Open button and then proceed with the below option. To discontinue, click Close. You can rerun the Wizard later.

Help Activate My Product(s) Close

Assign Settings as indicated above in the CAMWorks Product Activation - Manual Method Wizard

- xvii. You will receive a *CAMWorks Response file (\*.cwlic)* file via email within maximum one business day. Save this file on the machine on which you intend to activate the license.
- xviii. Click on the **Activate My Products...** command button in the *CAMWorks Product Activation* dialog box again to invoke the **CAMWorks Product Activation - Manual Method Wizard**.



CAMWorks Product Activation

1) Activation ID(s) which needs to be activated or deactivated

XXXX-XXXX-XXXX-XXXX-XXXX-XXXX-XXXX-XXXX

2) Press save to create a request file

Name\* : xyz

Email-ID\* : xyz@abc.com

Save...

3) Email the request to the following address to get a response file :  
**Register@camworks.com**

OR Upload File on self service portal.  
( Login is required )  
[Click here to open portal in a web browser](#)

4) Press open to load the response file

Open...

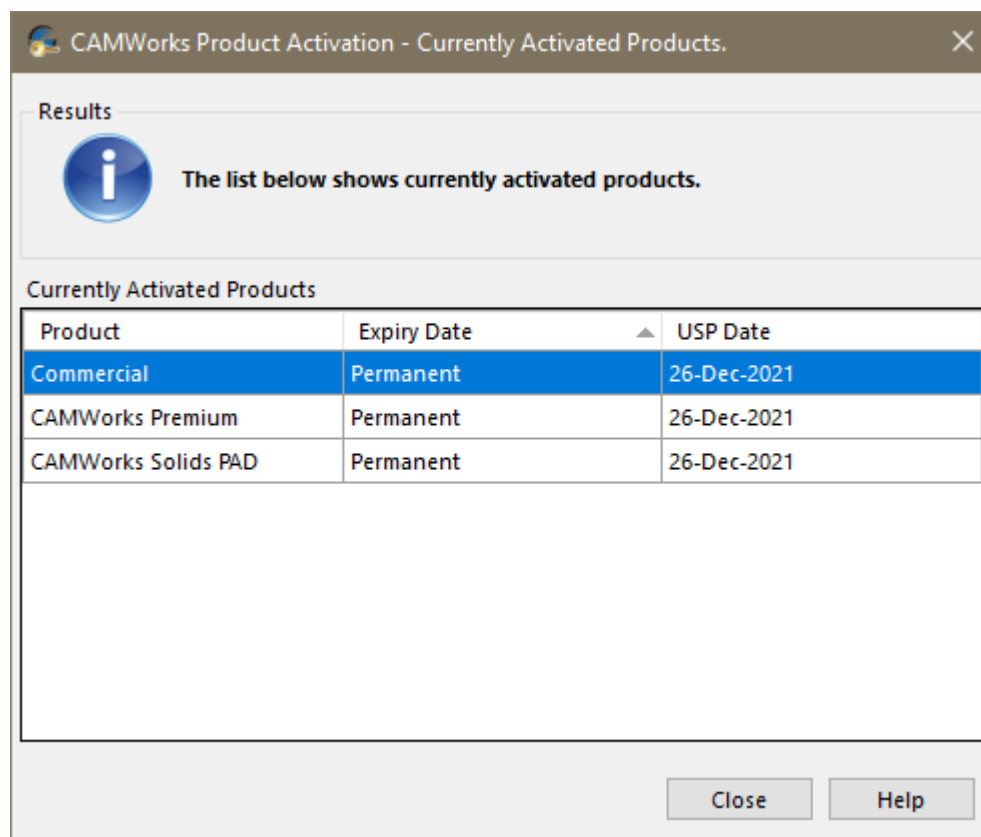
If you have received the response file, load it by clicking the Open button and then proceed with the below option. To discontinue, click Close. You can rerun the Wizard later.

Help Activate My Product(s) Close

After receiving the response file, assign Settings as indicated above in the CAMWorks Product Activation - Manual Method Wizard

- xix. Click on the **Open...** button in this wizard to browse and select this *CAMWorks Response* file.
- xx. Once this file is selected, click on the **Activate My Products...** button at the bottom of the wizard.
- xxi. If successfully activated, the *CAMWorks Activation – Currently Activated Products* dialog box listing all the activated products will be displayed. This user interface will list each activated CAMWorks product, the expiry date of the product and the expiry date of its [User Subscription Plan \(USP\)](#) in tabular format.





**CAMWorks Product Activation – Currently Activated Products Dialog Box**

- xxii. Click on the *Close* button to close this user interface.
  - xxiii. The user interface will now revert to the *License Setup* tab. Close the *CAMWorks License Manager* dialog box.
- Your *CAMWorks* license is now successfully activated. You can now commence using the *CAMWorks* application.



## 6. RENEWING/UPGRADING A NODELOCKED LICENSE USING MANUAL METHOD

You need to reactivate your CAMWorks license when your license or [User Subscription Plan](#) expires or when you upgrade your license to include more CAMWorks modules.

Given in this chapter are the steps to reactivate a [Nodelocked License](#) using the [Manual option](#) of the [Online License Reactivation Method](#).

### Steps to Reactivate a Nodelocked License using Manual Method

1. [Launch the CAMWorks License Manager tool](#). The *CAMWorks License Manager* dialog box will be displayed.
2. Switch to the *License Setup* tab. Under this tab, ensure that *Nodelocked (Standalone)* option is selected as the *License Method*.
3. Two contextual tabs will now be displayed under the *License Setup* tab. Click on the contextual tab labelled *Online Activations (New!)* under the tab.
4. In the *Configure FlexLM License* group box under this tab, click on the *Reactivate Existing...* button.
5. The *CAMWorks Product Reactivation* dialog box will be displayed. Select the *Manually via Email* option.
6. The **Please select the Product(s) to be reactivated** list box will display all the CAMWorks products currently active on the machine. The license expiry date, [User Subscription Plan \(USP\) expiry date](#) and associated *Activation ID* for each product will also be displayed. In this list box, place a check against all the product entries whose licenses you wish to reactivate.
7. Place a check in the **'I have read the HCL Technologies Privacy Policy and agree to its terms and conditions'** check box.
8. Placing the check in this check box activates the **Reactivate My Products...** button at the bottom of the dialog box. Click on this button.
9. The *CAMWorks Product Reactivation - Manual Method Wizard* will be displayed. Provide your *Username* and *email ID* and click the *Save* button.
10. The license manager mechanism will then generate a request file (in zip format) containing the *Activation ID(s)* to be reactivated. After successful generation of this file, a modal window with a message indicating successful generation of the request file will be displayed. This modal window will also indicate the file path to the location on the drive where the Request file (in zip format) has been saved. Once you click the *OK* button in this modal



## License Activation Using Online Activation Method

---

window, it will close, and the user interface will revert to the *CAMWorks Product Reactivation - Manual Method Wizard*.

11. Email this generated Request file to [register@camworks.com](mailto:register@camworks.com).
12. You will receive a *CAMWorks Response File (\*.cwlic)* file via email within maximum one business day. Save this file on the machine on which you intend to reactivate the license.
13. Click on the *Reactivate My Products...* command button in the *CAMWorks Product Reactivation* dialog box again to invoke the *CAMWorks Product Reactivation - Manual Method Wizard*.
14. Click on the *Open...* button in this wizard to browse and select this CAMWorks Response file.
15. Once this file is selected, click on the *Reactivate My Products...* button at the bottom of the wizard.
16. If your products are successfully reactivated, then the modal window labelled *Reactivation Success* that lists all the activated products will be displayed. Click on the *OK* button within this modal window to revert to the *CAMWorks Product Reactivation - Manual Method Wizard*.
17. Click on the *Close* button within this wizard to revert to the *CAMWorks Product Reactivation* dialog box.
18. Click on the *Close* button within this dialog box to revert to the *License Setup* tab of the *CAMWorks License Manager* dialog box.
19. Close the *CAMWorks License Manager* dialog box.

The products that were selected for reactivating are now successfully activated. You can now commence using those products.



## 7. TRANSFERRING NODELOCKED LICENSE USING MANUAL METHOD

The need to transfer your active *CAMWorks* license from one machine to another usually comes up when you upgrade your hardware or Windows systems.

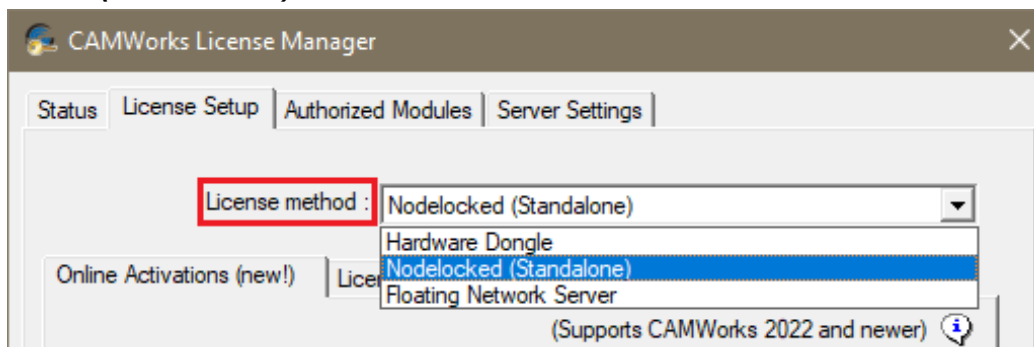
The *Online Deactivation/Activation* options provided within the [CAMWorks License Manager](#) tool allow you to deactivate your active *CAMWorks Nodelocked* license on your current Windows system and then transfer and activate that license on another Windows system.

This chapter covers the [Manual Method of License Deactivation](#). This topic covers all the steps involved in transferring your *CAMWorks* Nodelocked license from one system to another using *Manual Method of Online Deactivation/Activation*.

### Manual Method of License Deactivation and Activation

Given below are the steps involved in transferring your *CAMWorks* Nodelocked license from one system to another using *Manual Method of Online Deactivation/Activation*.

- i. [Launch the CAMWorks License Manager tool](#). The *CAMWorks License Manager* dialog box will be displayed.
- ii. Click on the *License Setup* tab of this dialog box. Under this tab, ensure that **Nodelocked (Standalone)** is selected as the **License Method**.

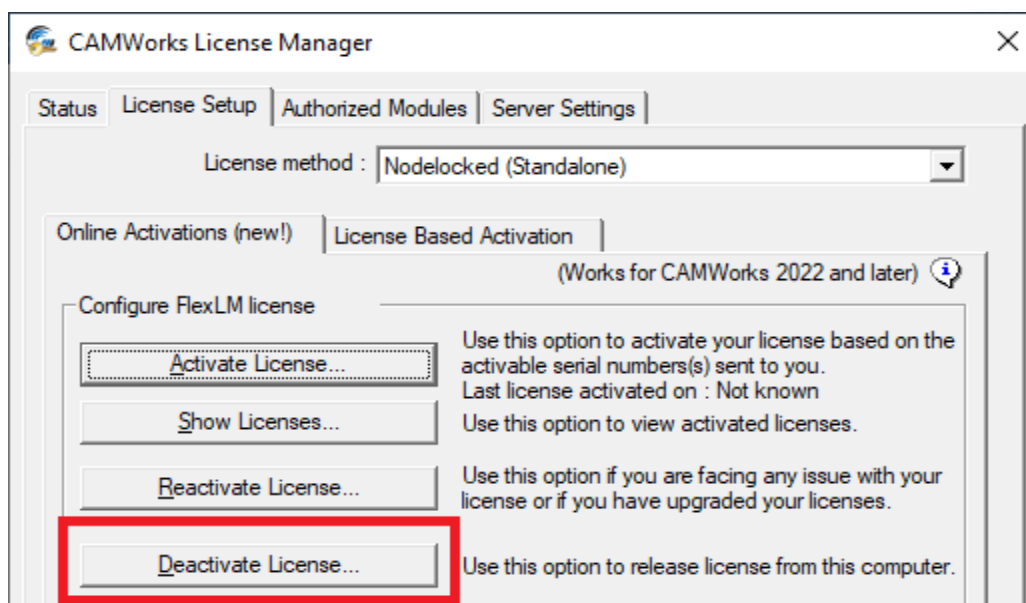


Select 'Nodelocked (Standalone)' option for License Method

- iii. Selecting the **Nodelocked (Standalone)** option displays two contextual tabs under the *License Setup* tab. Click on the **Online Activations (New!)** tab under the *License Setup* tab.
- iv. In the **Configure FlexLM License** group box under this contextual tab, click on the **Deactivate License...** button.

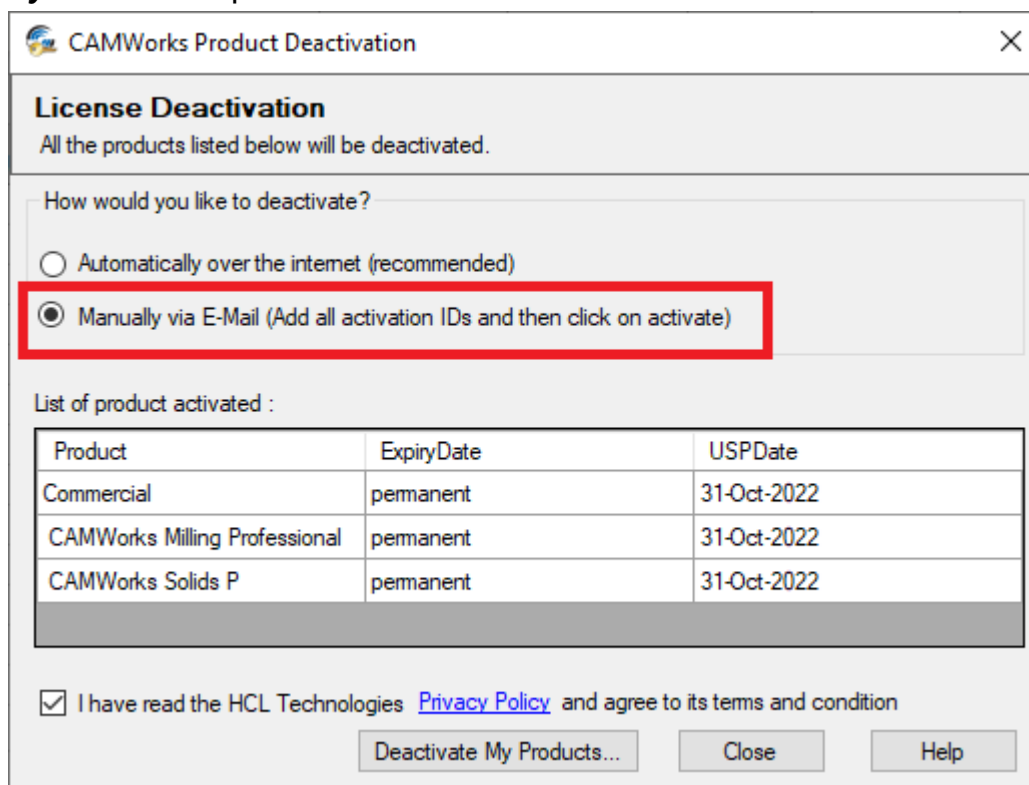


## License Activation Using Online Activation Method



Click on 'Deactivate License...' button under Online Activations Page of License Setup Tab

- v. The **CAMWorks Product Deactivation** dialog box will be displayed. Select the **Manually via E-Mail** option.



**CAMWorks Product Deactivation Dialog Box**



- vi. The **List of Product(s) Activated** list box will display all the CAMWorks products currently active on the machine. The license expiry date and [User Subscription Plan \(USP\) expiry date](#) of each product will also be displayed.
- vii. Place a check in the **I have read the HCL Technologies Privacy Policy and agree to its terms and conditions** check box.
- viii. Placing a check in this check box activates the **Deactivate My Products...** button at the bottom of the dialog box. Click on this button.
- ix. The *CAMWorks Product Deactivation - Manual Method Wizard* will be displayed.
- x. Provide your **Username** and **Email-ID** and click the **Save** button.

The screenshot shows a dialog box titled "CAMWorks Product Deactivation". It contains three main sections:

- 1) Activation ID(s) which needs to be deactivated**: A text box containing a placeholder "xxxx-xxxx-xxxx-xxxx-xxxx-xxxx-xxxx-xxxx".
- 2) Press save to create a request file**: Fields for "Username\*" (placeholder "xxxxx xxxxx") and "Email-ID\*" (placeholder "xxxxxx@xxx.com"), followed by a "Save..." button.
- 3) Email the request to the following address to get a response file :** The address "GT-Register@camworks.com" is listed. To the right, separated by "OR", is the option "Upload File on self service portal. ( Login is required )" with a link "Click here to open portal in a web browser".

### CAMWorks Product Deactivation – Manual Method Wizard

- xi. A modal window prompting you to confirm whether you are sure about deactivating the license will be displayed. Click the **OK** button within this modal window.

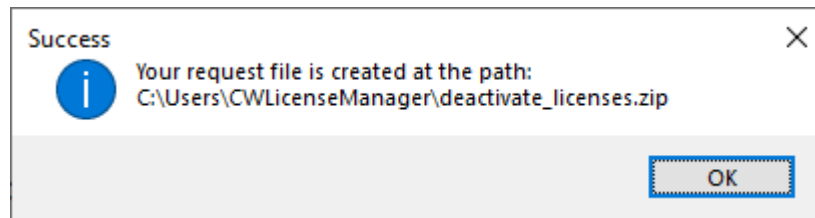
The screenshot shows a modal window with the title "Are you sure you want to deactivate existing license?". It features a question mark icon and the text "Are you sure you want to deactivate existing license? CAMWorks will not work once deactivation is done." At the bottom, there are "OK" and "Cancel" buttons.

### Modal Window Prompting Confirmation for Deactivating CAMWorks License



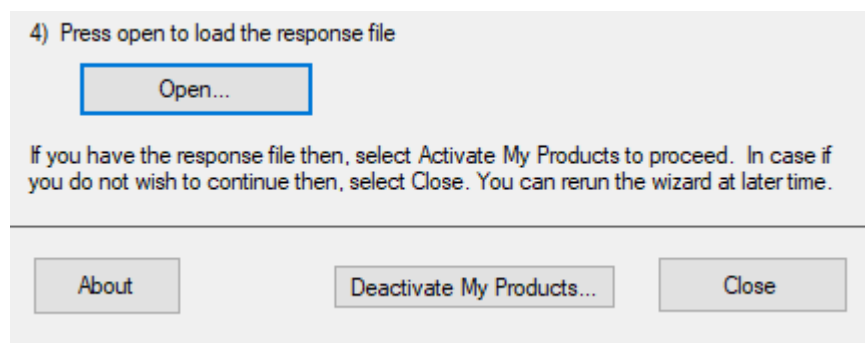
## License Activation Using Online Activation Method

- xii. Once you click the OK button of this modal window, the license manager mechanism will generate a request file (in zip format) containing the Activation ID(s) to be deactivated. After successful generation of this file, a modal window indicating successful generation of the request file for deactivating the license will be displayed.



Modal Window indicating successful generation of Request File

- xiii. Click the OK button within this modal window to close it and revert to the previous user interface.
- xiv. Email this license request file to [Register@camworks.com](mailto:Register@camworks.com).
- xv. You will receive a **CAMWorks Response File (\*.cwlic)** file via email within maximum one business day. Save this file on the machine on which you intend to deactivate the license.
- xvi. [Launch the CAMWorks License Manager tool](#) once again and navigate to its *License Setup* tab. Click on the **Deactivate License...** button in the **Online Activations (New!)** contextual tab under this tab.
- xvii. The **CAMWorks Product Deactivation** dialog box will be displayed. Click on the **Deactivate My Products...** command button in this dialog box again to invoke the **CAMWorks Product Deactivation - Manual Method Wizard**.
- xviii. Click on the **Open...** button in this wizard to browse and select this *Response* file.



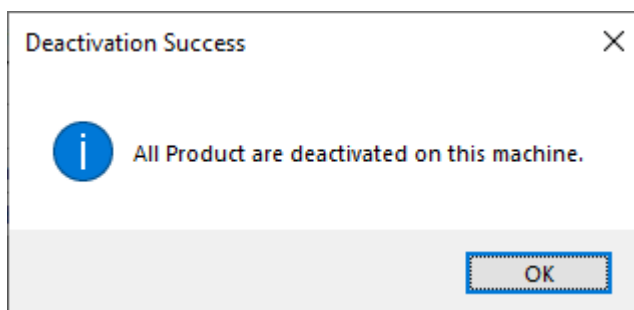
Click 'Open' button to load the Response File and Deactivate the License

- xix. Once this file is selected, click on the **Deactivate My Products...** button at the bottom of the wizard.





- xx. Once successfully deactivated, the **Deactivation Success** modal window will be displayed. Click on the OK button of this modal window to close it.



**Deactivation Success Modal Window**

- xxi. The user interface will revert to the *CAMWorks Product Deactivation - Manual Method Wizard*. Click on the Close button within this wizard.
- xxii. The user interface will now revert to the *CAMWorks Product Deactivation* dialog box. Click on the Close button within this dialog box.
- xxiii. The user interface will revert to the *License Setup* tab. Close the *CAMWorks License Manager* dialog box.

Your *CAMWorks* license is now successfully deactivated. You can now transfer the license to another machine of your choice by activating the license on that machine. This activation can be done [automatically or manually using the Online Activation Method](#). The steps involved are identical to activating a fresh Nodelocked license.

Based on whether a live Internet connection is available or not on the new system on which you intend to activate the license, refer the following topics of this document:

- [Activating a Nodelocked License using Automatic Method](#) in [Chapter 2](#)
- [Activating a Nodelocked License using Manual Method](#) in [Chapter 5](#)



## **APPENDIX A: CAMWORKS LICENSING INFORMATION**

Given in this chapter are all relevant details you need to know about *CAMWorks* licensing before you proceed with activating, renewing, or upgrading the license.

### **Types of CAMWorks License**

Based on single-user or multi-user requirements, the CAMWorks license can be activated either as a Nodelocked license (for single-user installation) or as a Floating Network Server License (for multi-user installation).

#### **The Standalone (Nodelocked) License**

A standalone license (node locked) authorizes the use of *CAMWorks* on a single Windows system.

For details on how to activate a single-user (Nodelocked) license using the [Online License Activation Method](#), refer the following topics in this document:

- [Chapter 2: Activating a Nodelocked License Using Automatic Method](#)
- [Chapter 5: Activating a Nodelocked License Using Manual Method](#)

#### **The Floating Network Server License**

The *Floating Network Server* license is ideal in environments where multiple copies of *CAMWorks* are to be run simultaneously on multiple *CAMWorks client* computers. One computer on such a network needs to be designated as the *CAMWorks License Server*. This computer will be used to submit the license request, install, and run the *CAMWorks License Service* and activate the *Floating Network Server* license. (All these activities are done via the *CAMWorks License Manager* program.) Once the license is activated, it will function as the centralized system that provides licenses to client computers for running the *CAMWorks* application modules.

Floating Network Server licenses are supported for all Client-Server Setups where the client is connected to the *CAMWorks License Server* via a *Microsoft Computer Network* or *VPN (Virtual Private Network)*.

To learn all the steps involved in activating the *Floating Network Server* license, refer the following document that is present in the same folder as this current document:

***Floating\_Network\_Online\_License\_Management\_Guide.pdf.***



### License Duration of the CAMWorks License

The CAMWorks license can be either perpetual or time bound in nature.

#### CAMWorks License of Perpetual Nature

The *CAMWorks* license you purchase from your Reseller is usually perpetual in nature. This means that the license will never expire, and you can continue using the *CAMWorks* application forever. However, note that you need to purchase a separate [User Subscription Plan \(USP\)](#) in order to receive latest updates for *CAMWorks* and to receive technical support.

For more details on *User Subscription Plan*, read [Appendix B: User Subscription Plan](#) of this document.

#### CAMWorks License of Time-bound nature

In most cases, the *CAMWorks* license issued to you will be a time bound license. Such licenses are non-perpetual in nature and *CAMWorks* will not function after the expiry date of the license.

If you are running *CAMWorks* using a license which is time bound in nature, when fewer than 30 days remain for the license to expire, *CAMWorks* will display a message indicating the number of days left for the license to expire. If you want to renew your license, contact your *CAMWorks* Reseller. After renewing, you need to [reactivate your license](#).

For details on how to renew an expired [Nodelocked](#) license, refer:

- [Chapter 3: Renewing/ Upgrading a Nodelocked License using Automatic Method](#)
- [Chapter 6: Renewing/ Upgrading a Nodelocked License using Manual Method](#)

### CAMWorks License Modes

When you purchase a *CAMWorks* license, the mode in which it is intended to be run is also embedded in the license. *CAMWorks* is currently supplied in Commercial, Educational and Instructor license modes. When *CAMWorks* fails to detect a valid license, it will run in [Demonstration Mode](#).

#### Commercial Mode

The *Commercial* mode of the *CAMWorks* license is intended for commercial purposes. *CAMWorks* is fully functional in the *Commercial* mode.

#### Educational Mode

The *Educational* mode of the *CAMWorks* software license is intended for non-commercial, educational use only. The *Educational* license mode may not be resold or used for commercial purposes. In the *Educational* mode version, *CAMWorks* is fully functional except for these restrictions:



## License Activation Using Online Activation Method

---

- *CAMWorks* data saved in files using the *Educational* mode license cannot be restored in a *Commercial* license mode.
- Post processing is disabled.
- The software may not be resold or used for commercial purposes.

### Instructor Mode

The *Instructor* mode of the *CAMWorks* software license is intended for purchase by educational institutes and to be used by Instructors. In the *Instructor* mode version, *CAMWorks* is fully functional except for these restrictions:

- *CAMWorks* data saved in files using the *Instructor* mode license cannot be restored in a *Commercial* license version. However, *CAMWorks* data saved in files using a *Commercial* mode license can be run on *Instructor* mode license.
- The software may not be resold or used for commercial purposes.

### Demonstration Mode

*CAMWorks* will run in *Demonstration* mode in the following cases:

- If a valid license has not been activated after installing *CAMWorks*.
- If the *CAMWorks* license expires
- When a valid *CAMWorks* license purchased is not detected by the [CAMWorks License Manager tool](#)
- When the license for the specific [CAMWorks modules](#) is not available for use on a [Floating Network](#) (as all the available licenses are in use by other *client* computers).

### Limitations of the Demonstration Mode

In *Demonstration* mode, *CAMWorks* is fully functional except for these restrictions:

- *CAMWorks* data saved in files cannot be restored in a *Commercial* licensed version.
- Post processing will be disabled, and NC code cannot be generated.

### Demonstration Mode when CAMWorks is Run as an Add-In in CAMWorks Solids

If you run *CAMWorks* as an Add-In within the *CAMWorks Solids* application, then you have a *CAMWorks* license that is configured to run [CAMWorks modules](#) as well as the *CAMWorks Solids* application. Once your license expires, you will not be able to run the *CAMWorks Solids* application without a valid *CAMWorks* license. Consequently, you cannot run *CAMWorks* in *Demonstration* mode as that requires the *CAMWorks Solids* application to be up and running.



### CAMWorks Modules

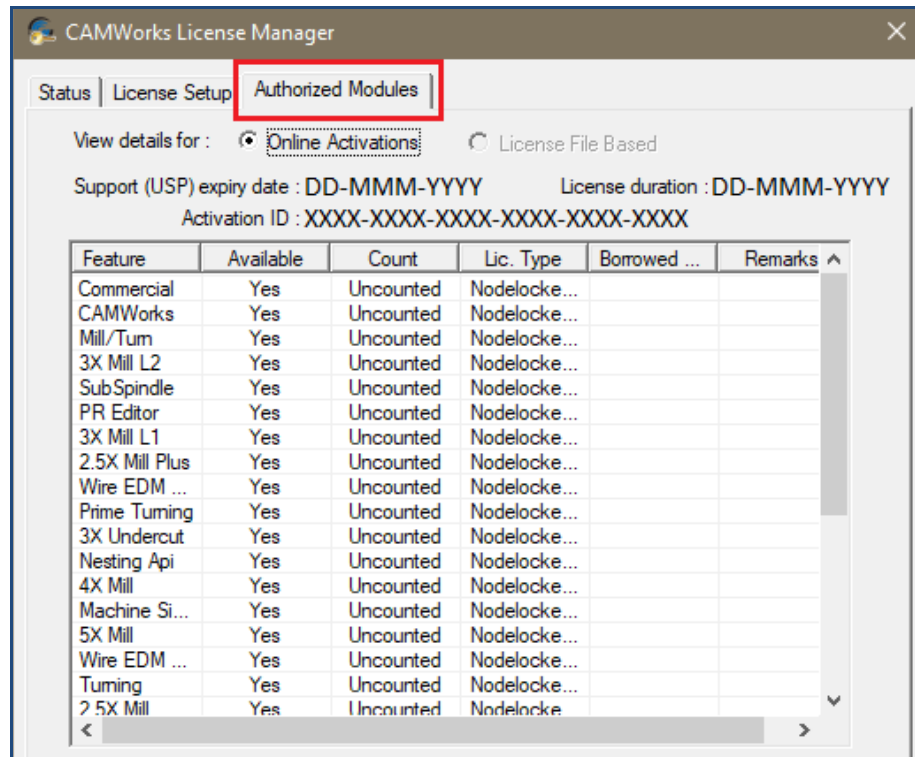
The CAMWorks application consists of numerous machining modules. Separate CAMWorks modules are available for 2½ Axis Milling, 3 Axis Milling, Rotary Milling, 3 Axis with Undercut, Wire EDM, Turning, Machine Simulation, etc.

You need to purchase the desired CAMWorks modules based on your machining requirements. When you purchase CAMWorks, you will be provided with a combination of CAMWorks modules tailored to meet your machining requirements.

### Viewing the CAMWorks Modules you are licensed to run

#### Viewing CAMWorks Modules in CAMWorks License Manager Dialog box

1. [Launch the CAMWorks License Manager tool](#) with Admin rights.
2. The CAMWorks License Manager dialog box will be displayed. Click on the *Authorized Modules* tab.
3. Observe that all the CAMWorks modules are listed in the [Feature](#) column of this tab.



Authorized Modules tab of CAMWorks License Manager Dialog Box

### Information Displayed in the Authorized Modules Tab

The following additional information is displayed under this tab:



### Support (USP) Expiry Date

The [expiry date](#) of your current [User Subscription Plan](#) is indicated in the top left corner of this tab in **DD-MMM-YYYY** format.

### Activation ID

The Activation IDs currently used for activating the license of the CAMWorks application are displayed in read-only format below the Support (USP) expiry date in this tab.

### License Duration

The expiry date of your license is indicated in the top right corner of this tab in **DD-MMM-YYYY** format. If you have a permanent license, then instead of an expiry date, the duration will be indicated as **Permanent**.

### Feature column

- The first row of the *Feature* column indicates the [mode of your CAMWorks license](#) (Commercial/ Educational/ etc.)
- The second row of the *Feature* column indicates the name of the software product purchased (*CAMWorks* in this instance).
- From third row onwards, all the *CAMWorks* modules you are licensed to run are listed.

### Available column

- **Yes** in the **Available** column indicates that the specific module is available for use.
- **No** in the **Available** column indicates that the specific module is not available.

### Count column

For a [Standalone \(Nodelocked\) license](#), the *Count* column will display **Uncounted** since only a single license for each module is available.

### Lic. Type column

For a [Standalone \(Nodelocked\) license](#), the *Lic. Type* column will indicate will display "Uncounted". This indicates that only one license of each module is available for use.



## **APPENDIX B: USER SUBSCRIPTION PLAN**

### **Enrolling for a User Subscription Plan**

When you purchase the *CAMWorks* license for the first time from a *CAMWorks* Reseller, you can opt to enroll you for a *User Subscription Plan* for a specific duration by paying an applicable fee.

### **Benefits of User Subscription Plan**

Being enrolled in the *CAMWorks User Subscription Plan* has the following benefits:

- ➔ **Receiving updates:** It allows you to keep your *CAMWorks* application up to date with the new features and performance improvements of *CAMWorks* released in the form of *CAMWorks* Releases and Service Packs.
- ➔ **Technical Support:** You will receive technical support for all issues with respect to *CAMWorks* and associated utilities.

Once your USP expires, you will no longer receive updates or support. Ensure that you repurchase an appropriate *User Subscription Plan* from your *CAMWorks* Reseller to continue receiving technical support and updates. This helps to keep your *CAMWorks* system up to date with new features and performance improvements.

---

#### **Note:**

**The *CAMWorks* license you purchase is usually perpetual in nature. However, the *User Subscription Plan (USP)* has a fixed duration. You need to repurchase a USP after your current plan expires.**

---

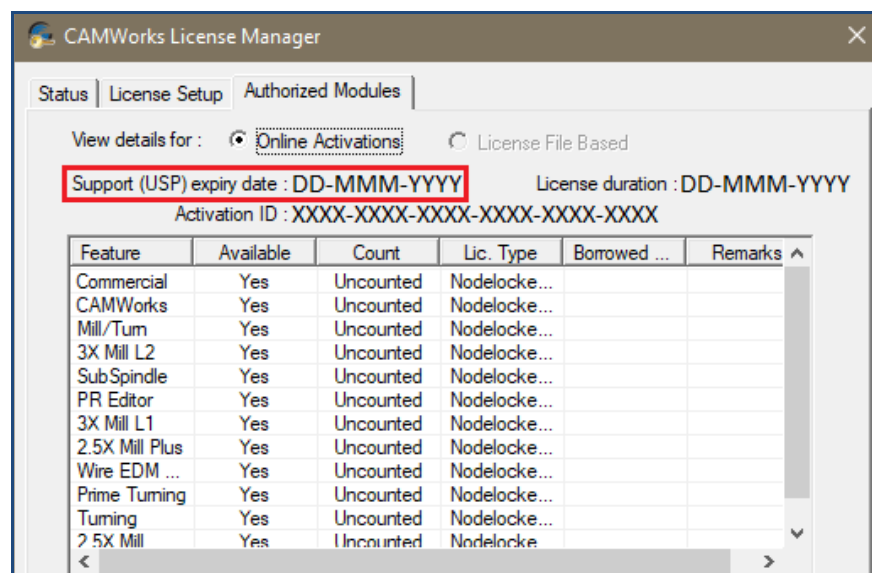
### **Viewing the Expiry Date of your User Subscription Plan**

You can verify the expiry date of your current *User Subscription Plan* using one of the following methods:

#### **Method 1: Viewing USP Expiry Date in CAMWorks License Manager**

1. Launch the ***CAMWorks License Manager*** tool on the client computer.  
(*Start menu>>Programs>>CAMWorks License Manager>>CW License Manager*)
2. Click on the ***Authorized Modules*** tab. The ***Support (USP) expiry date*** at the top left-hand side of this tab indicates the expiry date of the *User Subscription Plan* in YYYYMMDD format.

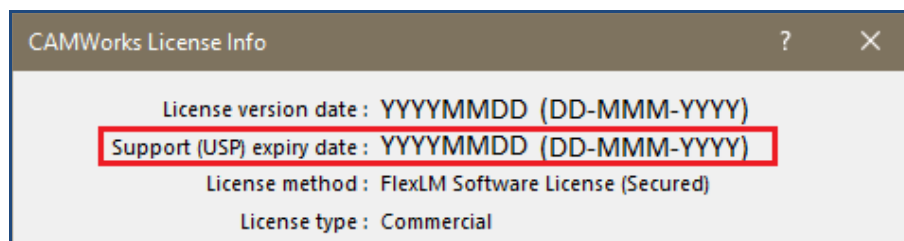




The Authorized Modules tab of the CAMWorks License Manager Dialog box

### Method 2: Viewing Expiry Date of USP in License Info dialog box

1. Launch CAMWorks as an Add-In within the SOLIDWORKS/ CAMWorks Solids environment.
2. Click on the **Help** menu and select **CAMWorks 2022>>License Info ...**. The CAMWorks License Info dialog box will be displayed. The **Support (USP) expiry date** at the top left of this dialog box indicates the expiry date of your User Subscription Plan.



'Support (USP) expiry date' in the License Info Dialog Box

### Significance of the Expiry Date of your User Subscription Plan

The *User Subscription Plan (USP)* that you purchase is for a fixed duration. After its expiry, you need to re-enroll for a fresh *User Subscription Plan*.

If you have an active USP, you can download and install the latest CAMWorks Releases and Service Packs. Hence, the expiry date of your *User Subscription Plan* assumes significance.

- If your *Support (USP) expiry date* is a date later than the current date, then it indicates that your *User Subscription Plan* is active.
- If the *Support (USP) expiry date* is a date prior to the current date, then it indicates that your *User Subscription Plan* has expired.



- You can install those CAMWorks versions which have a *License Version date* prior to or the same as the *Support (USP) expiry date*.
- When there are only 30 days or less remaining for your *User Subscription Plan* to expire, a **Reminder message** will be displayed when you load CAMWorks. This message indicates the number of days remaining for your *User Subscription Plan* to expire.
- In order to update an existing CAMWorks installation, you must currently be enrolled in a *CAMWorks User Subscription Plan*. If your *User Subscription Plan* has expired, you need to renew your *User Subscription Plan* and then reactivate your Activation IDs. For details on how to reactivate your Activation IDs for a Nodelocked license, refer [Chapter 3](#) and [Chapter 6](#) of this document.

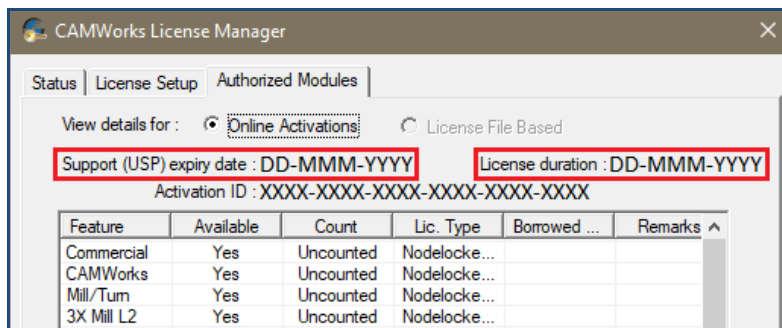
### License Duration

- The **License duration** field at the top right corner of the **Authorized Modules tab** in the *CAMWorks License Manager* dialog box indicates whether your CAMWorks license is perpetual or time-bound in nature.
- If your CAMWorks license is [perpetual](#) in nature, then the **License duration** will be displayed as '**Permanent**'.
- If your CAMWorks License is [time-bound](#) in nature, then the expiry date of your license will be displayed in the **License duration** field in **DD-MMM-YYYY** format.

#### Note:

- If your *User Subscription Plan* expires (indicated by the Support (USP) expiry date), you can still continue using the licensed module of CAMWorks till the expiry date of your license indicated by the License Duration date).
- If your CAMWorks license is perpetual in nature and your *User Subscription Plan* expires, then you can use the licensed modules of the currently installed CAMWorks version in perpetuity.

However, in both the above cases, you can no longer avail the benefits associated with the *User Subscription Plan* unless you renew the plan.



The Authorized Modules tab of the CAMWorks License Manager Dialog Box



## **APPENDIX C: CHECKING THE LICENSE VERSION DATE**

### **License Version Date of CAMWorks Version and its Significance**

Geometric Americas, Inc. periodically releases new CAMWorks versions in the form of Service Packs. Every CAMWorks version released has a *License Version Date* associated with it. This *License Version Date* indicates whether you are eligible to use the newly released CAMWorks version or not.

- If the *License Version Date* associated with a CAMWorks version is lower than the expiry date of the [User Subscription Plan](#) (USP) associated with your CAMWorks license, then you are eligible to run and use the CAMWorks application. (To view the [expiry date](#) of your *User Subscription Plan*, refer the topic: [Viewing the Expiry Date of your User Subscription Plan](#) in [Appendix B](#) of this document.)
- If the *License Version Date* associated with a CAMWorks version is higher than the expiry date of the [User Subscription Plan](#) (USP) associated with your CAMWorks license, then you are not eligible to run the CAMWorks application. You may download and install the CAMWorks version but won't be able to run CAMWorks unless a license with a renewed [User Subscription Plan](#) (USP) is activated.

### **Illustrative Example to indicate eligibility to run a CAMWorks version based on License Version Date:**

If the *License Version Date* of the new version of CAMWorks is *October 15, 2021 [20211015]* and the *Support (USP) expiry date* of the CAMWorks license is *January 15, 2022 [20220115]*, then you are eligible to install and run the new version as the *License version date* is a date prior to the USP expiry date.

### **Viewing the License Version Date associated with a CAMWorks Version**

You can view the *License Version Date* associated with the CAMWorks version currently loaded as Add-In within SOLIDWORKS /CAMWorks Solids using one of the following methods:

#### **Viewing License Version Date in CAMWorks ReadMe File**

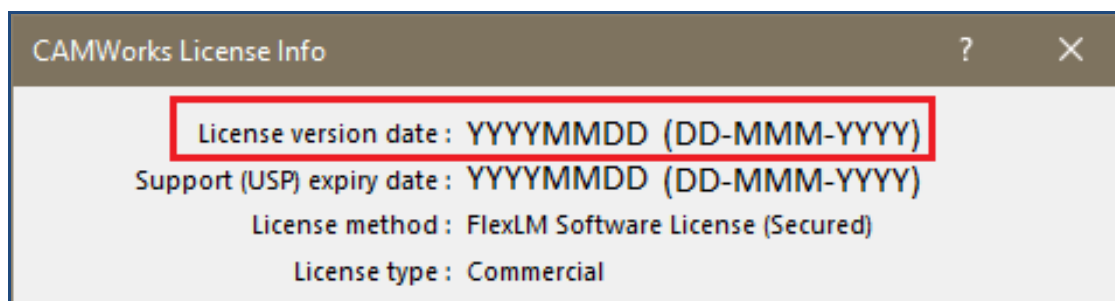
The *License Version date* of a CAMWorks version is mentioned in the *ReadMe* file. The *ReadMe* file for the version installed on your system can be accessed by selecting:

**<Drive>:\Program Files \CAMWorks2022x64 \CAMWorks\_VC142\Lang\English\Manuals\ ReadMe**



### Viewing License Version Date in CAMWorks License Info Dialog Box

- i. Load CAMWorks as an Add-In within the SOLIDWORKS/CAMWorks Solids environment.
- ii. Click on the **Help** menu and select *CAMWorks 2022>>License Info ...*
- iii. The CAMWorks License Info dialog box will be displayed. The **License version date** is given at the top of this dialog box.



**'License Version date' in the License Info Dialog Box**