



WELCOME TO A NEW ERA IN 3D SCANNING

Your 3D scanning experience has never been this complete, this balanced, or this awesome.



WATCH PRODUCT VIDEO

Say hello to our new generation of professional-grade 3D scanners

peel 3

An affordable turnkey and professional-grade 3D scanning that packs a jaw-dropping punch. Get your 3D scanning job done right the first time.

Ideal for:

- Heritage preservation and art
- AR, VR and digital content
- Healthcare
- Education

peel 3.CAD

Reverse engineer like a boss. With peel 3.CAD, you can extract all the info you need and send it right to your fave CAD software.

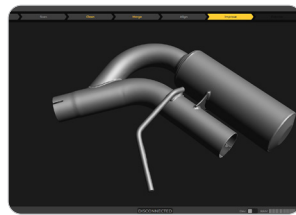
Ideal for:

- Aftermarket and tuning
- Product design
- MRO and engineering

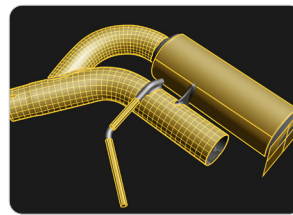
Look how easy it is!



1 Scan
the object



2 Finalize
mesh



3 Extract*
entities and surfaces

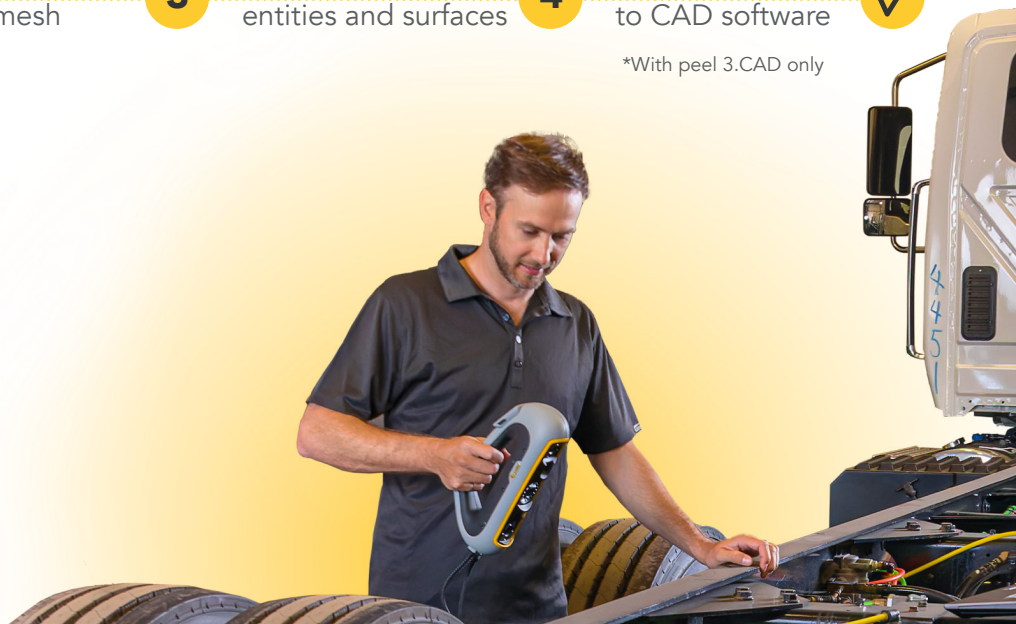


4 Transfer*
to CAD software



*With peel 3.CAD only

We've got a 3D scanning
solution for your industry



Use our software tools to create stunningly real 3D models in a snap!



Clean Up



Fill



Align



Smooth



Decimate



Merge

Technical specifications

Explore the amazing performance levels of peel 3. This professional 3D scanner is really in a class by itself.

Software	peel.OS, peel.CAD*
Recommended object size	0.1 - 3.0 m (0.3–10 ft)
Accuracy	0.250 mm/m, up to 0.1 mm (0.01 in/ft, up to 0.004 in)
Measurement capabilities	
pin - 1.5 mm (0.059 in)	hole - 3.0 mm (0.118 in)
step - 0.1 mm (0.0039 in)	wall - 1.0 mm (0.039 in)
Mesh resolution	0.250 mm (0.01 in)
Scanning area	340 x 475 mm (13.39 x 18.7 in)
Scan speed	80 sec/m ² (7.4 sec/ft ²)
Usage distance (from object)	250 to 550 mm (9.8 to 21.7 in)
Depth of field	300 mm (11.8 in)
Projector light source	IR VCSEL
Scanner controls	Touchscreen
Color resolution (on object)	50 to 200 DPI
Positioning methods	Geometry and/or targets and/or texture
Measurement rate	1,250,000 measurements/s
Dimensions	304 x 150 x 79 mm (12 x 5.9 x 3.2 in)
Weight	950 g (2.1 lb)
Connectivity	USB 3.0
Output formats (peel 3)	.dae, .fbx, .ma, .obj, .ply, .stl, .txt, .wrl, .x3d, .x3dz, .zpr, .dxf, .iges*, .step*

*With peel 3.CAD only

Interested in learning more about peel 3d's new generation of 3D scanners powered by Creaform, the industry leader in 3D scanning technologies?

Hit us up!



CREAFORM / AMETEK

Creaform Inc. (Head Office)
4700 rue de la Pascaline
Lévis QC G6W 0L9 Canada
T.: 1-855-WOW-PEEL | F.: 1 418 833 9588
peel-3d.com



www.goengineer.com

FOR MORE INFORMATION

info@goengineer.com | 800.688.3234