



SOLIDWORKS PDM – Clear Local Cache Behavior

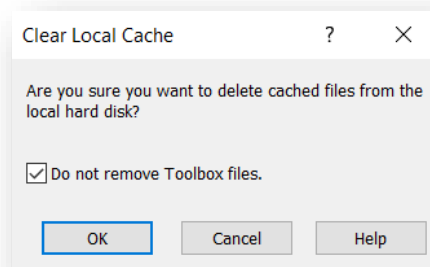
Clearing local cache is an essential tool to keep disk space usage low. In some events, clearing local cache does not actually clear anything. In fact, clearing local cache in some scenarios would be problematic and therefore mechanisms within PDM do not proceed to clearing cache by design.

This document brings awareness of this behavior through a list so that end-users and Administrators know what to expect when clearing local cache.

Clear local cache won't apply here

Here are the most common scenarios when Clear Local Cache does not apply by design.

- **File is checked out.**
 - If the file is checked out, it is assumed that you need it and the cache will not be cleared.
- **Parent file is checked out.**
 - If a parent file is checked out, i.e. an assembly and or drawing, then it is assumed that you will need the children.
- **File in use by another application.**
 - If a file is used by another application, even antivirus, the file will not be cleared.
- **File where "Read-only" attribute was changed manually**
 - If the file is writable, it will be assumed you need the file and won't be cleared.
- **Local Only files.**
 - Local only files are not part of the vault. These are typically denoted by a less-opaque thumbnail.
- **Private state files.**
 - Private state files are files that have never been checked into the vaulted, but are writable.
- **It's a toolbox part.**
 - If you have a vaulted toolbox, check/uncheck the box according to your needs.



- **Other file-specific issues**
 - Send us an email to support@goengineer.com